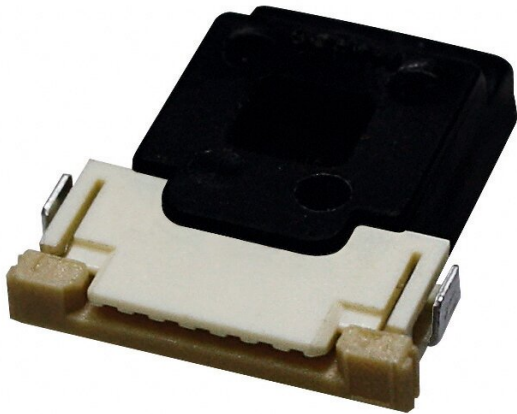


PRODUCT DATASHEET LF -2TERM FLEX

LINEARlight FLEX® Tunable White | – Flex accessories



Product benefits

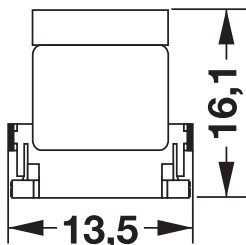
- Simple installation, no tools or soldering required (CONNECTsystem)
- Reduced installation time (CONNECTsystem)
- Low profile
- Extremely vibration-proof (CONNECTsystem)
- Robust connection
- Can be connected to the front of the module or at division points (CONNECTsystem)

Product features

- Quick and easy installation
- Compatible with Linearlight Flex
- Compatible with TEC Flex



TECHNICAL DATA

Dimensions & Weight



Length	16.2 mm
Width	14.5 mm
Height	5,5 mm
Product weight	7.00 g

DOWNLOAD DATA

DOWNLOAD DATA	
	PRODUCT DATASHEET
	Advertisements

LOGISTICAL DATA

Product code	Packaging unit (Pieces/Unit)	Dimensions (length x width x height)	Gross weight	Volume
4008321955357	BAG 10	100 mm x 14 mm x 58 mm	73.00 g	0.08 dm ³
4008321955500	Shipping box 200	237 mm x 62 mm x 166 mm	1519.00 g	2.44 dm ³
20046135714287	Shipping box 2,000			
4008321514615	Shipping box 2,000			

The mentioned product code describes the smallest quantity unit which can be ordered. One shipping unit can contain one or more single products. When placing an order, for the quantity please enter single or multiples of a shipping unit.

DISCLAIMER

Subject to change without notice. Errors and omission excepted. Always make sure to use the most recent release.

