

Data sheet

Commercial Art.No.: Z5.530.1525.0

PCB pin header 8142... /15 D1.3/1.0

PCB pin header, 15 poles, pitch: 5 mm, type of packing: carton, color: grey



Certificates / Approvals



Technical data

General

Modular spacing	5 mm
Soldering process	Wave soldering
Packaging	Carton
Number of poles	15
Number of levels	1
Marking	No
Fastening	None
Mating direction towards (circuit) board	90°

Technical data

Rated current	8 A
Overvoltage Category I	1000 V
Overvoltage Category II	250 V
Overvoltage Category III	200
Rated impulse voltage	4 kV

Technical Data UL/CSA

Voltage UL	300 V
Current field wiring	15 A
Current factory wiring	15 A
Voltage CSA	300 V
Current CSA	15 A

Other

Type of insulation material	Thermoplastic
Color	Grey
Height	12 mm
Length	75 mm
Depth	2.8 mm

Material contact base	CuZn
Material contact surface	Sn

Classification

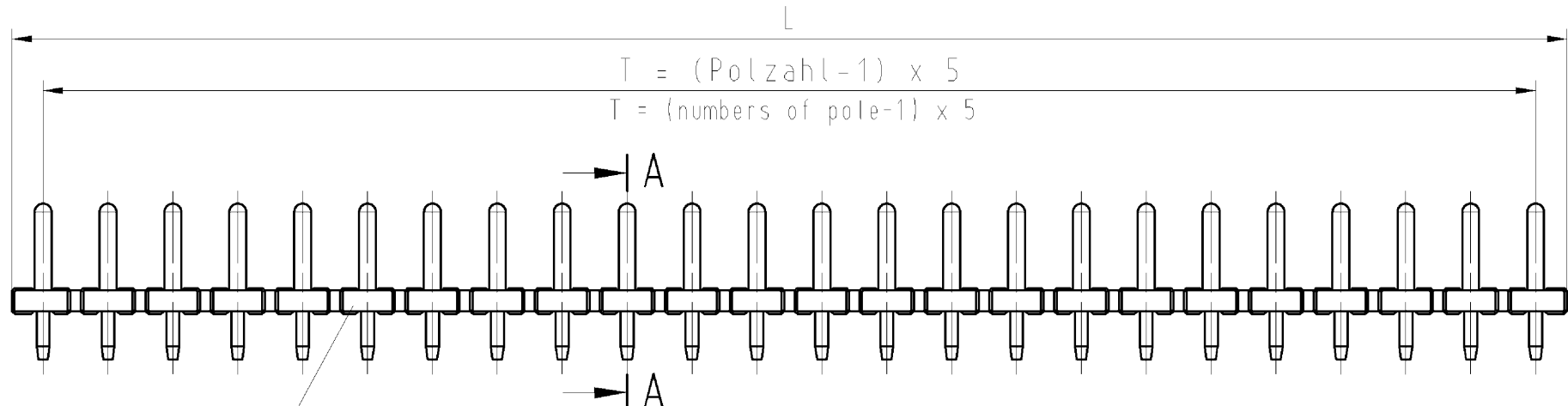
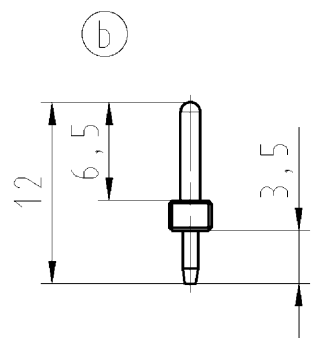
ECLASS 11	
ECLASS 8.1	27440402
ETIM 7.0	EC002637
ETIM 6.0	EC002637
ETIM 5.0	EC002637
ETIM 4.0	EC002637

Product compliance

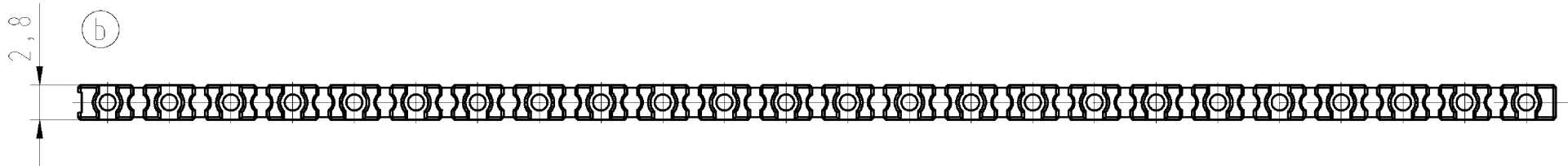
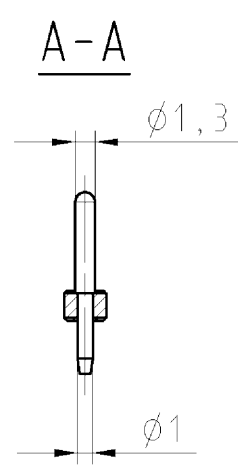
ROHS conformity status	Compliant/Exempted
ROHS exceptions	III-6(c)
REACH-SVHC conformity status	Duty-To-Declare
REACH-SVHC substances	Lead
REACH-SVHC CAS numbers	7439-92-1

These dimensions will be especially checked at delivery
 Only inspection dimensions
 With /E marked dimensions are only valid for internal use

Diese Maße werden bei Abnahme besonders geprüft
 Ausschließlich Prüfmaße
 Mit /E gekennzeichnete Maße sind nur für interne Zwecke gültig



Farbe: grau
 colour: grey



.X	Oberfläche Kontaktstifte surface contact pin
.0	Zinn / tin
.8	Silber / silver

Z5.530.2425.X	24	23x5=115	119,8
Z5.530.2325.X	23	22x5=110	114,8
Z5.530.2225.X	22	21x5=105	109,8
Z5.530.2125.X	21	20x5=100	104,8
Z5.530.2025.X	20	19x5= 95	99,8
Z5.530.1925.X	19	18x5= 90	94,8
Z5.530.1825.X	18	17x5= 85	89,8
Z5.530.1725.X	17	16x5= 80	84,8
Z5.530.1625.X	16	15x5= 75	79,8
Z5.530.1525.X	15	14x5= 70	74,8
Z5.530.1425.X	14	13x5= 65	69,8
Z5.530.1325.X	13	12x5= 60	64,8
Z5.530.1225.X	12	11x5= 55	59,8
Z5.530.1125.X	11	10x5= 50	54,8
Z5.530.1025.X	10	9x5= 45	49,8
Z5.530.0925.X	9	8x5= 40	44,8
Z5.530.0825.X	8	7x5= 35	39,8
Z5.530.0725.X	7	6x5= 30	34,8
Z5.530.0625.X	6	5x5= 25	29,8
Z5.530.0525.X	5	4x5= 20	24,8
Z5.530.0425.X	4	3x5= 15	19,8
Z5.530.0325.X	3	2x5= 10	14,8
Z5.530.0225.X	2	1x5= 5	9,8
Teile - Nr. part - no.	Polzahl pole	T	L

Gezeichnete Ausführung/drawn version: Z5.530.2425.0

Weitere Daten siehe Katalog
 further data see catalog

Tolerierung Size ISO 14405/Tolerance system Size ISO 14405. (This ISO-standard describes the envelope principle. According to the envelope principle the deviations of form and parallelism are limited by the size tolerances).				ja/yes <input checked="" type="checkbox"/> Stoffverbots- und Deklarationsliste nach UU-TOM-05/03 ist einzuhalten. Conformity with Wieland document UU-TOM-05/03 (list of prohibited / declarable hazardous substances) to be declared!					
Freitoleranz nach General tolerance		DIN ISO 2768 - m		CAD - Zeichnung, keine manuellen Änderungen CAD - drawing, no manual modifications allowed		1. Verwendung: First Use:		Blatt: 1 von 1 Sheet: of 1	
		Werkstoff/Material		2008 Tag/Date		Name		Zeichnung Nr./Drawing No.	
		Maßstab/Scale		gezeichnet drawn		18.06.		Dvetsch T.	
		2:1		geprüft checked				T Z5.530.0225.0 01K b	
		Vol. mm³		Ofl./Surf. mm²		Ersatz für/Replacement for: -		Index	
b 16.10.2012/		wieland		Type		Benennung/Tittle		PCB PIN STRIP HEADER LP_STIFTLISTE	
a 07.03.2011/		Elektrische Verbindungen						für/for 8142 2 - 24 polig/poles	
Index Datum / Blatt Date / Sheet		Änderung/Revision							

Weitergabe sowie Vervielfältigung dieses Dokuments, Verwertung und Mitteilung seines Inhalts sind verboten, soweit nicht ausdrücklich gestattet.
 The reproduction, distribution and utilization of this document as well as the communication of its contents to others without express authorization is prohibited.

Z55300225001K_2 CADW2037.dwg 2012-10-16 11:28:26 1:000