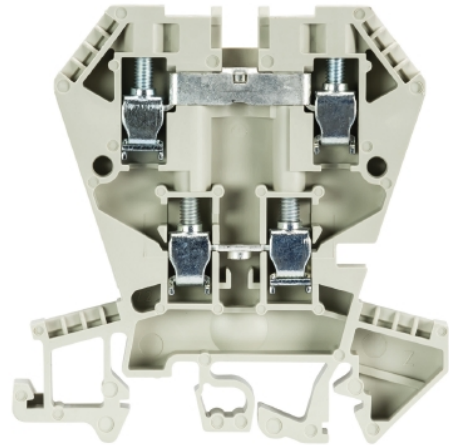


Data sheet

Commercial Art.No.: 57.404.7055.0

Multi-tier terminal WK 4E/U /V0

Multi-tier terminal block with screw connection for mounting on TS 35 and TS 32, nominal cross section 4 mm², width 6 mm, color gray



Certificates / Approvals



CAN-EX



ATEX



USA-EX

Technical data

General

Nominal cross section	4 mm ²
Color	Grey
Number of levels	2
Number of clamp positions per level	2
Width/grid dimension	6 mm
Insulating housing	PA666
Inflammability class of insulation material acc. with UL94	V0
Explosion-tested version "Ex e"	No
Mounting method	DIN rail (top hat rail)/G-rail
Terminal blocks for electrical installations	No

Technical data

Rated current	32 A
Rated voltage	400 V
Rated impulse voltage	6 kV
Pollution degree	3
Closing plate required	Yes
Type of insulation material	Thermoplastic
Length	61.6 mm

Connection Data

Connection type 1	Screw connection
Connection type 2	Screw connection
Minimum cross section solid	0.5 mm ²
Maximum cross section solid	4 mm ²

Minimum cross section fine stranded	0.5 mm ²
Maximum cross section fine stranded	4 mm ²
Wire strip length	9 mm
Torque conductor mounting	0.5 Nm

Technical Data UL/CSA

Cross section UL	22-10 AWG
Voltage UL	300 V
Current factory wiring	20 A
Current field wiring	20 A
Cross section CSA	20-12 AWG
Voltage CSA	300 V
Current CSA	10 A

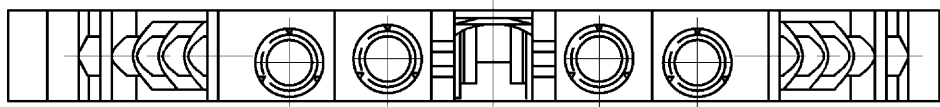
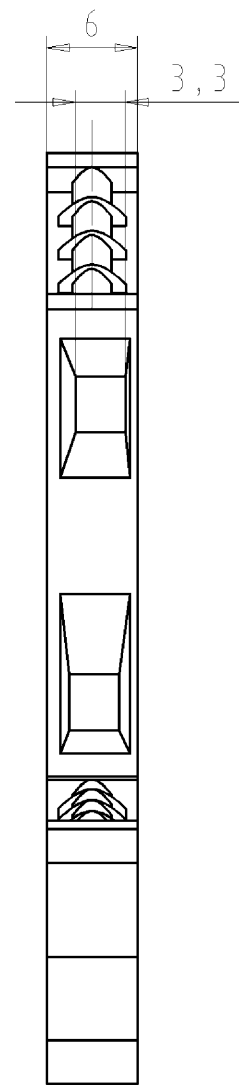
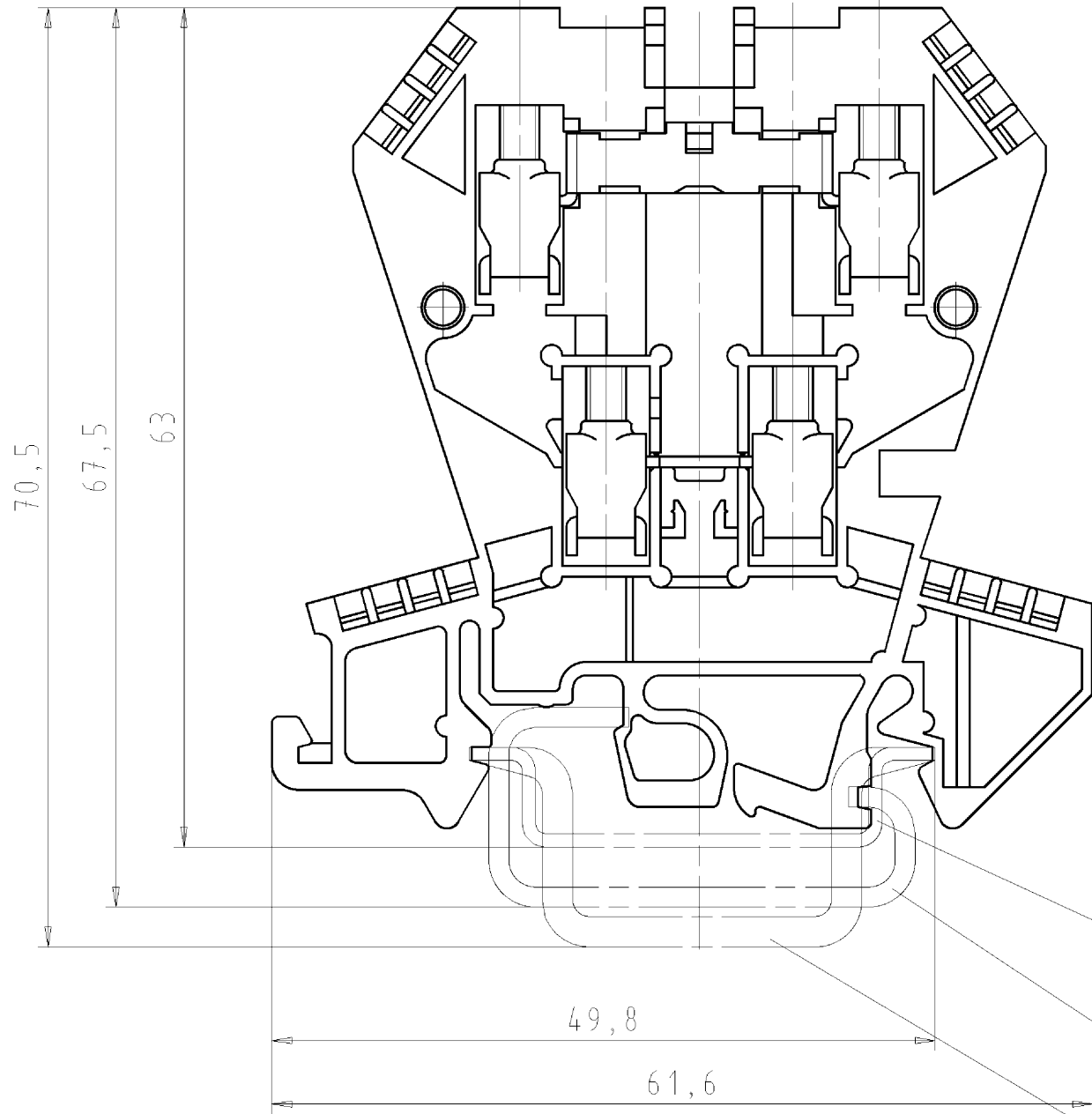
Classification

ECLASS 11	
ECLASS 8.1	27141120
ETIM 7.0	EC000897
ETIM 6.0	EC000897
ETIM 5.0	EC000897
ETIM 4.0	EC000897
ETIM 3.0	EC000897

These dimensions will be especially checked at delivery
Only inspection dimensions
With /E marked dimensions are only valid for internal use

Diese Maße werden bei Abnahme besonders geprüft
Ausschließlich Prüfmaße
Mit /E gekennzeichnete Maße sind nur für interne Zwecke gültig

○



- Hutschiene EN 60715-35x7,5
mounting rail EN 60715-35x7,5
- G-Schiene EN 60715-G 32
g-rail EN 60715-G 32
- Hutschiene EN 60715-35x15
mounting rail EN 60715-35x15

ⓑ # = ohne Kennzeichnung der Ex-Zulassung/
without marking the Ex-approval

Teile.-Nr. part-no.	Farbe colour	Type type
57.404.7055.0	grau/grey	WK4 E/U /VO
57.404.7055.1	schwarz/black	WK4 E/U /VO SCHWARZ
ⓑ 57.404.7055.2 #	weiß/white	WK4 E/U /VO WEISS
57.404.7055.4 #	braun/brown	WK4 E/U /VO BRAUN
ⓐ 57.404.7055.5 #	rot/red	WK4 E/U /VO ROT
57.404.7055.6	blau/blue	WK4 E/U /VO BLAU
ⓑ 57.404.7055.7 #	grün/green	WK4 E/U /VO GRÜN
57.404.7055.8 #	gelb/yellow	WK4 E/U /VO GELB
57.404.7055.9 #	orange/orange	WK4 E/U /VO ORANGE

Tolerierung Size ISO 14405/ⓐ/ Tolerance system Size ISO 14405/ⓐ.
(This ISO-standard describes the envelope principle. According to the envelope principle the deviations of form and parallelism are limited by the size tolerances).

ja/yes Stoffverbots- und Deklarationsliste nach UU-TOM-05/03 ist einzuhalten.
Conformity with Wieland document UU-TOM-05/03 (list of prohibited / declarable hazardous substances) to be declared!

Freitoleranz nach DIN ISO 2768 - m CAD - Zeichnung, keine manuellen Änderungen
General tolerance CAD - drawing, no manual modifications allowed

1. Verwendung: - Blatt: 1 von 1
First Use: Sheet: of

Werkstoff/Material	2003 Tag/Date	Name	Zeichnung Nr./Drawing No.	Index
Maßstab/Scale	gezeichnet/drawn	Schmitt		
2:1	geprüft/checked	-	T	57.404.7055.0 01K b
	Normgepr. / Stand. check	-		
Maße in mm/Dimensions are in mm				
Ersatz für/Replacement for: -				
b 29.01.2013/	wieland		Type	Benennung/Tittle
a 09.11.2006/	Elektrische Verbindungen		WK 4	ETAGENKLEMME
Index Datum / Blatt Date / Sheet			E/U	modular double-deck terminal
Änderung/Revision				

Weitere Daten siehe Katalog
further data see catalog

Weitergabe sowie Vervielfältigung dieses Dokuments, Verwertung und Mitteilung seines Inhalts sind verboten, soweit nicht ausdrücklich gestattet.
The reproduction, distribution and utilization of this document as well as the communication of its contents to others without express authorization is prohibited.

574047055001K_2 CADW3028_Treschan 2013-01-30T10:24:53 1.000