

Data sheet

RP034xxHBLO Typ 113

Page 1/4

P/N
311131xx

xx=number of poles

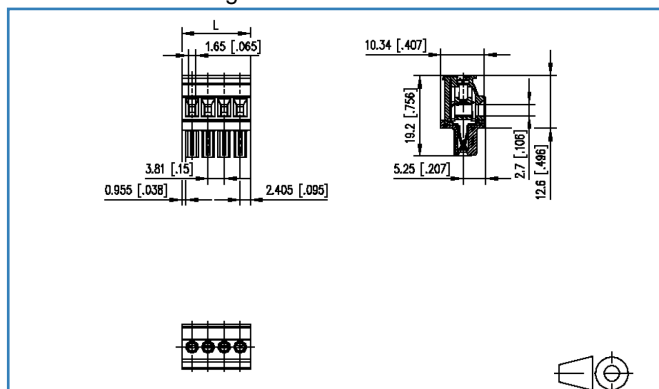
11/07/2018

Version: N

Illustrations



Dimensional drawing



See enlarged drawings at the end of document

Product specification

- screw type terminal block, pluggable
- centerline 3.81 mm, direction of connection 90°
- lift system
- color black
- wire entry codeable side perpendicular to plug direction



Data sheet RP034xxHBLO Typ 113

Page 2/4

P/N
311131xx

xx=number of poles

11/07/2018

Version: N

Technical Data

General Data


Tightening torque SEV	0.25 Nm		
Tightening torque UL	3 lb-in		
min. number of poles	2		
max. number of poles	21		
Insulating material class	CTI 600		
clearance/creepage dist.	2.9 mm		
Min. insul. strip length	7 mm		
Overvoltage category	III	III	II
Pollution degree	3	2	2
Rated voltage	40 V	250 V	250 V
Rated test voltage	1.5 kV	1.5 kV	1.5 kV


Connection Data

rat.wiring solid AWGmax	0.08 mm ² - 2 mm ² / AWG 28 - AWG 14		
rat.wiring strand.AWGmax	0.08 mm ² - 1.5 mm ² / AWG 28 - AWG 16		

Approvals

extended wiring UL	Wire range extended to 14 AWG solid only.		
--------------------	---	--	--

 V / A / 28	300 / 11 / 28 - 16		
--	--------------------	--	--

 1.5 mm ²	160 V / 1.5 kV / 9 A		
---	----------------------	--	--

Material

Glow-Wire Flammability GWFI	960 °C acc. to IEC 60695-2-12		
Glow-Wire Flammability GWIT	775 °C acc. to IEC 60695-2-13		
REACH - substance (SVHC)	Lead / 7439-92-1		

Climatic Data

upper limit temperature	105 °C		
lower limit temperature	-40 °C		

Data sheet RP034xxHBLO Typ 113

Page 3/4

P/N
311131xx

xx=number of poles

11/07/2018

Version: N

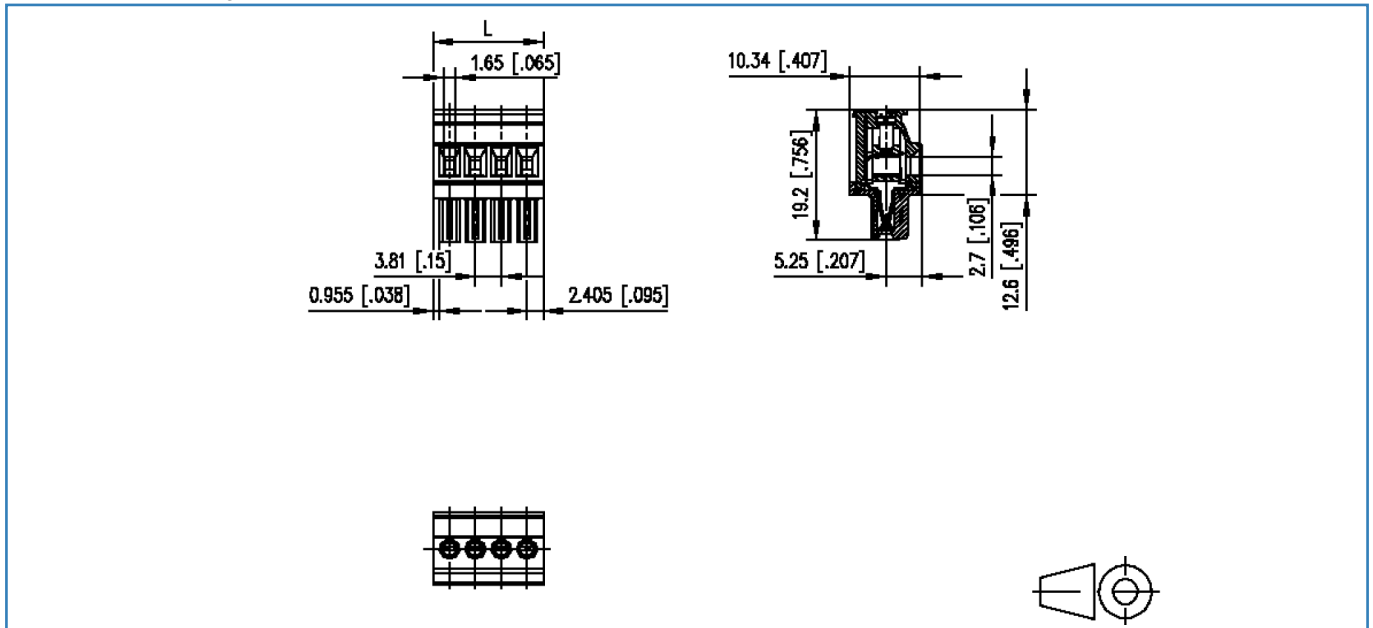
Counterpart

P/N	Designation
311901	PR044xxHBBN Typ 190
311911	PR044xxVBBN Typ 191
313821	PT094xxHBBN Typ 382
313831	PT094xxVBBN Typ 383



Illustrations

Dimensional drawing



$$L = (\text{pole size} - 1) \times \text{centerline} + 4 \quad [0.157]$$