

## QBM D4i LS/PD LI R *(NEW)*

Qualified Bluetooth mesh D4i Module | Light management systems



### Product family features

- With/without Daylight and Occupancy Sensor DEXAL Module
- Qualified Bluetooth mesh enabled by Silvair
- Control of DEXAL drivers or DALI drivers with additional DALI bus power supply
- Intended for installation into a standard 1/2" knockout
- Works with OSRAM Hubsense®
- Works with OSRAM DEXAL®

### Product family benefits

- Design freedom due to compact size
- Easy to integrate in luminaire
- Minimize internal wiring in combination with DEXAL drivers
- Secured product communication granted by ioXT and PSA Certificates

## Areas of application

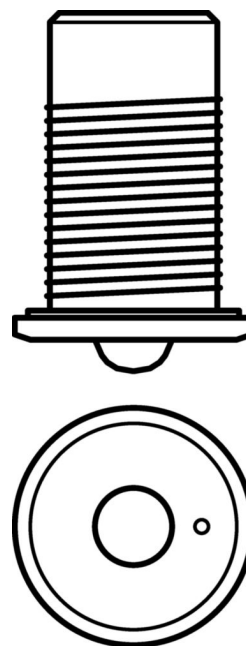
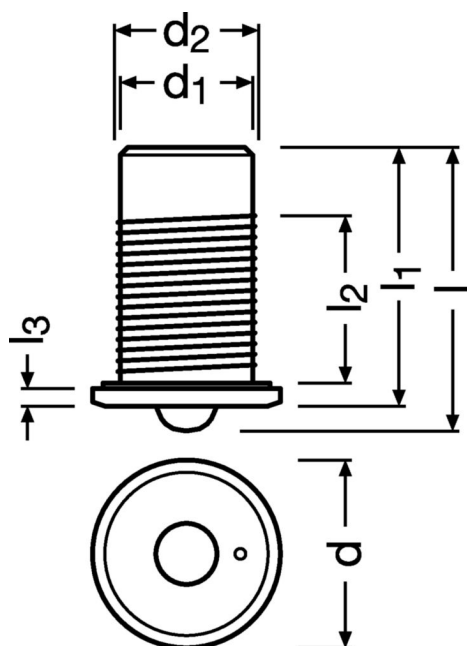
- Open offices
- Individual offices
- Conference rooms
- Classrooms
- Storage and break areas
- Stairways
- Toilets

## Technical data

### Electrical data

Input voltage DC	12...22.5 V
Nominal voltage	13,5 ... 22,5 V
Mains frequency	0 Hz
Maximum TX power	+4 dBm
Peak input current	30 mA
Average input current	10 mA
Radio frequency	2.4 GHz
Wireless protocol	Qualified Bluetooth mesh enabled by Silvair
Wireless range	11 m line of sight
Standby power	< 150 mW
Required DALI current (typical)	10 mA
Peak DALI current	30 mA
System wattage	0.2999999999999999 W

## Dimensions & weight



Product weight	18.20 g
Wire preparation length, input side	7 ... 9 mm
Cable cross-section, input side	0.25 ... 0.75 mm <sup>2</sup>
Length	43.5 mm
Width	28.0 mm
Height	43.5 mm
Mounting hole diameter	22.2 ... 23.2 mm
Maximum allowed cable length	10
Screw thread length	25 mm
Diameter	28.0 mm

## Temperatures & operating conditions

Maximum temperature at tc test point	60 °C
Ambient temperature range	-20 ... +50 °C
Temperature range at storage	0 ... 70 °C
Permitted rel. humidity during operation	0 ... 90 %
Permitted relative humidity at storage	0 ... 95 %

## Lifespan

Lifespan	50000 h
----------	---------

## Additional product data

Successor EAN	6977078997553
---------------	---------------

## Capabilities

Operating range, light sensor	<1000 lx
Detection angle	90 °
Dimming interface	D4i
Detection area	8 m <sup>2</sup>
Maximum installation height	5 m
Type of sensor	Daylight / PIR
Dimmable	Yes
Type of installation	Luminaire integration
Compatibility	Works with OSRAM HubSense / Works with OSRAM DEXAL
Control output	D4i
Status Indicator	Blue: network Status / Red: Motion detected
Reset	Magnetic <sup>1)</sup>
Number of connected drivers	4
Control interface	qualified Bluetooth mesh
Detection angle (Light sensor)	+/- 25°
Detection angle (PIR)	+/-90°

1) by magnet

## Certificates & standards

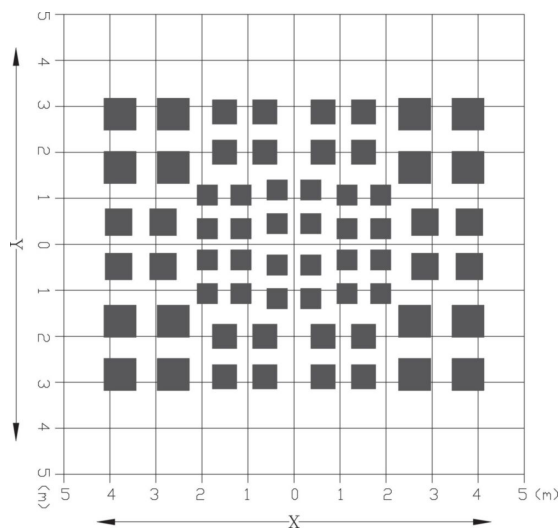
Approval marks – approval	CE / D4i / ioXT / PSA
Protection class	II
Type of protection	IP54

## Logistical data

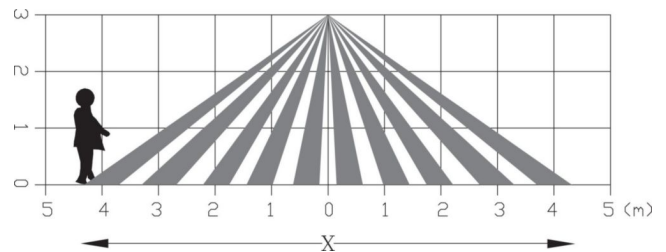
Commodity code	90314990000
----------------	-------------

## Environmental information

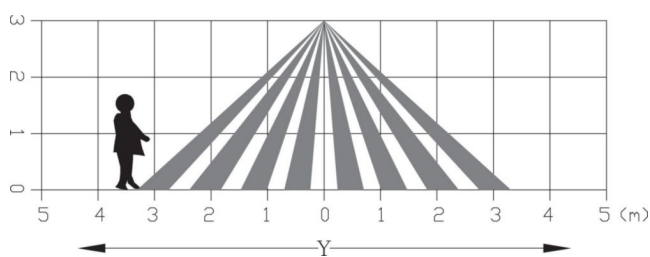
Information according Art. 33 of EU Regulation (EC) 1907/2006 (REACH)	
Primary Article Identifier	4052899627154
Date of Declaration	21-08-2024
Declaration No. in SCIP database	In work
SCIP_STATUS	In work



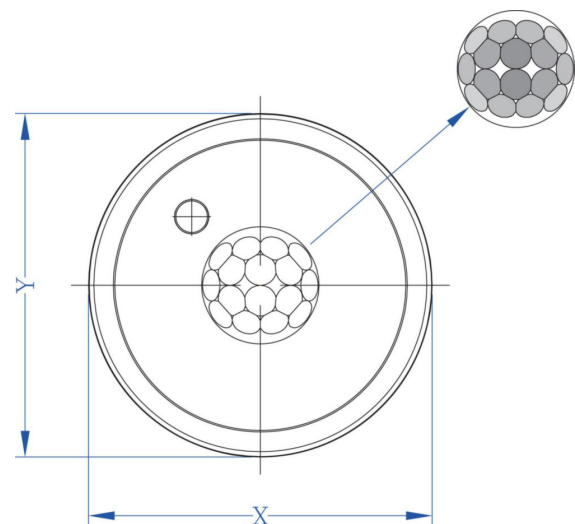
LS PD LI R DP detection pattern height



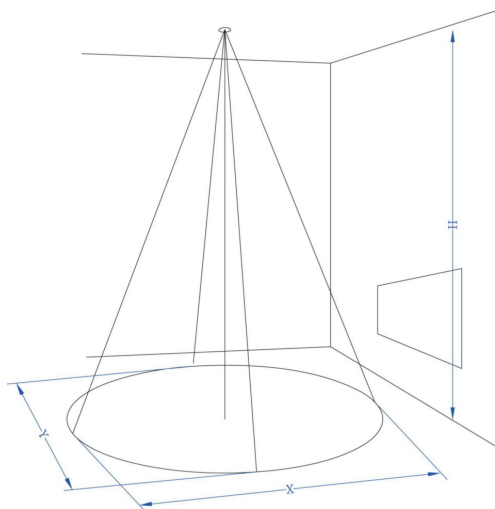
LS PD LI R DP1 detection pattern X direction



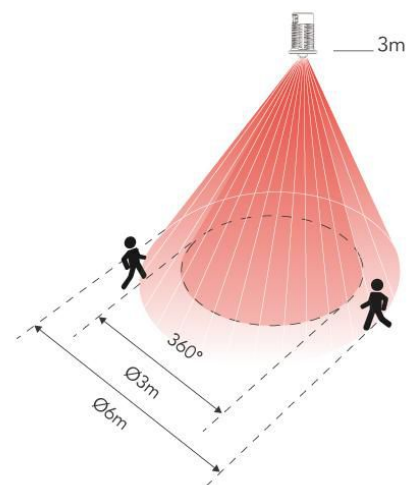
LS PD LI R DP2 detection pattern Y direction



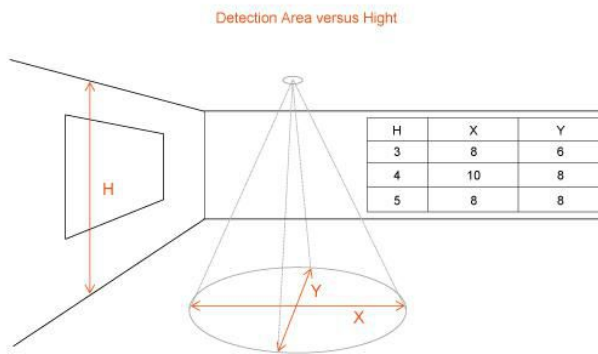
LS PD LI R DP4



LS PD LI R DP3 detection area vs height



LS PD LI R detection



LS PD LI R Pattern



## Additional product information

- By integrating the device into a casing the wireless range could be affected, in particular by metal surfaces. Therefore, the wireless range needs to be verified after integration.
- The device could be reset to factory default by placing a strong Neodym magnet (e.g. N35, d=6.35 mm x h=1.59 mm) near the corner of the bezel for 5 seconds.
- The status LED of the device indicates following Network status. Fast blinking (Blue): Not connected to a network, Slow blinking (Blue); Connected to a network, Blink twice (Blue): Mesh package received, Long blink (Blue) Factory reset, Blink one (Red): Motion detected
- The device has passed successfully the SILVAIR Testing process.
- The device can be put into operation using the OSRAM HubSense Commissioning Tool (<https://platform.hubsense.eu>), subject to prior acceptance of the Terms of Use and the Privacy Policy.
- OSRAM may terminate or suspend the use of the HubSense Commissioning Tool at any time and for any or no reason in its sole discretion, even if access and use is continued to be allowed to others.
- The device complies with Bluetooth mesh Standard v1.0. It can also be used in 3rd party Bluetooth mesh network, that complies with this standard and that supports the mesh models of this device, and with certain 3rd party commissioning tools, that support the mesh models of this device. In order to ensure correct interoperability a verification with the 3rd party network components and the 3rd party commissioning tool is necessary in advance. Please contact OSRAM ([support@hubsense.eu](mailto:support@hubsense.eu)) to receive the actual list of supported models for this device.
- OSRAM shall have no liability for any 3rd party commissioning tool and does not make any representations, express or implied, about the availability and/or performance of such commissioning tool.
- OSRAM shall have no liability for and does not make any representations, express or implied, about the connectivity of OSRAM QBM products with any other products, that have passed the SILVAIR Testing process.

## Download Data

File		
Brochures	PDF	► Technical application guide DEXAL LED drivers (EN)
Product Datasheet	PDF	► QBM D4I LS PD LI R DS 280621
CAD data	Compressed	► QBM D4I LS_PD LI R 200824
Mandatory Publications	PDF	► QBM B NLC D4I CE 4322567 03 140524
Mandatory Publications	PDF	► QBM B NLC D4i UKDoC 4323015 03 160524
User instruction	PDF	► QBM D4I LS PD R Qualified Bluetooth Mesh Presence Daylight Sensor LENS SHIELDS

Logistical Data

Product code	Product description	Packaging unit (Pieces/Unit)	Dimensions (length x width x height)	Volume	Gross weight
4052899627154	QBM D4i LS/PD LI R	Shipping carton box 50 Pieces	330 x 287 x 195 mm	18.47 dm³	30.60 g

The mentioned product code describes the smallest quantity unit which can be ordered. One shipping unit can contain one or more single products. When placing an order, for the quantity please enter single or multiples of a shipping unit

Disclaimer

Subject to change without notice. Errors and omission excepted. Always make sure to use the most recent release.