

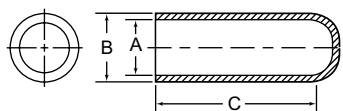


HIGH TEMPERATURE CAPS

**SC Series
Straight Masking Caps**

Specifications:

- Material: Silicone 600°F (316°C) or EPDM 425°F (218°C), See Table
- Hardness: Durometer (Shore A) 55 ± 5
- Color: See Table



Features:

- Excellent sealing due to flexible material
- Masking for studs and tube ends
- Although designed as a cap, can be used to plug holes if inverted
- Silicone: premium masking material (due to high temperature and chemical resistance) can be used multiple times; available in natural and mixed colors for color coding applications
- EPDM: a more economical material with reduced heat resistance, is reusable
- Applications: Powder Coating, E-Coating, Plating, Anodizing and Blasting

See pages 87 and 88 for Application Wizards.



Item No.	Item No.	Color	Item No.	Caps Std	Threads	A		B		C		Bulk Pack Qty.	Color Bulk Pack Qty.
Silicone Natural	Silicone		EPDM Black	UNC	M	in	mm	in	mm	in	mm		
SC002005A	—	—	SC002005B	—	—	0.020	0.5	0.140	3.6	0.500	12.7	1000	—
SC003505A	—	—	SC003505B	—	—	0.035	0.9	0.130	3.3	0.500	12.7	1000	—
SC004007A	—	—	SC004007B	—	—	0.040	1.0	0.130	3.3	0.750	19.1	1000	—
SC006207A	—	—	SC006207C	—	—	0.062	1.6	0.152	3.9	0.750	19.1	1000	—
—	SC006210	Blue	—	2-56	M2	0.070	1.8	0.160	4.1	1.000	25.4	1000	1000
SC007010A	—	—	SC007010B	—	—	0.080	2.0	0.200	5.1	0.750	19.1	1000	—
SC008007A	—	—	SC008007B	3-48	—	0.093	2.4	0.193	4.9	0.750	19.1	1000	—
SC009307A	—	—	SC009307B	4-40	—	0.100	2.5	0.200	5.1	0.500	12.7	1000	—
—	SC009310	White	—	4-40	—	0.100	2.5	0.200	5.1	1.000	25.4	1000	1000
SC010005A	—	—	SC010005B	5-40	M3	0.109	2.8	0.209	5.3	0.750	19.1	1000	—
SC010010A	SC010010	Green	SC010010C	6-32	—	0.125	3.2	0.225	5.7	1.000	25.4	1000	1000
SC010907A	SC010907	Grey	SC010907C	—	—	0.140	3.6	0.260	6.6	1.000	25.4	1000	1000
SC012510A	—	—	SC012510C	—	M4	0.148	3.8	0.248	6.3	1.000	25.4	1000	—
SC014010A	SC014010	White	SC014010C	8-32	M4	0.156	4.0	0.276	7.0	0.500	12.7	1000	1000
SC014810A	SC014810	Pink	SC014810C	8-32	M4	0.156	4.0	0.276	7.0	1.000	25.4	1000	1000
SC015605A	—	—	SC015605B	10-24	—	0.172	4.4	0.292	7.4	0.500	12.7	1000	—
SC015610A	SC015610	Yellow	SC015610C	—	—	0.172	4.4	0.292	7.4	1.000	25.4	1000	1000
SC017205A	—	—	SC017205B	—	—	0.180	4.6	0.300	7.6	1.000	25.4	1000	—
SC017210A	SC017210	Blue	SC017210B	12-24	M5	0.187	4.7	0.307	7.8	0.500	12.7	1000	1000
SC018010A	—	—	SC018010C	12-24	M5	0.187	4.7	0.307	7.8	1.000	25.4	1000	—
SC018705A	—	—	SC018705B	12-24	M5	0.187	4.7	0.307	7.8	1.500	38.1	1000	—
SC018710A	—	—	SC018710B	—	—	0.197	5.0	0.317	8.1	0.500	12.7	1000	—
SC018715A	—	—	SC018715B	—	—	0.218	5.5	0.338	8.6	1.000	25.4	1000	—
SC019705A	—	—	SC019705B	—	M6	0.223	5.7	0.343	8.7	1.000	25.4	1000	—
SC021810A	—	—	SC021810B	—	M6	0.223	5.7	0.343	8.7	1.500	38.1	1000	—
SC022310A	—	—	SC022310B	1/4-20	—	0.234	5.9	0.354	9.0	0.500	12.7	1000	—
SC022315A	SC022315	Pink	SC022315B	1/4-20	—	0.234	5.9	0.354	9.0	1.000	25.4	1000	1000
SC023405A	—	—	SC023405B	1/4-20	—	0.234	5.9	0.354	9.0	1.125	28.6	1000	—
SC023410A	SC023410	Green	SC023410C	1/4-20	—	0.234	5.9	0.354	9.0	1.500	38.1	1000	1000
SC02341125A	—	—	SC02341125B	—	—	0.250	6.3	0.370	9.4	1.000	25.4	1000	—
SC023415A	—	—	SC023415B	—	—	0.250	6.3	0.370	9.4	1.500	38.1	1000	—
SC025010A	SC025010	Grey	SC025010C	5/16-18	—	0.281	7.1	0.401	10.2	1.000	25.4	1000	1000
SC025015A	—	—	SC025015B	—	M8	0.295	7.5	0.415	10.5	0.500	12.7	1000	—
SC028110A	SC028110	Blue	SC028110B	—	M8	0.295	7.5	0.415	10.5	1.000	25.4	1000	500
SC029505A	—	—	SC029505B	—	M8	0.295	7.5	0.415	10.5	1.500	38.1	1000	—
SC029510A	—	—	SC029510B	—	M8	0.295	7.5	0.415	10.5	1.750	44.5	1000	—
SC029515A	—	—	SC029515C	—	—	0.312	7.9	0.432	11.0	1.000	25.4	1000	—
SC029517A	—	—	SC029517B	—	—	0.312	7.9	0.432	11.0	1.500	38.1	1000	—
SC031210A	SC031210	White	SC031210C	—	—	0.340	8.6	0.460	11.7	1.000	25.4	1000	500
SC031215A	—	—	SC031215B	3/8-14	—	0.355	9.0	0.475	12.1	1.500	38.1	1000	—
SC034010A	SC034010	Pink	SC034010B	—	M10	0.375	9.5	0.495	12.6	1.000	25.4	1000	500
SC035515A	—	—	SC035515B	—	M10	0.375	9.5	0.495	12.6	1.500	38.1	1000	—
SC037510A	SC037510	Yellow	SC037510B	7/16-14	—	0.406	10.3	0.526	13.4	1.000	25.4	1000	500
SC037515A	—	—	SC037515C	—	—	0.437	11.1	0.557	14.2	1.000	25.4	500	—
SC040610A	SC040610	Blue	SC040610B	—	M12	0.456	11.6	0.576	14.6	1.500	38.1	200	250
SC043710A	SC043710	Grey	SC043710B	—	—	0.468	11.9	0.588	14.9	1.000	25.4	200	250
SC045615A	—	—	SC045615B	1/2-13	—	0.480	12.2	0.600	15.2	1.500	38.1	200	—
SC046810A	SC046810	White	SC046810C	—	—	0.500	12.7	0.620	15.8	1.500	38.1	200	250
SC048015A	SC048015	Pink	SC048015B	9/16-12	M14	0.535	13.6	0.655	16.6	1.500	38.1	200	250
SC050015A	SC050015	Green	SC050015C	—	M15	0.562	14.3	0.682	17.3	1.500	38.1	200	250
SC053515A	SC053515	Yellow	SC053515B	5/8-11	M16	0.600	15.2	0.720	18.3	1.500	38.1	200	250
SC056215A	SC056215	Blue	SC056215B	—	M17	0.625	15.9	0.745	18.9	1.500	38.1	200	250
SC060015A	SC060015	Grey	SC060015C	—	M17	0.625	15.9	0.745	18.9	2.500	63.5	100	250
SC062515A	—	—	SC062515B	—	—	0.687	17.4	0.807	20.5	1.500	38.1	200	—
SC062525A	—	—	SC062525B	3/4-10	M19	0.730	18.5	0.850	21.6	1.500	38.1	200	—
SC068715A	SC068715	Pink	SC068715B	—	—	0.750	19.1	0.870	22.1	1.500	38.1	200	100
SC073015A	SC073015	Green	SC073015B	—	—	0.750	19.1	0.870	22.1	3.500	88.9	200	100
SC075015A	SC075015	Yellow	SC075015B	—	—	0.780	19.8	0.900	22.9	1.500	38.1	200	100
SC075035A	—	—	SC075035B	—	—	0.812	20.6	0.932	23.7	1.500	38.1	200	—
SC078015A	SC078015	Blue	SC078015B	—	—	0.875	22.2	0.995	25.3	1.500	38.1	200	100
SC081215A	SC081215	Grey	SC081215B	—	M24	0.937	23.8	1.057	26.9	1.500	38.1	100	100
SC087515A	—	—	SC087515B	1-8	M25	0.970	24.6	1.090	27.7	1.500	38.1	100	—
SC093715A	SC093715	White	SC093715B	—	M27	1.000	25.4	1.120	28.5	1.500	38.1	100	100
SC097015A	SC097015	Pink	SC097015B	—	—	1.062	26.0	1.182	30.0	1.500	38.1	100	100
SC100015A	SC100015	Green	SC100015B	—	—	1.062	26.0	1.182	30.0	2.000	50.8	100	100
SC106215A	—	—	SC106215B	—	M30	1.125	28.6	1.245	31.6	1.500	38.1	100	—
SC106220A	SC106220	Grey	SC106220B	—	—	1.187	30.1	1.307	33.2	1.500	38.1	100	100
SC112515A	SC112515	Blue	SC112515B	1 1/4-7	M33	1.250	31.8	1.370	34.8	1.500	38.1	100	100
SC118715A	SC118715	Yellow	SC118715B	—	—	1.350	34.3	1.470	37.3	1.750	44.4	100	100
SC125015A	—	—	SC125015B	1 1/4-7	M39	1.500	38.1	1.620	41.2	1.750	44.4	100	—
SC135017A	SC135017	White	SC135017B	—	—	1.625	41.3	1.745	44.3	2.000	50.8	100	100
SC150017A	SC150017	Green	SC150017B	1 3/4-5	—	1.750	44.4	1.870	47.5	2.000	50.8	100	50
SC162520A	—	—	SC162520B	—	—	1.875	47.6	1.995	50.7	2.000	50.8	50	—
SC175020A	SC175020	Yellow	SC175020B	2-4 1/2	—	2.000	50.8	2.120	53.9	2.000	50.8	50	50
SC187520A	SC187520	Grey	SC187520B	—	—	1.875	47.6	1.995	50.7	2.000	50.8	50	50
SC200020A	SC200020	Blue	SC200020B	2-4 1/2	—	2.000	50.8	2.120	53.9	2.000	50.8	50	25