

MATERIAL:

- 1.HOUSING: HIGH TEMPERATURE PLASTIC , BK
- 2.CONTACT: COPPER ALLOY
- 3.GUARD PLATE:STAINLESS STEEL
- 4.SHIELD: STAINLESS STEEL

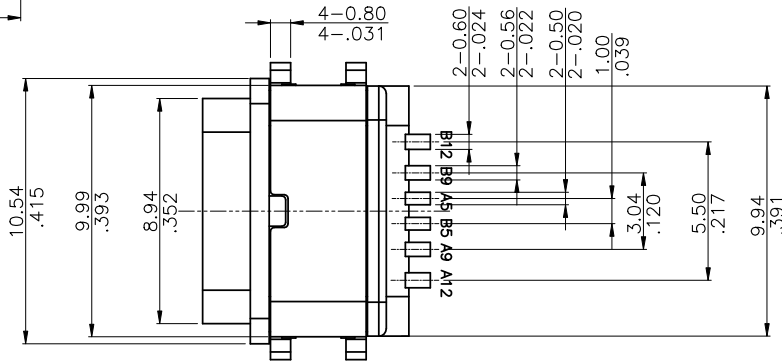
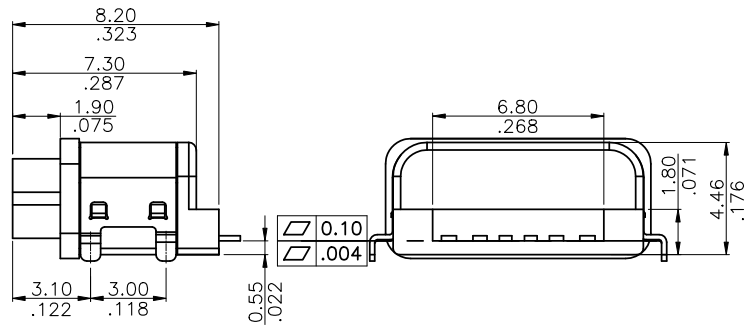
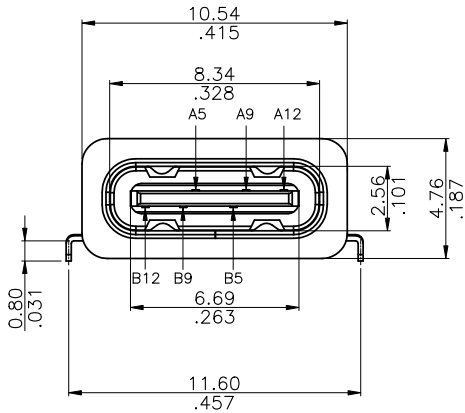
FINISH:

- CONTACT: SEE ORDER INFORMATION
- SHELL: NICKEL PLATING
- WATERPROOF GRADE: IP67

Ordering Code:

CU39 06 S * S C L R 013 -LF
 ① ② ③ ④ ⑤ ⑥ ⑦ ⑧ ⑨

- ① Series No: CU39
- ② No. of Circuits: 06Pin
- ③ Contact Type: S= Socket
- ④ Plating Option:
 A= Gold flash plated on Contact area,
 Matte Tin plated on Soldertails,
 Nickel underplating over all
- ⑤ Shell Material & Plating: S= Stainless Steel
 Ni Plated
- ⑥ Contact Material: C= Copper Alloy
- ⑦ Insulator Material & Color Option:
 High temperature plastic , BK
- ⑧ Packing: R= Tape & Reel
- ⑨ -LF=For Lead Free IR Reflow Process



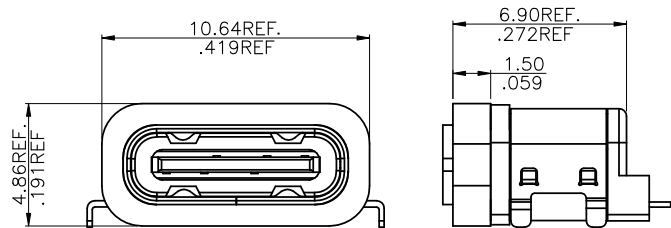
Lead Free Process **RoHS Compliant**



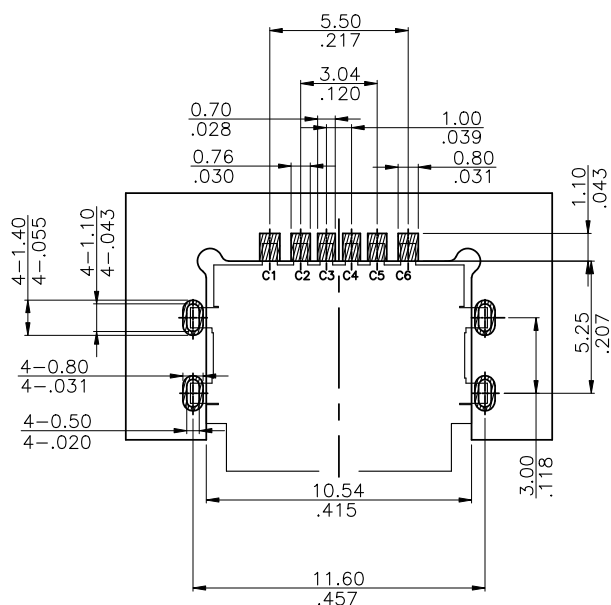
瀚荃股份有限公司
CviLux Corporation

4					DATE	UNIT: mm / inch	TITLE: CU39 TYPE C/F 06 PIN CH=1.58mm SMT TYPE WATERPROOF	
3					DRAWN BY: Ash	02/22-22'	TOLERANCE UNLESS OTHERWISE SPECIFIED	
2					ENGINEER: Ash	02/22-22'		
1					CHECKED BY: Keny	02/22-22'	MATERIAL:	
SYM	NAME	DATE	REVISIONS	APPROVED BY: Keny	02/22-22'			
							.X ± 0.25/.010	X' ± 4'
							.XX ± 0.20/.008	.X' ± 2'
							.XXX ± 0.10/.004	.XX' ±
							FINISH:	

DRAWING NO.	CU39S13SA	PART NO.	CU3906S*SCLR013-LF
SCALE	1 / 1	SHEET	1 OF 3



WITH O-RING



RECOMMENDED P.C.B. LAYOUT
TOLERANCE UNSPECIFIED ±0.05mm

USB TYPE-C FULL-FEATURED RECEPTACLE INTERFACE PIN ASSIGNMENTS

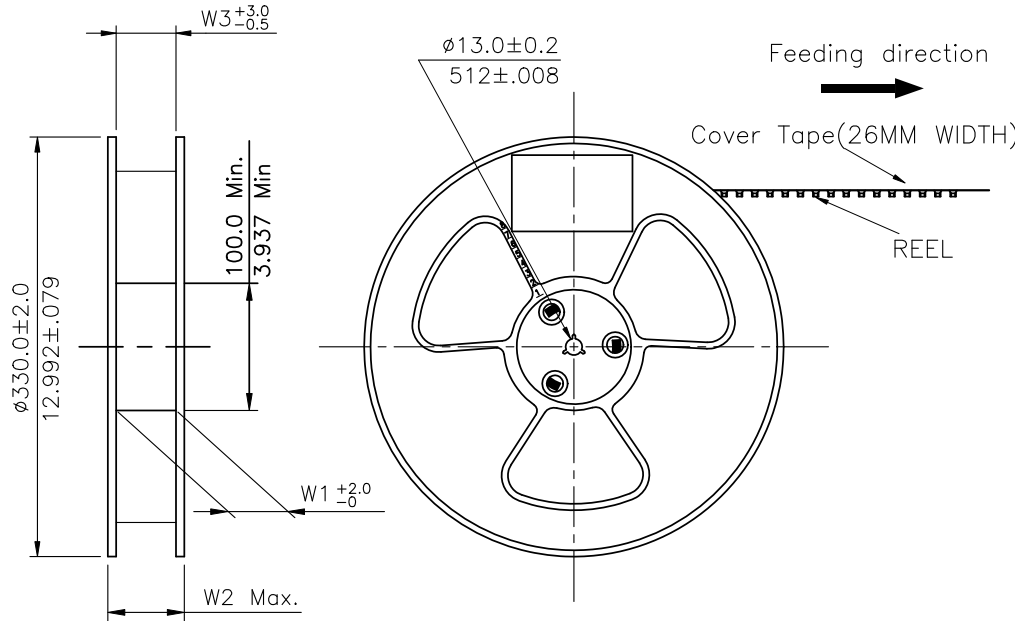
PIN	Signal Name	Description	PIN	Signal Name	Description
A1			B12	GND	Ground return
A2			B11		
A3			B10		
A4			B9	VBUS	Bus Power
A5	CC1	Configuration Channel	B8		
A6			B7		
A7			B6		
A8			B5	CC2	Configuration Channel
A9	VBUS	Bus Power	B4		
A10			B3		
A11			B2		
A12	GND	Ground return	B1		

Lead Free Process RoHS Compliant



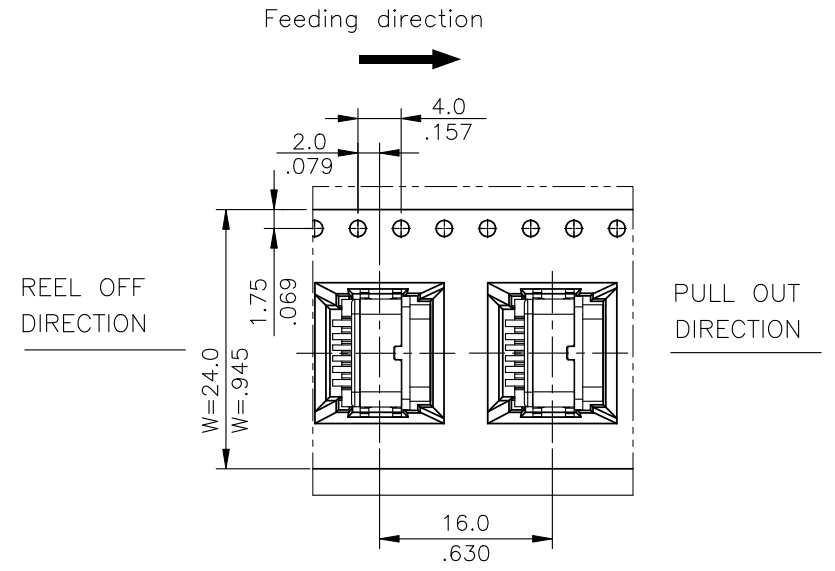
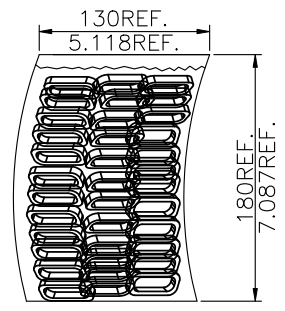
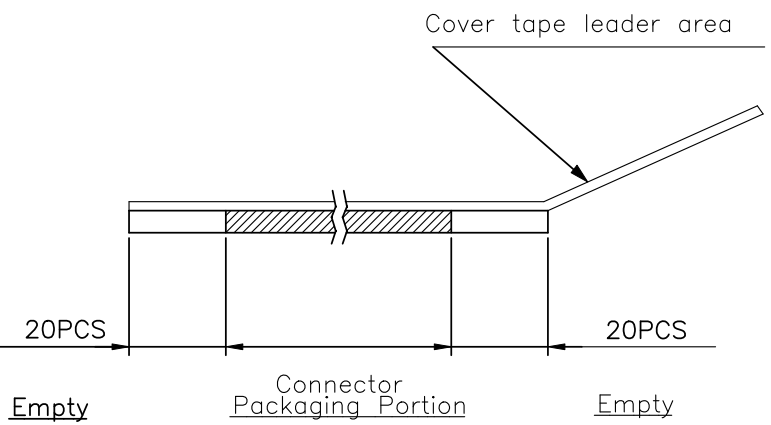
4					DATE	UNIT: mm / inch	TITLE: CU39 TYPE C/F 06 PIN CH=1.58mm SMT TYPE WATERPROOF
3				DRAWN BY:	Ash	02/22-22'	TOLERANCE UNLESS OTHERWISE SPECIFIED
4				ENGINEER:	Ash	02/22-22'	.X ± 0.25/010 .X* ± 4'
1				CHECKED BY:	Keny	02/22-22'	.XX ± 0.20/008 .X* ± 2'
SYM	NAME	DATE	REVISIONS	APPROVED BY:	Keny	02/22-22'	.XXX ± 0.10/004 .XX* ±

DRAWING NO.	CU39S13SA	PART NO.	CU3906S*SCLR013-LF
SCALE	1 / 1	SHEET	2 OF 3



- NOTE :
- * Reel Material : HIPS
 - * Carrier Material : Clear, Conductive Polystyrene Alloy
 - * Cover Tape Material : Polyester
 - * Cover Tape Peel Strength : 0.1N – 1.3N
 - * Carrier camber is within 1mm in 250mm
 - * All dimensions meet EIA-481-B requirements.
 - * Quantity : 800 PCS/Reel

Dimension				Packing (Reel/Carton)
E	W1	W2	W3	
24.0(.945)	24.5(.965)	30.5(1.201)	24.5(.965)	10



Lead Free Process RoHS Compliant

4					DATE	UNIT: mm / inch	TITLE: CU39 TYPE C/F 06 PIN CH=1.58mm SMT TYPE WATERPROOF
3				DRAWN BY: Ash	02/22-22'	TOLERANCE UNLESS OTHERWISE SPECIFIED	
4				ENGINEER: Ash	02/22-22'	.X ± .X' ±	MATERIAL:
1				CHECKED BY: Keny	02/22-22'	.XX ± .X' ±	
SYM	NAME	DATE	REVISIONS	APPROVED BY: Keny	02/22-22'	.XXX ± .XX' ±	FINISH:



DRAWING NO.	CU39S13SA	PART NO.	CU3906S*SCLR013-LF
SCALE		SHEET	3 OF 3