

MATERIAL:

- 1.HOUSING: PA4T, GLASS FIBER FILLED, BK
- 2.CONTACT: COPPER ALLOY (T=0.20mm)
- 3.GUARD PLATE:STAINLESS STEEL
- 4.SHIELD: STAINLESS STEEL

FINISH:

- CONTACT: SEE ORDER INFORMATION
- SHELL: NICKEL PLATING
- Protection level:IP68

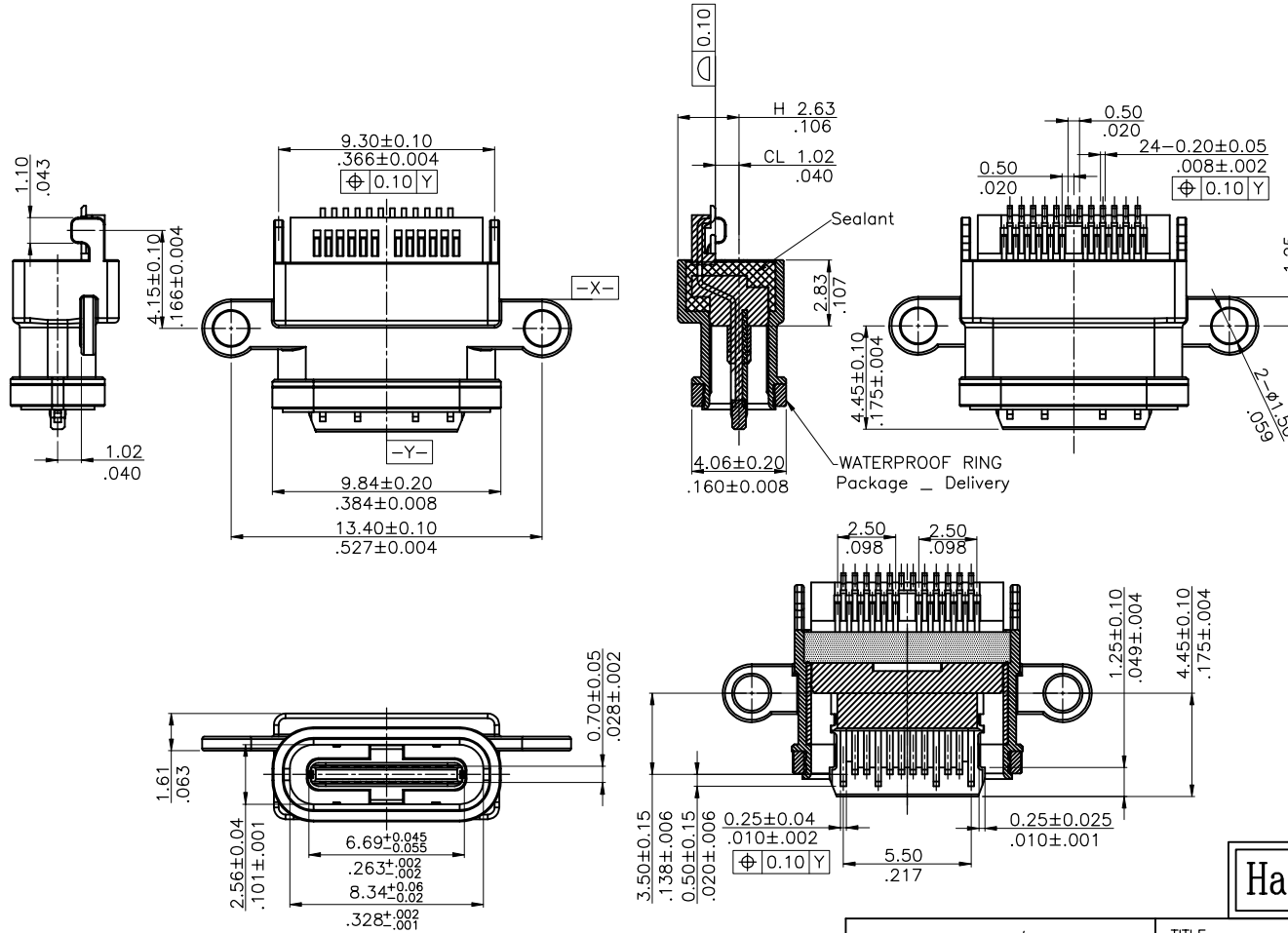
Ordering Code:

CU39 24 S * Z B N R 007 -NH
 ① ② ③ ④ ⑤ ⑥ ⑦ ⑧ ⑨ ⑩

- ① Series No.
- ② No of Circuits:
- ③ S= Socket
- ④ Plating option:

- A= Gold flash plated on Contact area, Matte Tin plated on Solderails, Nickel underplating over all
- B= 15u" gold plated on Contact area, Matte Tin plated on Solderails, Nickel underplating over all
- C= 30u" gold plated on Contact area, Matte Tin plated on Solderails, Nickel underplating over all

- ⑤ Shell Material & Plating:
Z= kirsite
- ⑥ Contact MATERIAL: B= COPPER ALLOY
- ⑦ Insulator Material & Color option:
N= PA4T Black
- ⑧ Packing Option: R= Reel Packing
- ⑨ 007:Stream code
- ⑩ -NH: For Lead Free wave or IR Reflow Processes & Halogen Free



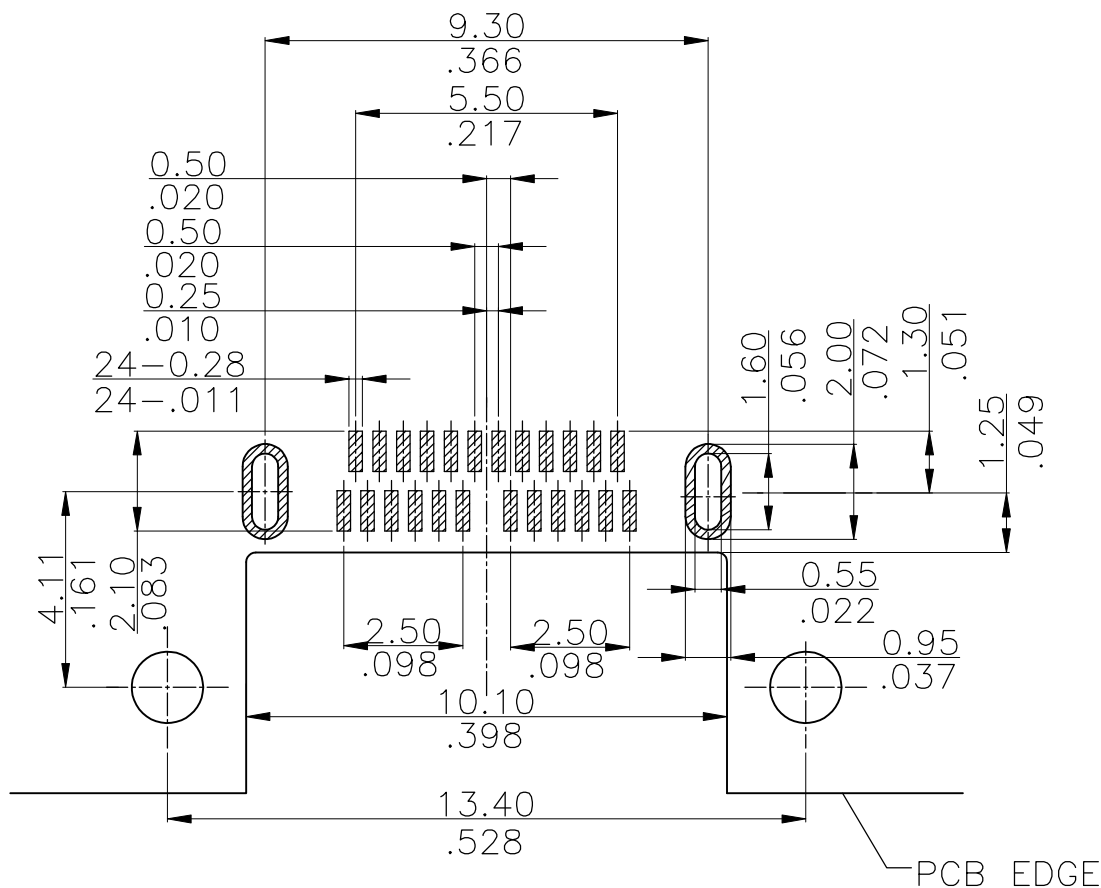
Halogen-Free **Lead Free Process** **RoHS compliant**

③				DRAWN BY:	kevin	2020/10/26
②				ENGINEER:	kevin	2020/10/26
①				CHECKED BY:	KENY	2020/10/26
SYM	NAME	DATE	REVISIONS	APPROVED BY:	Lawrence	2020/10/26

UNIT: mm / inch	
TOLERANCE UNLESS OTHERWISE SPECIFIED	
.X ± 0.25	X' ± 4'
.XX ± 0.20	.X' ± 2'
.XXX ± 0.10	.XX' ± 1'

TITLE:	USB Type C/M 24 PIN CL=1.02mm SMT TYPE WATERPROOF
MATERIAL:	
FINISH:	

瀚荃股份有限公司 CviLux Corporation			
DRAWING NO.	CU39S07SA	PART NO.	CU3924S*ZBNR007-NH
SCALE	1 / 1	SHEET	1 OF 3




USB TYPE-C FULL-FEATURED RECEPTACLE INTERFACE PIN ASSIGNMENTS

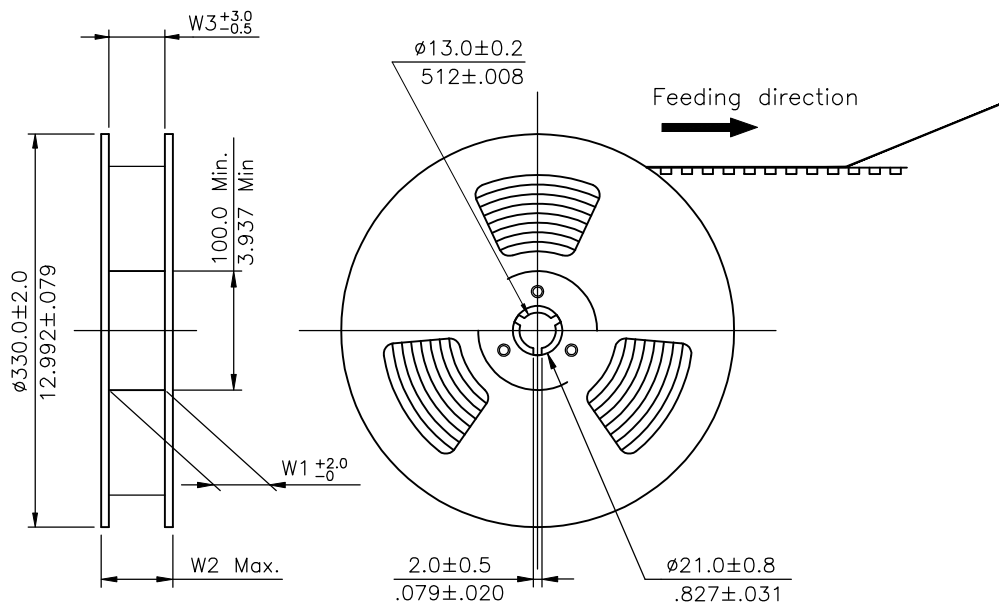
PIN	Signal Name	Description	PIN	Signal Name	Description
A1	GND	Ground return	B12	GND	Ground return
A2	SSTXp1	Positive half of first SuperSpeed TX differential pair	B11	SSRXp1	Positive half of first SuperSpeed RX differential pair
A3	SSTXn1	Negative half of first SuperSpeed TX differential pair	B10	SSRXn1	Negative half of first SuperSpeed RX differential pair
A4	VBUS	Bus Power	B9	VBUS	Bus Power
A5	CC1	Configuration Channel	B8	SBU2	Sideband Use(SBU)
A6	Dp1	Positive half of the USB 2.0 differential pair-Position 1	B7	Dn2	Negative half of the USB 2.0 differential pair-Position 2
A7	Dn1	Negative half of the USB 2.0 differential pair-Position 1	B6	Dp2	Positive half of the USB 2.0 differential pair-Position 2
A8	SBU1	Sideband Use(SBU)	B5	CC2	Configuration Channel
A9	VBUS	Bus Power	B4	VBUS	Bus Power
A10	SSRXn2	Negative half of second SuperSpeed RX differential pair	B3	SSTXn2	Negative half of second SuperSpeed TX differential pair
A11	SSRXp2	Positive half of second SuperSpeed RX differential pair	B2	SSTXp2	Positive half of second SuperSpeed TX differential pair
A12	GND	Ground return	B1	GND	Ground return

RECOMMENDED P.C.B. LAYOUT (T:1.00mm)
TOLERANCE: ±0.05mm

Lead Free Process

RoHS Compliant

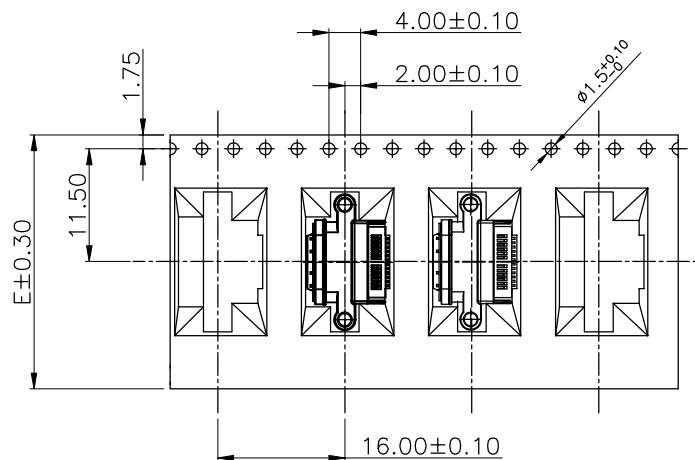
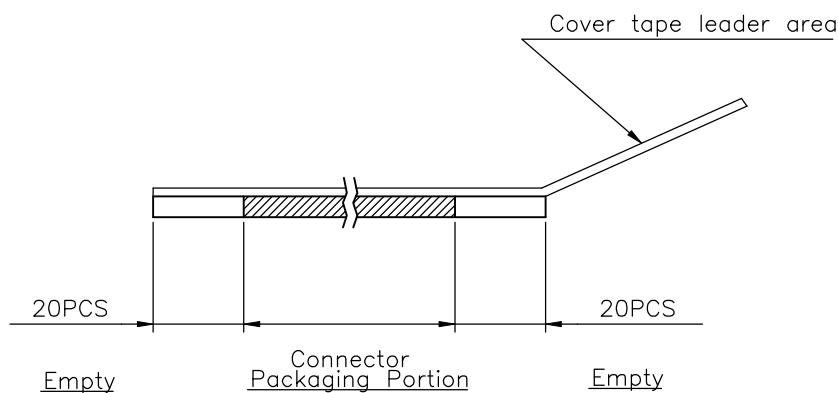
SYM	NAME	DATE	REVISIONS	DRAWN BY:	DATE	UNIT:	TITLE:	 瀚荃股份有限公司 CviLux Corporation
3				kevin	2020/10/26	mm / inch	USB Type C/M 24 PIN CL=1.02mm SMT TYPE WATERPROOF	
2				kevin	2020/10/26	TOLERANCE UNLESS OTHERWISE SPECIFIED	MATERIAL:	
1				KENY	2020/10/26	.X ± 0.25 X' ± 4' .XX ± 0.20 X' ± 2' .XXX ± 0.10 XX' ± 1'	FINISH:	
				Lawrence	2020/10/26			DRAWING NO. CU39S07SA PART NO. CU3924S*ZBNR007-NH
								SCALE 1 / 1 SHEET 2 OF 3



NOTE :

- * Reel Material : HIPS
- * Carrier Material : Clear, Conductive Polystyrene Alloy
- * Cover Tape Material : Polyester
- * Cover Tape Peel Strength : 0.1N – 1.3N
- * Carrier camber is within 1mm in 250mm
- * All dimensions meet EIA-481-B requirements.
- * Quantity : 800 PCS/Reel

Dimension				Packing (Reel/Carton)
E	W1	W2	W3	
24.0(.945)	24.5(.945)	30.5(1.181)	24.5(.945)	10



Lead Free Process RoHS Compliant

				DATE	UNIT: mm / inch	TITLE:	瀚荃股份有限公司 CviLux Corporation					
3				DRAWN BY: kevin	2020/10/26	USB Type C/M 24 PIN CL=1.02mm SMT TYPE WATERPROOF						
2				ENGINEER: kevin	2020/10/26	MATERIAL:						
1				CHECKED BY: KENY	2020/10/26		FINISH:					
SYM	NAME	DATE	REVISIONS	APPROVED BY: Lawrence	2020/10/26	.X ± 0.25		X' ± 4'	DRAWING NO.	CU39S07SA	PART NO.	CU3924S*ZBNR007-NH
							.XX ± 0.20	.X' ± 2'	SCALE	1 / 1	SHEET 3 OF 3	
							.XXX ± 0.10	.XX' ± 1'				