

# BMP®51 Label Printer

Portable Printers



**Learn more at:**  
[BradyID.com/bmp51](http://BradyID.com/bmp51)

### Your Complete Printing Solution:

BMP51 cartridges with label and print ribbon..... page 38

## BMP®51 LABEL PRINTER

### Made to get the job done.

Print continuous and die-cut labels up to 1.5" wide and with more material options.

- Ribbon and label materials in one easy-to-load cartridge
- Prints 1 in. per second
- 200+ label parts in 14 materials
- 1" sleeves and 1.5" continuous output
- Material recognition and automatic label formatting
- Large, graphical display with backlight
- Durable built-in cutter with label retention
- Robust software for advanced label design
- Optional WiFi card for wireless printing via a network
- Tough, durable label materials that won't fade, smear or fall off

### BMP®51 label printer and accessories

Catalog #	Description
BMP51	BMP51 Printer*, Rechargeable Li-Ion Battery Pack and AC Adaptor/Battery Charger
BMP51-KIT-AC	BMP51 Printer* with AC Adaptor/Battery Charger
BMP51-KIT-LMK	BMP51 Printer*, LabelMark and AC Adaptor
Accessories	
M50-MAGNET	BMP50 Series Magnet Accessory
BMP-UBP	Lithium Ion Rechargeable Battery Pack
BMP-UBP-AC	Lithium Ion Rechargeable Battery Pack with AC Adaptor/Battery Charger
NET-LAN	Brady Network Card - Ethernet only
NET-WIFI	Brady Network Card - WiFi only
M50-HC	BMP50 Series Hard Carrying Case
M50-SC	BMP50 Series Soft Carrying Case
M-AC-143110	BMP50 Series AC Adaptor/Battery Charger
M-USB-103788	BMP50 Series USB Cable
M50-BATT-TRAY	BMP50 Series Spare Battery Tray

\* Printer ships with hard carrying case, battery tray for AA batteries, USB cable, drivers cd, product cd, quick start guide, and one MC-1500-595-WT-BK. Network card sold separately.

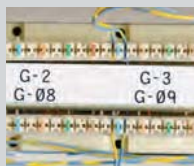
Patents applied for: 6,732,619 and 7,070,347 on printer. 6,929,415 on the PermaSleeve® cartridges. 8,542,155 on wireless and ethernet cards.



(Catalog# BMP51 shown)

BMP®51 Printer Specifications	
Print speed	1.18 in./sec. (w/AC Adapter)
Print and color capabilities	Thermal Transfer / Monochrome
Print resolution	300 dpi
PC compatibility or standalone	Standalone and PC connect
Connectivity options	USB/WIFI (field installable), LAN
Software compatibility	LabelMark™ Software, Brady Workstation Apps, Brady Mobile Apps w/ WiFi card
Power supply options	Li-ION rechargeable battery, 8AA, AC adapter
Standard warranty	2 years
Dimensions	6 in. W x 10.3 in. H x 3.6 in. D
Weight	2.6 lbs (w/o tape, batteries)
Print features	
Screen size	13 lines x 36 characters
Backlit screen	Yes
Keyboard style	QWERTY
Max print width	1.5 in.
Font types available	(2) Brady Alpine and Brady Fixed Width
Font sizes (points)	Custom, Auto, 4, 6, 7, 9, 10, 13, 14, 16, 20, 26, 28, 32, 38, 40, 42, 45, 51, 55, 60, 65, 70, 76, 102
Multi-line label capabilities	32
Label print rotation	Yes
Data serialization	Yes, multiple and linked
Barcode capabilities and types	Code 39, Code 128 and more using Brady Workstation
Memory capacity	25,000 characters up to 48 MB
Data transfer from PC	Yes
Print preview	Yes
Symbols available	450
Label supply characteristics	
Label/ribbon supply	Cartridge w/ included ribbon
Material formats supported	Continuous and die cut labels
Media width	0.25 in. to 1.5 in.
Types of materials	Outdoor vinyl, nylon cloth wire ID, heat-shrink wire ID, self-laminating wire ID, removable cloth wire ID, datacomm cable tags (3), standard polyester, aggressive adhesive polyester, metallized polyester, non-adhesive tag, outdoor reflective
Quantity of label parts available	200+ label parts
Cartridge series	M-series

### Get the job done faster, easier and with confidence



Voice and data communications



PermaSleeve® wire marking sleeves



Product identification



Panel component identification



Laboratory identification



General ID ...and much more!



## Brady Workstation Apps

Brady has revolutionized its label creation software by now offering apps specific to your projects.

Once the free Brady Workstation is installed on your PC, you can then download a variety of free or paid labeling apps including Custom Label Designer App, Text Label App and more. **No print drivers needed!**



**Recommended:**

### Wire Identification Suite

**12 apps designed for wire and cable marking applications**

For creating wire and cable labels, the Wire Identification Suite includes the right mix of Brady Workstation apps. It allows you to easily create single line labels, labels with wrapping text, and the serialization and importing of data without having to worry about alignment. If you are labeling or wrapping wires and cables, this is the suite for you!

*Apps included: Advanced Import, Advanced Sequence, Batch Print, Excel Import, Flip Flop, Manage Files, Print Partner, Sequence, Template Editor, Text Labels, Label Settings.*

**For more information on all apps, view page 244.**



## Free 30-Day Trial!



**1.** Download Brady Workstation at [workstation.bradyd.com](http://workstation.bradyd.com)



**2.** Fill your workstation with individual apps or an entire suite.



**3.** Save time by quickly designing labels and printing to your printer. **No print drivers needed!**

## Brady mobile apps for on-the-go printing

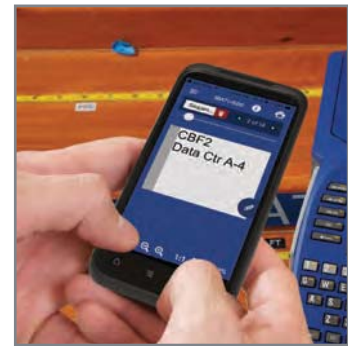
We understand that you don't always have your PC with you to design labels. That's why we also offer two Brady Workstation Mobile Apps to enable you to quickly design labels on any iOS device, Android smartphone or Windows tablet and print those labels with your BMP®51 printer.\*



• **Brady Workstation Mobile Text Labels** enables you to design professional text-only labels on the spot with your mobile device.



• **Brady Workstation Mobile Print Partner** enables you to complete pre-defined fields with your mobile device using protected company label templates. Use Brady Workstation on a computer to create your own template and then open the template on your mobile device within the Brady Workstation Mobile Print Partner app from either a local disk (SD-card) or a cloud location, like Google Drive.



*\*Brady WiFi network card required to connect printer to mobile device.*

## Networking options

The BMP®51 printer connects to your PC via the included USB cable. To avoid use of a physical cable, optional field-installable network cards are also available:



USB cable  
(Included)



Ethernet only card  
(Catalog#: NET-LAN)



WiFi only card  
required if printing  
from mobile apps  
(Catalog#: NET-WIFI)



### BMP®53 printer owners:

The BMP53 printer has been discontinued, but Brady continues to manufacture and stock label cartridges for use with your BMP53 printer.

**View the following pages for available label cartridges.**

