

ON Semiconductor

Is Now

onsemi™

To learn more about onsemi™, please visit our website at
www.onsemi.com

onsemi and **onsemi** and other names, marks, and brands are registered and/or common law trademarks of Semiconductor Components Industries, LLC dba "**onsemi**" or its affiliates and/or subsidiaries in the United States and/or other countries. **onsemi** owns the rights to a number of patents, trademarks, copyrights, trade secrets, and other intellectual property. A listing of **onsemi** product/patent coverage may be accessed at www.onsemi.com/site/pdf/Patent-Marking.pdf. **onsemi** reserves the right to make changes at any time to any products or information herein, without notice. The information herein is provided "as-is" and **onsemi** makes no warranty, representation or guarantee regarding the accuracy of the information, product features, availability, functionality, or suitability of its products for any particular purpose, nor does **onsemi** assume any liability arising out of the application or use of any product or circuit, and specifically disclaims any and all liability, including without limitation special, consequential or incidental damages. Buyer is responsible for its products and applications using **onsemi** products, including compliance with all laws, regulations and safety requirements or standards, regardless of any support or applications information provided by **onsemi**. "Typical" parameters which may be provided in **onsemi** data sheets and/or specifications can and do vary in different applications and actual performance may vary over time. All operating parameters, including "Typicals" must be validated for each customer application by customer's technical experts. **onsemi** does not convey any license under any of its intellectual property rights nor the rights of others. **onsemi** products are not designed, intended, or authorized for use as a critical component in life support systems or any FDA Class 3 medical devices or medical devices with a same or similar classification in a foreign jurisdiction or any devices intended for implantation in the human body. Should Buyer purchase or use **onsemi** products for any such unintended or unauthorized application, Buyer shall indemnify and hold **onsemi** and its officers, employees, subsidiaries, affiliates, and distributors harmless against all claims, costs, damages, and expenses, and reasonable attorney fees arising out of, directly or indirectly, any claim of personal injury or death associated with such unintended or unauthorized use, even if such claim alleges that **onsemi** was negligent regarding the design or manufacture of the part. **onsemi** is an Equal Opportunity/Affirmative Action Employer. This literature is subject to all applicable copyright laws and is not for resale in any manner. Other names and brands may be claimed as the property of others.



ON Semiconductor®

Strata Enabled NCV768X Automotive LED Tail Lights

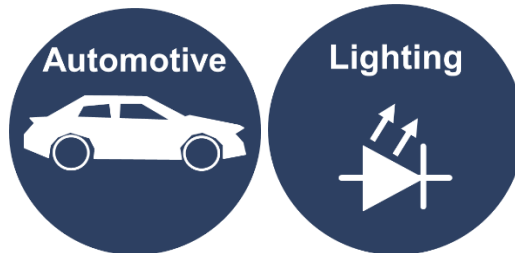


Table of Contents

INTRODUCTION.....	3
Device Features	3
Applications.....	3
USER GUIDE	4
Hardware Setup	4
User Interface	4
MISCELLANEOUS.....	7
VS and VDD lost.....	7
Simultaneous external and on-board LEDs	7
Daisy Chain	7

Introduction

The Strata NCV768X Automotive LED Tail Lights evaluation board provides an easy to use platform within the Strata Development Studio for the NCV7684 and NCV7685. Strata gives the developer access to any collateral, including datasheets, BOMs and schematics, as well as providing a user interface for easily evaluating the features and changing relevant registers of the NCV7684 and NCV7685. This document will provide important measurements taken for the hardware on this evaluation board.

Device Features

- 12 Common Current Programmable Sources up to 60 mA
- Independent PWM Duty Cycle Control for each Channel (NCV7685 only)
- Common PWM Duty Cycle Control via I2C
- Several duty cycle options for each variant
- Open LED String Diagnostics
- Single Resistor for Current Set Point
- 8 Bits I2C Interface with CRC8 Error Detection
- OTP Bank for Stand-Alone Operation (2 Configurations)
- Detection and Protection Against Open Load and Under-Voltage
- Over Temperature Detection and Protection

Applications

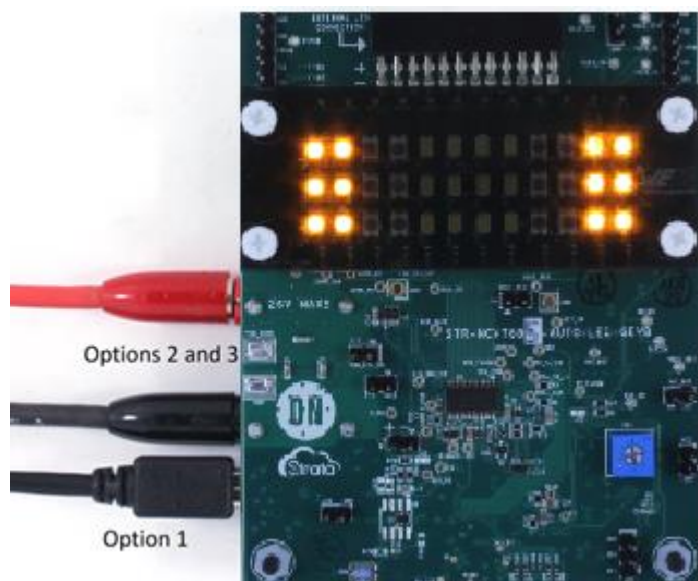
- Dashboard Applications
- Rear Combination Lamps (RCL)
- Daytime Running Lights (DRL)
- Fog Lights
- Center High Mounted Stop Lamps (CHMSL) Arrays
- Turn Signal and Other Externally Modulated Applications

User Guide

This section will explain how to use the Strata Enabled STR-NCV7684-AUTO-LED-GEVB and STR-NCV7685-AUTO-LED-GEVB in a step-by-step manner and will cover both the hardware required as well as how to use the User Interface (UI) in Strata. Please ensure that the latest version of Strata is installed before connecting to the board. The latest version can be downloaded from the ON Semiconductor [website](#).

Hardware Setup

There are three external input power supply options when using the STR-NCV768X-AUTO-LED-GEVB. The first hardware setup option is to use a mini USB connector (J33) on the bottom of the board. This USB connector will supply power to the LEDs as well as facilitate communication between Strata and the board. The other two hardware setup options are for users who wish to use an external supply for higher power applications the USB VBUS rail cannot provide. Use the banana plugs (J29 and J31) or the barrel connector (J30).



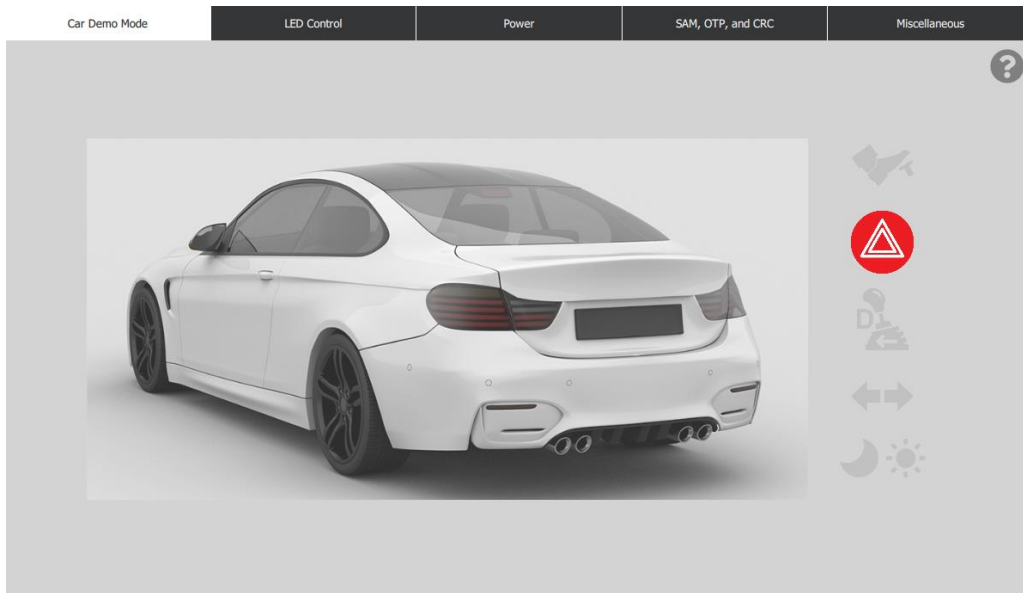
User Interface

The UI within the Strata app will allow the user to control and monitor the evaluation board without requiring other lab equipment or training. The steps below include the details on how to start the Strata application.

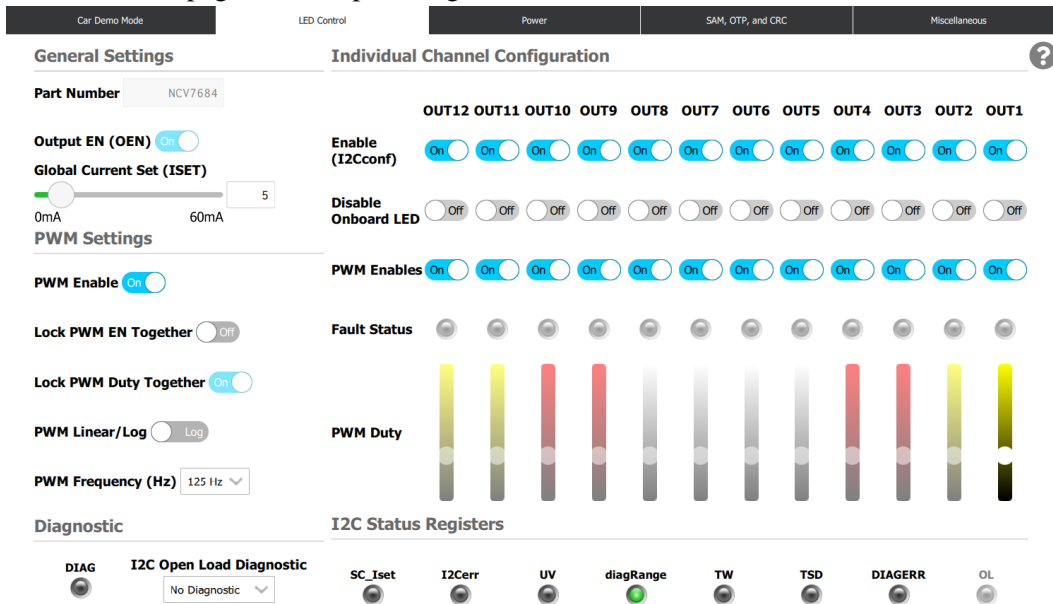
1. First, download and install the most recent version of Strata. It can be found [here](#).
2. Open the Strata app. Login and the home screen will appear.
3. The app will automatically detect the device and will bring up the UI for the board that is plugged in.
4. The round button with a question mark in the top right corner is the Help button, and it will show the user what everything on the UI is doing. See the help messages for more in depth descriptions of all the UI elements.

5. The first view that appears is the Car Demo Mode. The demo mode features buttons which control the LEDs similarly to the tail lights and headlights of a car. Some EVB models also have a light sensor installed to detect the ambient light, which will change the background light as well as enable the brake lights and headlights in dim lighting. For EVBs without the light sensor, the moon and sun buttons can be used to change the background lighting.

a.

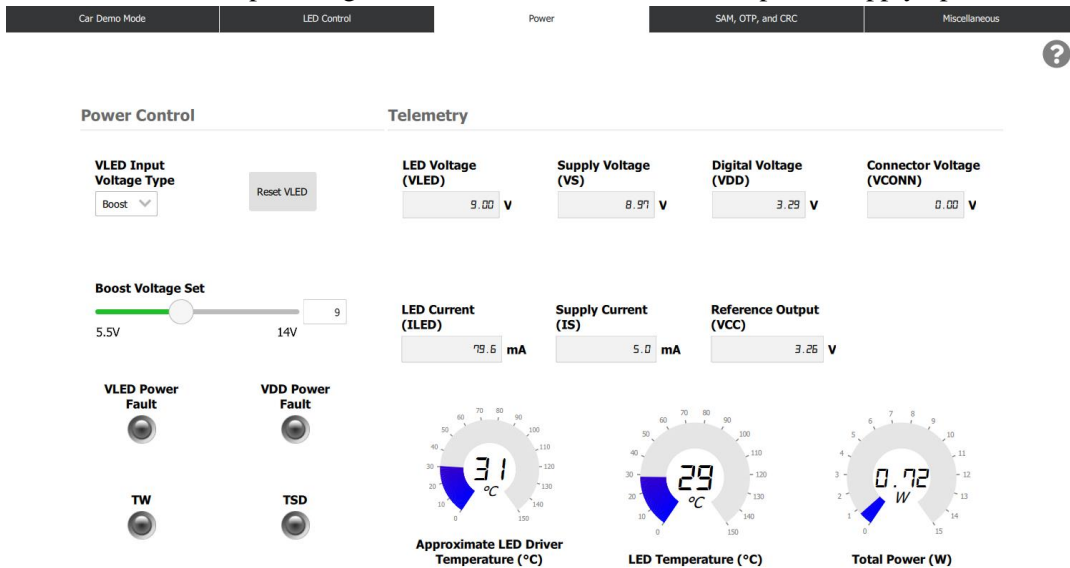


6. The “LED Control” view allows the user to control the LEDs in a more detailed manner. This view offers individual LED string control such as toggling the enable, toggling on-board switches, toggling PWM, and changing the PWM duty cycle. This view also offers global control of ISET current, PWM enable, linear/log PWM, PWM frequency, and locking PWM EN and PWM Duty cycle for all channels together. This view also allows the user to change the diagnostic mode. (**Note:** The NCV7684 and NCV7685 offer some differing control features on this page.) See help messages for more details.



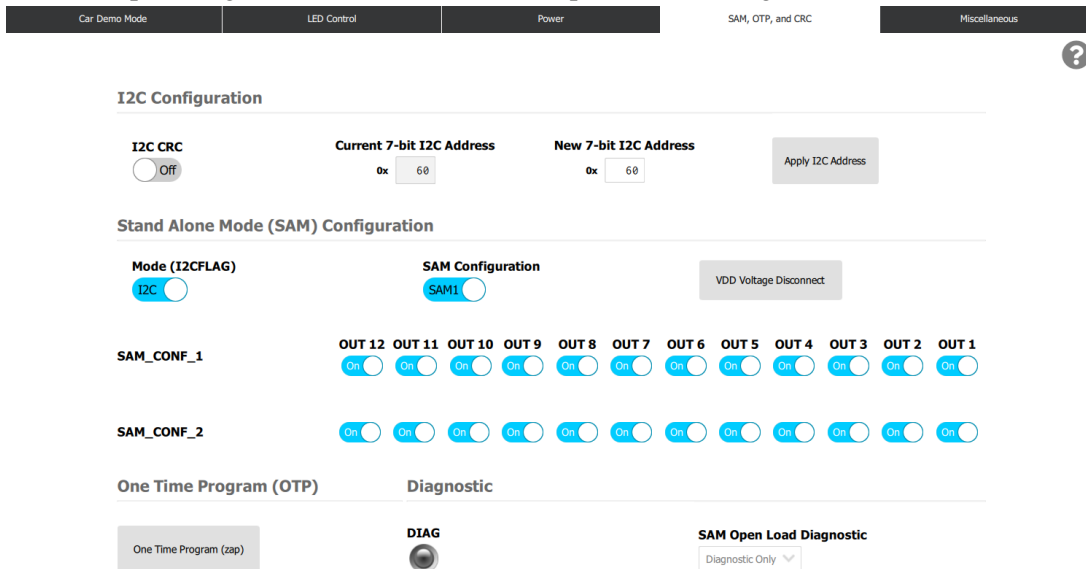
a.

- The “Power” view allows the user to control the VLED supply as well as displays relevant telemetry associated with the operation of the EVB. The “VLED Input Voltage Type” dropdown has options for “Boost”, “Buck”, and “Bypass” supply types. Changing the supply type will change the voltage slider according to the possible output voltages for that particular supply. If there is a fault on the VLED rail, such as a power supply going into OCP, then the user will have to use the “Reset VLED” button after fixing the setting that caused the OCP. See help messages for more information about the power supply options on this board.



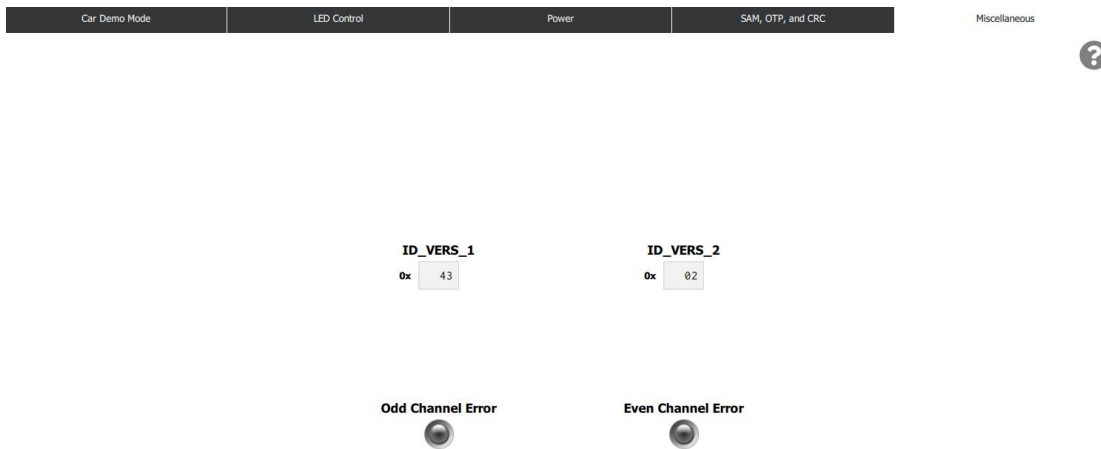
a.

- The “SAM, OTP, and CRC” view offers configuration of which I2C address to communicate with, configuration of the Stand Alone Mode (SAM) settings, and allows the user to One Time Program (OTP) the device. See the help messages for a more detailed description of these registers



a.

9. The “Miscellaneous” tab offers information about the identifiers for the LED driver installed on the EVB, as well as indicators about errors on odd/even LED channels.



a.

Miscellaneous

VS and VDD lost

In the event of losing both VS and VDD, the registers in the NCV7684/5 will be reset. This reset will cause the UI to be out of sync with the LED driver. Remove all power from the board including the USB cable to reset

Simultaneous external and on-board LEDs

The external LED connector is always connected to VLED, meaning external LEDs can be used in parallel with the on-board LEDs. This configuration will work depending the external LEDs that are connected but it is not recommended.

Daisy Chain

This board includes two on-board headers for use with the daisy chain feature of the NCV7684/5 to daisy chain multiple NCV768X. This interface has not been tested and is not recommended for use.

ON Semiconductor and the ON Semiconductor logo are trademarks of Semiconductor Components Industries, LLC dba ON Semiconductor or its subsidiaries in the United States and/or other countries. ON Semiconductor owns the rights to a number of patents, trademarks, copyrights, trade secrets, and other intellectual property. A listing of ON Semiconductor's product/patent coverage may be accessed at www.onsemi.com/site/pdf/Patent-Marking.pdf. ON Semiconductor is an Equal Opportunity/Affirmative Action Employer. This literature is subject to all applicable copyright laws and is not for resale in any manner.

The evaluation board/kit (research and development board/kit) (hereinafter the "board") is not a finished product and is as such not available for sale to consumers. The board is only intended for research, development, demonstration and evaluation purposes and should as such only be used in laboratory/development areas by persons with an engineering/technical training and familiar with the risks associated with handling electrical/mechanical components, systems and subsystems. This person assumes full responsibility/liability for proper and safe handling. Any other use, resale or redistribution for any other purpose is strictly prohibited.

The board is delivered "AS IS" and without warranty of any kind including, but not limited to, that the board is production-worthy, that the functions contained in the board will meet your requirements, or that the operation of the board will be uninterrupted or error free. ON Semiconductor expressly disclaims all warranties, express, implied or otherwise, including without limitation, warranties of fitness for a particular purpose and non-infringement of intellectual property rights.

ON Semiconductor reserves the right to make changes without further notice to any board.

You are responsible for determining whether the board will be suitable for your intended use or application or will achieve your intended results. Prior to using or distributing any systems that have been evaluated, designed or tested using the board, you agree to test and validate your design to confirm the functionality for your application. Any technical, applications or design information or advice, quality characterization, reliability data or other services provided by ON Semiconductor shall not constitute any representation or warranty by ON Semiconductor, and no additional obligations or liabilities shall arise from ON Semiconductor having provided such information or services.

The boards are not designed, intended, or authorized for use in life support systems, or any FDA Class 3 medical devices or medical devices with a similar or equivalent classification in a foreign jurisdiction, or any devices intended for implantation in the human body. Should you purchase or use the board for any such unintended or unauthorized application, you shall indemnify and hold ON Semiconductor and its officers, employees, subsidiaries, affiliates, and distributors harmless against all claims, costs, damages, and expenses, and reasonable attorney fees arising out of, directly or indirectly, any claim of personal injury or death associated with such unintended or unauthorized use, even if such claim alleges that ON Semiconductor was negligent regarding the design or manufacture of the board.

This evaluation board/kit does not fall within the scope of the European Union directives regarding electromagnetic compatibility, restricted substances (RoHS), recycling (WEEE), FCC, CE or UL, and may not meet the technical requirements of these or other related directives.

FCC WARNING – This evaluation board/kit is intended for use for engineering development, demonstration, or evaluation purposes only and is not considered by ON Semiconductor to be a finished end product fit for general consumer use. It may generate, use, or radiate radio frequency energy and has not been tested for compliance with the limits of computing devices pursuant to part 15 of FCC rules, which are designed to provide reasonable protection against radio frequency interference. Operation of this equipment may cause interference with radio communications, in which case the user shall be responsible, at its expense, to take whatever measures may be required to correct this interference.

ON Semiconductor does not convey any license under its patent rights nor the rights of others.

LIMITATIONS OF LIABILITY: ON Semiconductor shall not be liable for any special, consequential, incidental, indirect or punitive damages, including, but not limited to the costs of requalification, delay, loss of profits or goodwill, arising out of or in connection with the board, even if ON Semiconductor is advised of the possibility of such damages. In no event shall ON Semiconductor's aggregate liability from any obligation arising out of or in connection with the board, under any theory of liability, exceed the purchase price paid for the board, if any.

PUBLICATION ORDERING INFORMATION

LITERATURE FULLFILLMENT:

Literature Distribution Center for ON Semiconductor 19521 E.
32nd Pkwy, Aurora, Colorado 80011 USA

Phone: 303-675-2175 or 800-344-3860 Toll Free USA/Canada

Fax: 303-675-2176 or 800-344-3867 Toll Free USA/Canada

Email: orderlit@onsemi.com

N. American Technical Support:

800-282-9855 Toll Free USA/Canada

Europe, Middle East and Africa Technical Support:

Phone: 421 33 790 2910

ON Semiconductor Website:

<https://www.onsemi.com/>

Order Literature:

<https://www.onsemi.com/orderlit>

For additional information, please contact your local Sales Representative