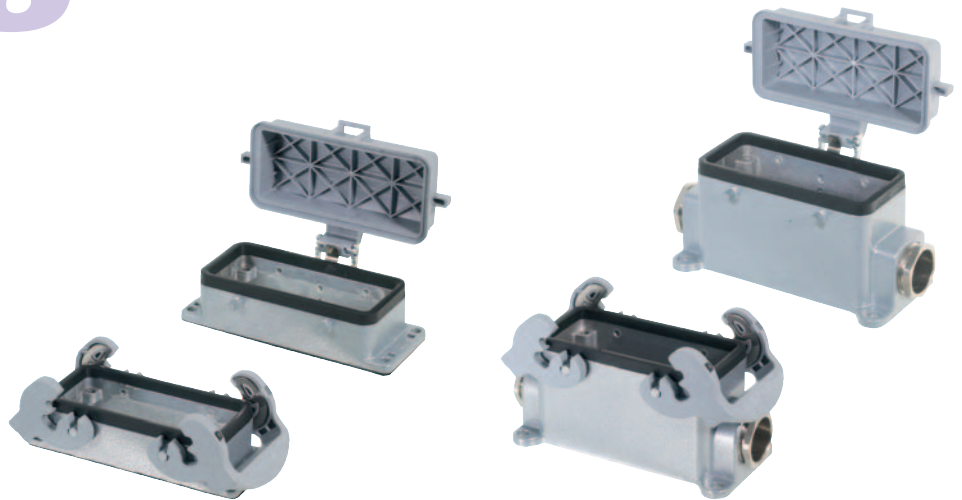


690 V bases, double locking lever

Size 16

revos BASIC



Open-bottom bases

Approvals:

Closed-bottom bases, 2 cable glands

Approvals:

Description	Type	M	Part No.	Std. Pack	Type	M	Part No.	Std. Pack
Aluminum housing, size 16, 690 V								
Open-bottom base, without cover	BAS GUT GA 16 69 A		72.320.1628.0	1				
Open-bottom base, with cover	BAS GUT GE 16 69 A		72.325.1628.0	1				
Closed-bottom base, 2xM25, without cover with cable gland IP54, → Ø ← 7.5 – 19 mm with threaded collar					BAS GUT GB 16 M25 69 A0	25	72.330.1635.0	1
Closed-bottom base, 2xM25, with cover with cable gland IP54, → Ø ← 7.5 – 19 mm with threaded collar					BAS GUT GB 16 M25 69 A1	25	72.330.1635.1	1
					BAS GUT GF 16 M25 69 A0	25	72.340.1635.0	1
					BAS GUT GF 16 M25 69 A1	25	72.340.1635.1	1
Technical data								
Material	Die cast aluminum alloy				Die cast aluminum alloy			
Surface	silicon-free				silicon-free			
Locking levers	Handle: Polyamide, UL94 V0; stainless steel V2A				Handle: Polyamide, UL94 V0; stainless steel V2A			
Gasket	NBR				NBR			
Degree of protection	with latched locking levers IP54				with latched locking levers IP54			
	with appropriate cable glands IP65				with appropriate cable glands IP65			
Temperature range	-40 – +120 °C				-40 – +120 °C			
Dimensions								
Accessories								
Cable gland IP68, plastic material, gray					Connection range 7 – 16 mm	25	Z5.507.1553.0	10
Cable gland IP68, nickel-plated brass					Connection range 11 – 18 mm	25	Z5.507.1521.0	10

For size 16 contact inserts see the product matrix on page 1040

For size 16 contact inserts see the product matrix on page 1040