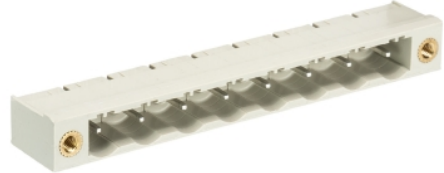


Data sheet

Commercial Art.No.: 25.398.2653.0

PCB pin header 8413 S / 6 WF OB

PCB pin header with pin header, connection method depends on used socket part , 6 poles, pitch: 7.62 mm, type of packing: carton, color: grey



Certificates / Approvals



Technical data

General

Modular spacing	7.62 mm
Soldering process	Wave soldering
Packaging	Carton
Number of poles	6
Number of levels	1
Marking	No
Fastening	Flange
Mating direction towards (circuit) board	180°

Technical data

Rated current	12 A
Overvoltage Category I	1000 V
Overvoltage Category II	690 V
Overvoltage Category III	400 V
Rated impulse voltage	6 kV

Technical Data UL/CSA

Voltage UL	300 V
Current field wiring	15 A
Current factory wiring	15 A
Voltage CSA	300 V
Current CSA	15 A

Other

Type of insulation material	Thermoplastic
Color	Grey
Height	8.4 mm
Length	56.14 mm
Depth	12 mm
Material contact base	CuZn
Material contact surface	Sn

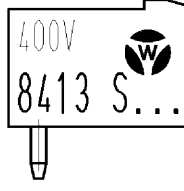
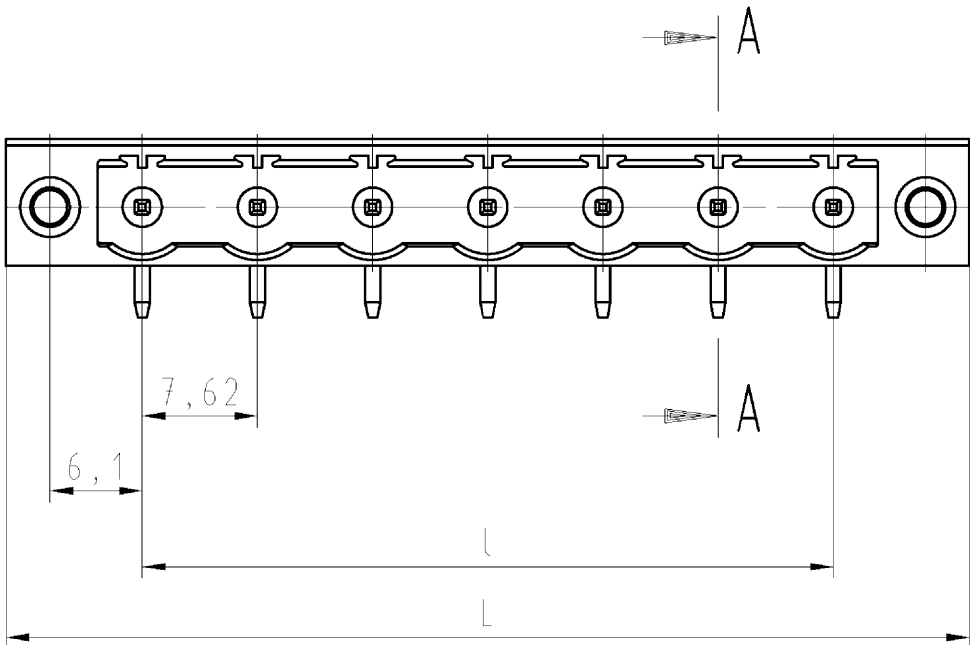
Classification

ECLASS 8.1	27440402
------------	----------

ETIM 7.0	EC002637
ETIM 6.0	EC002637
ETIM 5.0	EC002637
ETIM 4.0	EC002637

Product compliance

ROHS conformity status	Compliant/Exempted
ROHS exceptions	III-6(c)
REACH-SVHC conformity status	Duty-To-Declare
REACH-SVHC substances	Lead
REACH-SVHC CAS numbers	7439-92-1



Weitergabe sowie Vervielfältigung dieses Dokuments, Verwertung und Mitteilung seines Inhalts sind verboten, soweit nicht ausdrücklich gestattet. Die Reproduktion, Distribution und Utilization of this document as well as the communication of its contents to others without express authorization is prohibited.

Schnitt A-A
section A-A

gezeichnete Ausführung:
7-polig
gezeichnete Ausführung:
7-polig

Weitere Daten siehe Katalog
further data see catalog

Farbe/colour	.F
grau /grey	.0
schwarz/black	.1
grün/green	.7

Artikel-Nr. part number	Pol-Z pole	L	l	Typ type
25.398.2253.F	2	25,66	7,62	8413 S/ 2WF OB
25.398.2353.F	3	33,25	15,24	8413 S/ 3WF OB
25.398.2453.F	4	40,90	22,86	8413 S/ 4WF OB
25.398.2553.F	5	48,52	30,48	8413 S/ 5WF OB
25.398.2653.F	6	56,14	38,10	8413 S/ 6WF OB
25.398.2753.F	7	63,76	45,72	8413 S/ 7WF OB
25.398.2853.F	8	71,38	53,34	8413 S/ 8WF OB
25.398.2953.F	9	79,00	60,96	8413 S/ 9WF OB
25.398.3053.F	10	86,62	68,58	8413 S/ 10WF OB
25.398.3153.F	11	94,24	76,20	8413 S/ 11WF OB
25.398.3253.F	12	101,86	83,82	8413 S/ 12WF OB

Tolerierung nach DIN 7167/Tolerance system acc. to DIN 7167. (This DIN-standard describes the envelope principle. According to the envelope principle the deviations of form and parallelism are limited by the size tolerances). ja/yes Stoffverbots- und Deklarationsliste nach UU-TQM-05/03 ist einzuhalten. Conformity with Wieland document UU-TQM-05/03 (list of prohibited / declarable hazardous substances) to be declared!

Freitoleranz nach DIN ISO 2768 - m CAD - Zeichnung, keine manuellen Änderungen I.Verwendung: - Blatt: 1 von 1
General tolerance CAD - drawing, no manual modifications allowed First Use: Sheet: 1 of 1

Index	Datum / Blatt Date / Sheet	Werkstoff/Material	2011	Tag/Date	Name	Zeichnung Nr./Drawing No.	Index
			gezeichnet drawn	29.11.	Schmitt J.		
Änderung/Revision	Maßstab/Scale	Vol.	mm ³	Öff./Surf.	mm ²	Ersatz für/Replacement for: -	Maße in mm/Dimensions are in mm
		wieland Elektrische Verbindungen		Type	Benennung/Tittle		
				Typ	LP_STIFTLEISTE		
				8413 S/..	Rastermaß/pitch 7,62		
				WF OB	PCB header		