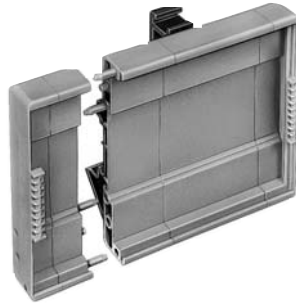


# Electronic housings WEB housing system

# housing system

### System advantages:

- Open modules can be snapped together to any length
- Complete custom design possible
- The modular design enables quick assembly
- High torsional rigidity due to the firm interconnection of the individual elements
- Can be snapped onto all 32/35 DIN rails using the universal foot



### Material:

Housing: PA 6 GU30 UL 94-HB

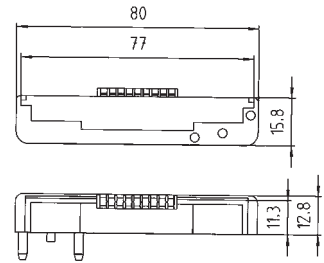
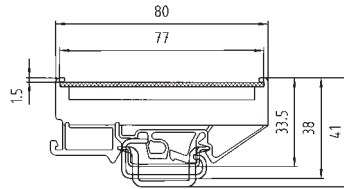
Foot: PA 66 UL 94-V2

## WEB 1002

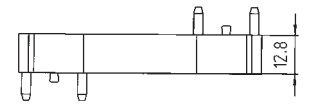
Dimensions (mm): W x H x D

Variable x 80 x 33.5

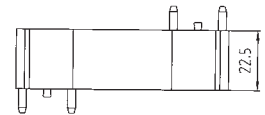
Individual parts	Type	Part No.	Std. Pack
<b>1. End cover with marking tag carrier</b>	12.8 mm wide	01.001.6493.0	50
<b>2. Middle section of housing</b>	12.8 mm wide	01.001.6553.0	50
<b>3. Middle section of housing</b>	22.5 mm wide	01.001.6653.0	50
<b>4. Middle section of housing</b>	44.8 mm wide	01.001.6753.0	50
<b>5. Universal foot</b>	23 mm wide	05.584.8853.0	50
<b>5. Universal foot</b> (overall width from 70.4 mm and wider)	68 mm wide	05.584.8953.0	50
<b>Accessories</b>			
Mounting rail 35, DIN rail 7.5 mm high L = 2 m	35 x 27 x 7.5 EN 50022	98.300.0000.0	1
Mounting rail 35, DIN rail 15 mm high L = 2 m	35 x 24 x 15 EN 50022	98.360.0000.0	1
Mounting rail 32, G-rail L = 2 m	9006 EN 50035 G-32	98.190.0000.0	1
PCB (not included)	see drawing for dimensions		
End clamp, Polyamide 8 mm wide TS 35	9708/2 S 35	Z5.522.8553.0	100
End clamp, Polyamide 10 mm wide U-Foot	WE 1/U	Z5.523.5753.0	100
Marking tag, unmarked	9003 C	04.242.0850.0	500
Marking tag, marked	9003 CB	04.842.0850.0	500



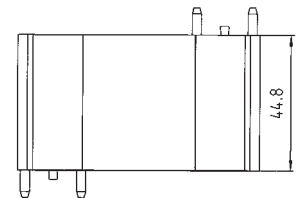
Width 12.8 mm 01.001.6493.0 50



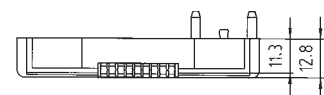
Width 12.8 mm 01.001.6553.0 50



Width 22.5 mm 01.001.6653.0 50

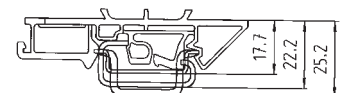


Width 44.8 mm 01.001.6753.0 50



01.001.6493.0 50

### Universal foot



Width 23 mm 05.584.8853.0 50

Width 68 mm 05.584.8953.0 50

(overall width from 70.4 mm)