



## Euro-Style Terminal Blocks

### TYPE 4010-B /4011-B (-HDS)

18 mm and 18.3 mm spacing - 2 and 3 poles

Inventory Check



RoHS WEEE Pb free compliant

### Description

The porcelain molding for these terminal blocks was designed to provide excellent resistance to high temperatures and the ability to allow high current voltage ratings.

Series 401-B can accept up to 61 amperes at 500 volts because of its 18 mm spacing and heavy duty metal components. 4010-B: recommended mounting hardware: M5 cheese head screw (#10-24 fillister head screw), 4011-B: recommended mounting hardware: M4 cheese head screw (#8-32 fillister head screw)

- Ceramic Terminal Block
- High Profile, Heavy Duty

### Technical Data

**Center to Center Spacing:** 3 poles: 18 mm (0.71 in.) 2 poles: 18.3 mm (0.72 in.)

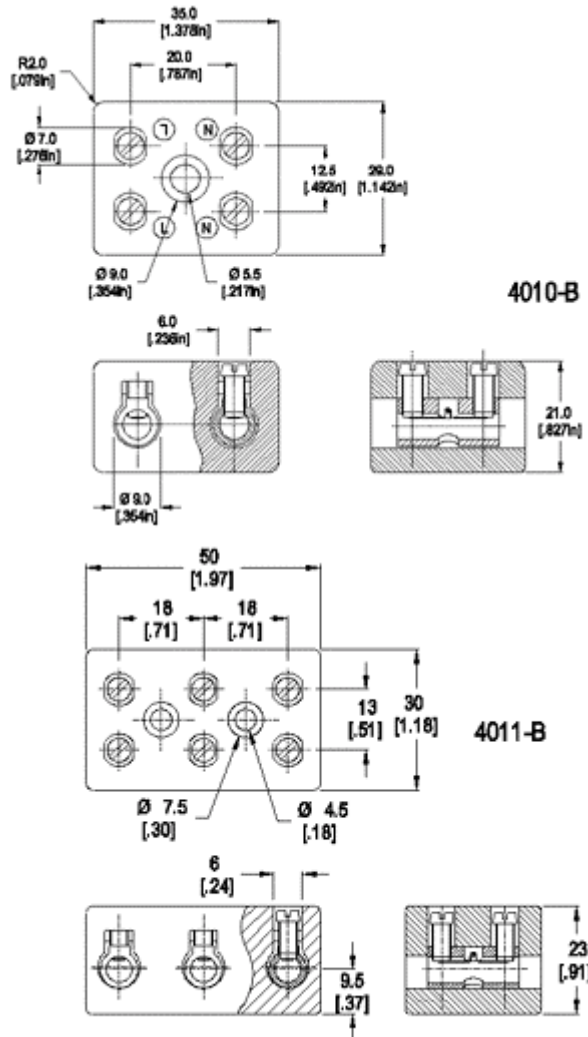
**Nominal Cross Section:**  
10 mm<sup>2</sup> (15498 mils<sup>2</sup>)

**Wire Stripping Length:** 9 mm (0.35 in.)

(maximum load at 40°C (104°F) ambient temperature)

**Recommended operating**

**Voltage:** 500 V



Dimensions: mm (in.)

Length of Connector (L)

L = 35 (1.38) 2 pole / 50 (1.97) 3 pole

When locating connector, allow 0.5 mm clearance around it for process-induced variations.

## Approval Information

UL File No. E69841 

Rating	Current(A)	Voltage(V)	Application group	AWG
UL	50	600	B,C,D	14-8

### Screw Tightening Torque:

10

### International Approvals:



---

## Material

**Molding:** Unglazed porcelain KER 111, DIN 40685, color white

**Temperature upper limit:** 200°C (392°F)

**Terminal Body:** Nickel plated brass

**Wire Protector:** Stainless steel

**Screw:** M4 or M5, Zinc plated blue passivated, steel substrate

---

**Item** 4010-B /4011-B (-HDS)

### Options

- G05: Gold Plating (5 micro inches)
- G30: Gold Plating (30 micro inches)
- S30: Silver Plating (30 micro inches)

**Ordering Note:** Plated component: terminal body

### Accessories

401      POLES:      WIRE PROTECTOR:  
2 poles: 0 3 poles: 1      with: - HDS  
                       -B            -