



Eurostyle Screw Terminal Strips for Panel / Chassis Mounting

TYPE 323 (-HDS)

10 mm spacing - 1 to 12 poles



Distributor Stock Check



RoHS WEEE Pb free compliant

Description

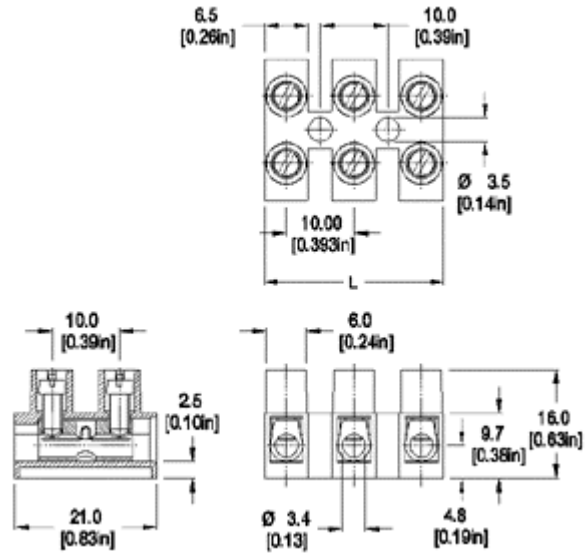
- standard version
- Recommended mounting hardware: M3.5 pan head screw (#6-32 pan head screw) or similar sized sheet metal screw, self-tapping screw or rivet.

Technical Data

Center to Center Spacing: 10 mm (0.394 in.)
Nominal Cross Section: 2.5 mm² (3874 mils²)
Wire Stripping Length: 6 mm (0.25 in.)

Application

The panel and chassis mounted series are ideal for connecting electrical control panels to external power sources, signal sources, other electrical panels and electrical loads of many types and sizes. The electrical panel's or electrical enclosure's internal components and circuitry are connected to their appropriate external electrical circuitry through these terminal blocks. The screw tightened connections result in high contact forces thus promoting safe wire secureness and retention, low electrical resistance and safe reusable connections. All wire retention screws are captive in their towers and they cannot fall out during transportation, installation and use. Wire protectors are available to protect small gauge stranded wires from screw damage. These terminal strips can be completely enclosed within the enclosures or be placed at an enclosure opening with one side accessible for external cabling and the other for internal wiring. They can be specially marked to your specifications.



Dimensions: mm (in.)

Length of Connector (L)

L = No. of Poles x Center to Center Spacing - 3.5 mm

When locating connector, allow 0.5 mm clearance around it for process-induced variations.

Approval Information

UL File No. E69841
 CSA File No. LR24322

Rating	Current(A)	Voltage(V)	Application group	AWG
UL	30	300	B, D	20-10
CSA	25	300	B, D, E	26-10

Screw Tightening Torque:

UL: 4.5 lbf·in
 CSA: 0.51 Nm

International Approvals:



Material

