



Surface Mount Terminal Blocks



TYPE 971-SLR-SMD

5 mm spacing - 2 to 12 poles



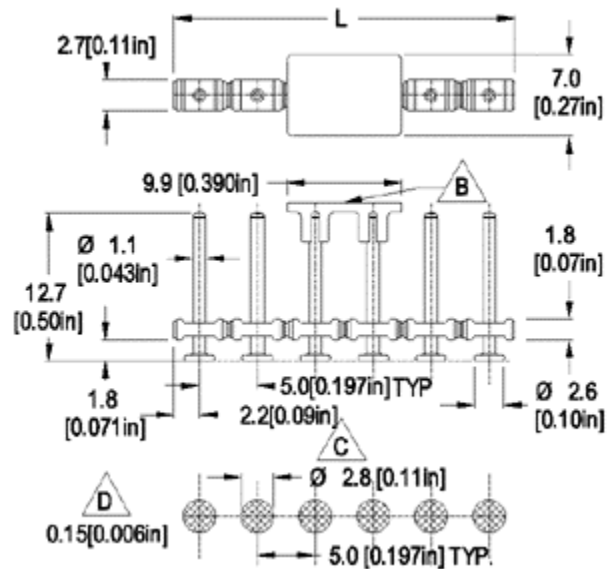
Distributor Stock Check



971-SLR-SMD



RoHS WEEE Pb free compliant



Dimensions: mm (in.)

Length of Connector (L)

L = No. of Poles x Center to Center Spacing - 0.6 mm

(B) Removable vacuum pick surface

(C) Recommended pad footprint

(D) Stencil thickness

When locating connector, allow 0.5 mm clearance around it for process-induced variations.

Description

US Patent # 6.224.399 B1

Canadian Patent # 2307922

Material will handle RoHS complying reflow temperatures without deforming or melting.

- Pinstrip
- Plug-In Direction Perpendicular to PCB and Wire Entrance Parallel to PCB when plugged with 950-NAF-DS, 950-NLFL-DS, 958-NLFL-DS, 950-FL-DS, 950-T-FL-DS, 115-F-111, 115-F-118 and 115-F-211
- Excellent coplanarity better than 0.15 mm
 Typical resistance to vertical pull off force per pin 10 kg (depending on soldering process).
 Typical resistance to horizontal peel off force per pin 3 kg (depending on soldering process).

Approval Information

UL File No. E69841

Rating	Current(A)	Voltage(V)	Application group	AWG
UL	10	300	B	
CSA				

Technical Data

Center to Center Spacing: 5 mm (0.197 in.)

* CSA approvals are pending.
Recommended current 10 A recommended voltage 300 V

Application

You can now convert one more component on your board to a genuine surface mount. You can increase packaging accuracy and component density, use both sides of the PCB, reduce and eliminate set-up costs and simplify and streamline your processes. The patented 971-SLR-SMD "nail head" pin design ensures a secure and reliable contact with the printed circuit board. The 0.15 mm co-planarity tolerance of this pin strip allows reliable soldering to PCB approaching zero defects for this characteristic and its effects. Plastic thermo resistant caps ensure automated pick & place-ability for both odd and even pole versions. (Consult our "Tape & Reel Data" table within our Technical Information section for details.

Material

Molding: PA6T Polyamid, 30% GF (glass fiber reinforced), self extinguishing UL 94, V-0, color black

Temperature limits:

Short Time: 240°C (464°F)

Continuous: RTI 105°C (221°F)

Low Limit: -40°C (-40°F)

Comparative Tracking Index: CTI > 600

Oxygen Index Rating: 35%

Average weight: 0.04 gram,

Solder Pin: Ø 1 mm (0.04 in.), Tin plated copper alloy

Item

971-SLR-SMD

Options

- G05 Gold Plating (5 micro inches)
- G30 Gold Plating (30 micro inches)
- S30 Silver Plating (30 micro inches)
- TR Tape and Reel Assembly
- PCP Removable Pick Cap

Note: Plated component: solder pin

Accessories

971-SLR-SMD/