

Surface Mount Terminal Blocks

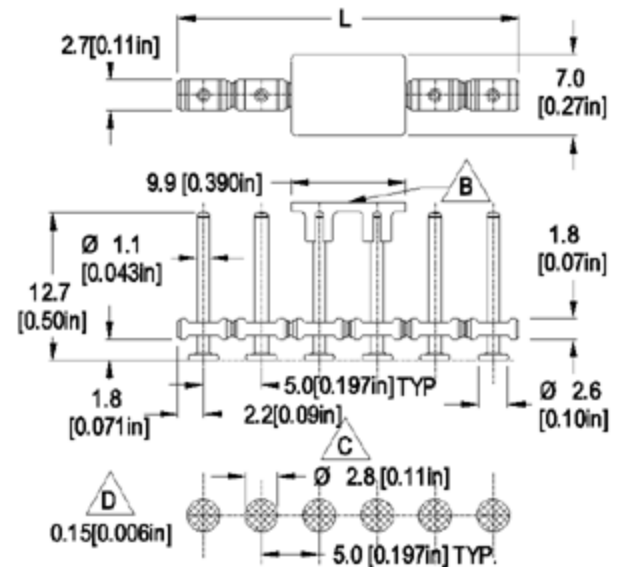


TYPE 971-SLR-SMD

5mm spacing - 2 to 12 poles



RoHS WEEE Pb-free compliant



Dimensions: mm (in.)

Length of Connector (L)

L = No. of Poles x Center to Center Spacing - 0.6 mm

(B) Removable vacuum pick surface

(C) Recommended pad footprint

(D) Stencil thickness

When locating connector, allow 0.5mm clearance around it for process-induced variations.

Description

US Patent # 6,224,399 B1

Canadian Patent # 2,307,922

Material will handle RoHS complying reflow temperatures without deforming or melting.

- Pinstrip
- Plug-In Direction Perpendicular to PCB and Wire Entrance Parallel to PCB when plugged with 950-NAF-DS, 950-NLFL-DS, 958-NLFL-DS, 950-FL-DS, 950-T-FL-DS, 115-F-111, 115-F-118 and 115-F-211
- Excellent co-planarity better than 0.13mm
- Typical resistance to vertical pull off force per pin: 10kg (depending on soldering process)
- Typical resistance to horizontal peel off force per pin: 3kg (depending on soldering process)

Technical Data

Center to Center Spacing: 5mm (0.197 in.)

Approval Information

UL File No.E69841



CSA File No.LR24322



Rating	Current(A)	Voltage(V)	Application group	AWG
UL	10	300	B	
CSA	10	300	B	

Application

You can now convert one more component on your board to a genuine surface mount. You can increase packaging accuracy and component density, use both sides of the PCB, reduce and eliminate set-up costs and simplify and streamline your processes. The patented 971-SLR-SMD "nail head" pin design ensures a secure and reliable contact with the printed circuit board. The 0.13mm co-planarity tolerance of this pin strip allows reliable soldering to PCB approaching zero defects for this characteristic and its effects. Plastic thermo resistant caps ensure automated pick and place-ability for both odd and even pole versions.

Material

Molding: PA6 T Polyamid, 30% GF (glass fiber reinforced), self extinguishing UL 94, V-0, color black

Temperature limits:

Short Time: 240°C (464°F)

Continuous: RTI 105°C (221°F)

Low Limit: -40°C (-40°F)

Comparative Tracking Index: CTI > 600

Oxygen Index Rating: > 35%
