



**Screw Connectors for Printed Circuit Boards**

**TYPE 970-HENO (-DS)**

5 mm spacing - 2 to 12 poles



Distributor Stock Check



RoHS WEEE Pb free surface compliant

**Description**

Type 970-HENO (-DS) terminal block has been specially designed to allow effective potting of PC boards. The molding design prevents seepage of the potting material into the wire clamping area up to 14 mm (0.55 in.) from the board.

- High clearance above PCB
- Wire entrance parallel to PC Board

**Technical Data**

**Center to Center Spacing:** 5 mm (0.197 in.)

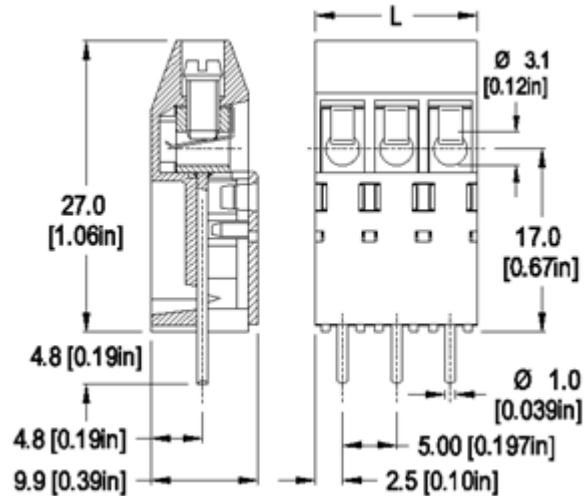
**Nominal Cross Section:**

2.5 mm<sup>2</sup> (3874 mils<sup>2</sup>)

**Wire Stripping Length:** 6.5 mm (0.26 in.)

**Recommended Hole Diameter in PC Board:**

1.3 mm (0.051 in.)



Dimensions: mm (in.)

Length of Connector (L)

L = No. of Poles x Center to Center Spacing

**When locating connector, allow 0.5 mm clearance around it for process-induced variations.**

**Approval Information**

UL File No.E69841

CSA File No.LR24322

Rating	Current(A)	Voltage(V)	Application group	AWG
UL	20	300	B,D	22-12
CSA	15	300	B,D,E	22-10

\* Version DS is CSA certified for 26-10 AWG.  
UL: 24-26 AWG range for factory wiring only.

**Screw Tightening Torque:**

UL: 4.5 lbf·in

CSA: 0.51 Nm

**Rated Impulse Withstand Voltage:** 2500 V

**Material**

**Molding:** Polyamide, self extinguishing UL 94, V-0, color grey

**Temperature limits:**

**Short Time:** 140°C (284°F)

**Continuous:** RTI 105°C (221°F)

**Low Limit:** -40°C (-40°F)

**Comparative Tracking Index:** CTI > 600

**Oxygen Index Rating:** 32%

**Terminal Body:** Tin plated copper alloy

**Wire Protector:** Tin plated copper alloy

**Screw:** M3, Slotted head, zinc plated blue passivated, steel

substrate  
**Solder Pin:** Ø 1.0 mm (0.04 in.), Tin plated copper alloy

---

**Item**                      **970-HENO (-DS)**

**Options**

- CN: Consecutive Numbering (hot stamped numbers)
  - SM: Special Marking (please provide sketch)
  - PS: Clear Chromate Passivated, zinc plated, Steel Screws
  - WG: Wire Guide
  - G05: Gold Plating (5 micro inches)
  - G30: Gold Plating (30 micro inches)
  - S30: Silver Plating (30 micro inches)
  - XXMM: Longer solder Pins up to 61 mm (2.4 in.)
- Protruding length of pins, in millimeters:
- BS: Copper Alloy Screw

**Note:** Plated component: terminal body

**Accessories**

	WIRE PROTECTOR: <u>with: - DS</u>	POLES: <u>02 to 12</u>
<b>970-HENO</b>	/	