

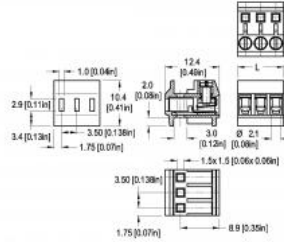


PLUG-IN SCREW CONNECTOR SYSTEM FOR PRINTED CIRCUIT BOARDS

**930-FL (-DS)**

3.50 mm (0.138 in) Spacing - 2 - 24 poles

[Print this page](#)



Dimensions: mm (in.)

Length of Connector (L)

ZOOM L = No. of Poles x Center to Center Spacing

[distributor stock check](#)

[additional photos](#)

[view 3d model](#)

TECHNICAL INFORMATION

APPROVAL INFORMATION

PLUGS WITH

HOW TO ORDER

**Description**

Plug

**Technical Data**

**Center to Center Spacing:** 3.5 mm (0.138 in.)

**Nominal Cross Section:** 0.75 mm<sup>2</sup> (1162 mils<sup>2</sup>)

**Wire Stripping Length:** 5 mm (0.197 in.)

**Bill of Materials**

**Molding :** Polyamide, self extinguishing UL 94, V-0

**Color :** grey

**Temperature limits :** Short Time : 140 °C (284 °F)

Continuous : RTI 105 °C (221 °F)

Low Limit : -40 °C (-40 °F)

**Comparative Tracking Index :** CTI ≥ 600 V

**Oxygen Index Rating :** 32%

**Terminal Body:** Nickel plated copper alloy

**Wire Protector:** Nickel silver

**Contact Spring:** Tin plated copper alloy

**Screw:** M2 Slotted head, zinc plated blue passivated, steel substrate

**Application**

This can be plugged with the 931-SLS. Entry of the pin can be on top side or on the bottom of these plugs. You can stack the plug on top of each other when used with extra long pins on the 931-SLS strips.



**Visual Description**

RoHS WEEE Pb free surface compliant




**Approval Information**

UL File No. [E69841](#) | CSA File No. [LR24322](#)

	TYPE (Spacing)	Current (A)	Voltage (V)	Application Group	AWG	Screw Tightening Torque
	930-FL (-DS) 3.5 mm	6	300	B	30-18	2.0 lbf·in
	930-FL (-DS) 3.5 mm	6	300	B	30-18	0.2 Nm

**Alternative Approval Information**

UL File No. [E69841](#) | CSA File No. [LR24322](#)

	TYPE (Spacing)	Current (A)	Voltage (V)	Application Group	AWG	Screw Tightening Torque
	932-FL (-DS) 7.0 mm	6	300	B	30-18	0.2 Nm

**International Approval Information**

Rated Impulse Withstand Voltage : 2500 V

**Plug-In Direction Perpendicular to PCB and Wire Entrance Parallel to PCB**



**TYPE 931-SLR-SMD-1.3**  
3.50 mm spacing - 02 - 16 poles



**TYPE 931-SLR-THR**  
3.50 mm spacing - 02 - 16 poles



**TYPE 931-SLR-THR-1.1**  
3.50 mm spacing - 02 - 16 poles



**TYPE 931-SLR-THR-1.3**  
3.50 mm spacing - 02 - 16 poles



**TYPE 931-SLS**  
3.50 mm spacing - 2 - 16 poles

**Plug-In Direction and Wire Entrance Perpendicular to PCB**



**TYPE 931-FST**  
3.50 mm spacing - 2 - 16 poles

**Please fill in the How to Order box**

- Request Sample                      Quantity
- Request Quote                         Quantity

**930-FL**

Wire protector:

Poles:

**OPTIONS:**

- CN: Consecutive Numbering (hot stamped numbers)
- FST: 931-FST pinstrips assembled to plug
- G05:;ld Plating (5 micro inches)
- G30:;ld Plating (30 micro inches)
- S30: Silver Plating (30 micro inches)
- SLS: 931-SLS Pinstrips assembled to Plug
- SM: Special Marking (please provide sketch)

**Accessories**

[BST Self Adhesive Marking Strips. Consecutively numbered.](#)

[LST Single Pins.](#)

ADD TO CART