



Surface Mount Terminal Blocks



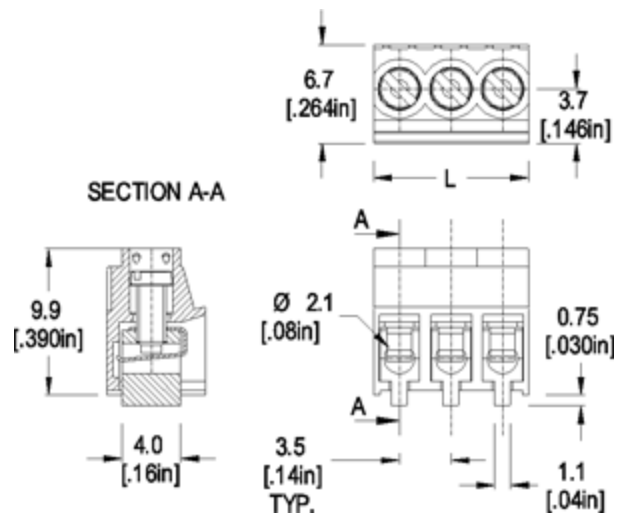
**TYPE 930-D-SMD (-DS)**  
3.5 mm spacing - 2 to 12 poles



Distributor Stock Check



RoHS WEEE Pb free compliant



Dimensions: mm (in.)

Length of Connector (L)  $L = \text{No. of Poles} \times \text{Center to Center Spacing (A)}$   
Center Stencil Thickness 0.15 mm (0.006 in.)  
Heat Defection Temp of molding 280°C @ 264 psi

**When locating connector, allow 0.5 mm clearance around it for process-induced variations.**

## Description

The floating terminal contacts ensure total co-planar adaptability to the surface of the PCB. This eliminates any problems related to irregularities of PCB surface. The 930-D-SMD (-DS) product is designed for re-flow process. It is supplied with a pick disc and sent out in tape and reel packaging.

- Floating Terminal Body
- Wire entrance parallel to PC Board

## Technical Data

**Center to Center Spacing:** 3.5 mm (0.138 in.)

## Approval Information

UL File No. E69841

Rating	Current(A)	Voltage(V)	Application group	AWG
UL	10	150	B	26-16
CSA	10	150	B	26-16

## Screw Tightening Torque

**Nominal Cross Section:**1 mm<sup>2</sup> (1550 mils<sup>2</sup>)**Wire Stripping Length:** 5 mm (0.197 in.)**Screw Tightening Torque:**

UL: 2.0 lbf·in

CSA: 0.2 Nm

**Application**

You can now convert one more component on your board to a genuine surface mount. You can increase packaging and component density, use both sides of the PCB, reduce and eliminate set-up costs and simplify and streamline your processes. This terminal block features an integrated pick area that allows this product to be picked-and-placed without any additional changes to your process. Its floating terminal bodies compensate for irregularities (non planarity and bumps) on the printed circuit board and thus promote high first pass yields and a low rate of open circuits. The same feature eliminates CTE mismatch with the PCB and thus promotes excellent in field reliability and the successful passing of thermal cycling testing.

**Material****Molding:** PA6T66 Polyamide, self extinguishing UL 94, V-0, color black**Temperature limits:****Short Time:** 260°C (500°F)**Continuous:** RTI 110°C (230°F)**Low Limit:** -40°C (-40°F)**Comparative Tracking Index:** CTI > 600**Oxygen Index Rating:** >35%**Average weight:** 0.5 gram per pole,**Screw:** M2, Slotted head, tin plated copper alloy**Terminal Body:** Tin plated copper alloy**Wire Protector:** Nickel silver**Item****930-D-SMD (-DS)****Options**

- CN Consecutive Numbering (hot stamped numbers)
- SM Special Marking (please provide sketch)
- G05 Gold Plating (5 micro inches)
- G30 Gold Plating (30 micro inches)
- S30 Silver Plating (30 micro inches)
- TR Tape and Reel Assembly
- PCP Removable Pick Cap

**Note:** Plated component: terminal body**Ordering Note:** See download PDF for complete tape and reel assembly specifications**Accessories****930-D-SMD**WIRE PROTECTOR:  
with: - DS

/

POLES:  
2 to 12