



### Ceramic Terminal Blocks

#### TYPE 560-K4DF-V2A

22.5 mm spacing - 2 poles

Inventory Check



RoHS WEEE Pb free surface compliant

### Description

Series 560 ceramic terminal blocks offer a variety of models for explosion-proof and high temperatures applications. The 560-K4DF-V2A is supplied with all stainless steel metal components and is able to resist up to 500°C (932°F).

These terminals comprise of a glazed steatite mount and two riveted flat-type screw terminals secured to prevent them from twisting, similar to DIN 41000, with binding clip C or D and spring washers B DIN 127. The blocks may either be used rail mounted or independently. The base has a longitudinal slot at the bottom for non-twist securing on mounting rails 16 mm x 3 mm (0.63 x 0.12 in.). The surfaces next to the screw-fixing hole can be used for marking purposes.

A 17 mm wide by 2 mm high slot has been molded into the base of each terminal block. This slot can accommodate a suitably shaped rail on the mounting surface to allow securing the block and preventing possible movement caused during the tightening of the screw during the wiring operation.

A variety of other hardware components are available to meet other wiring needs.

Recommended mounting hardware: M4 pan head screw (#8-32 pan head screw).

- Ceramic Terminal Block for high temperature applications
- With Clamping Screws
- With Binding Clip "D"
- With Lock Washers

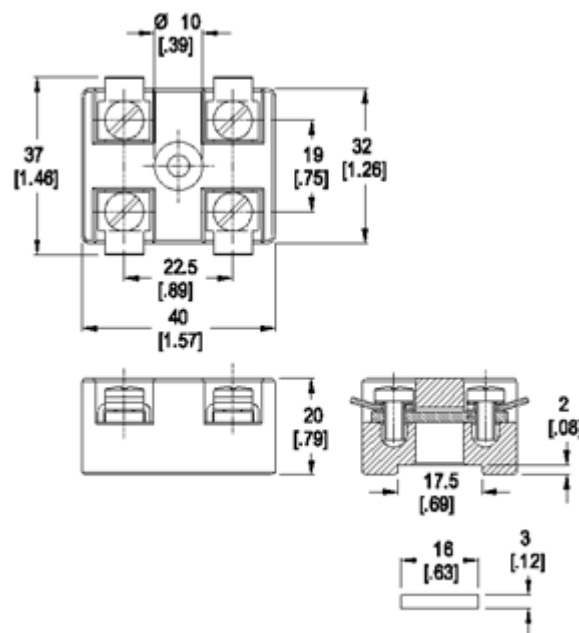
### Technical Data

**Center to Center Spacing:** 22.5 mm (0.886 in.)

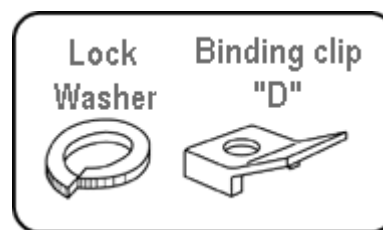
**Nominal Cross Section:**

2.5 mm<sup>2</sup> (3874 mils<sup>2</sup>)

**Wire Stripping Length:** 8 mm (0.31 in.)



Dimensions: mm (in.)



Hardware Options (1) Lock Washer (2) Binding clip "D"

**When locating connector, allow 0.5 mm clearance around it for process-induced variations.**

### Approval Information

UL File No.E69841



CSA File No.LR24322



Rating	Current(A)	Voltage(V)	Application group	AWG
UL	20	300	B,C	20-12
UL	5	600	D	20-12
CSA	25	300	B,C	20-12

**Screw Tightening Torque:**

20

**International Approvals:**




---

**Material**

**Molding:** Steatite KER 220, DIN 40685, color white

**Temperature upper limit:** 500°C (932°F)

**Terminal Body:** Stainless steel

**Screw:** M4, Stainless steel

**Lock Washer:** Stainless steel

**Binding Clip:** Stainless steel

---

**Item**

**560-K4DF-V2A**

**Options**

☐ G05: Gold Plating (5 micro inches)

☐ G30: Gold Plating (30 micro inches)

☐ S30: Silver Plating (30 micro inches)

**Ordering Note:** Plated component: terminal body

**Accessories**

**560-K4DF-V2A-**