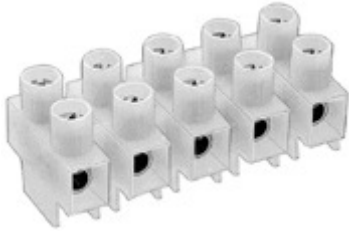




Product Number: 323-FU-18.5-V/04
Eurostyle Screw Terminal Strips for Panel / Chassis Mounting

TYPE 323-FU-18.5-V (-HDS)
10 mm spacing - 1 to 12 poles



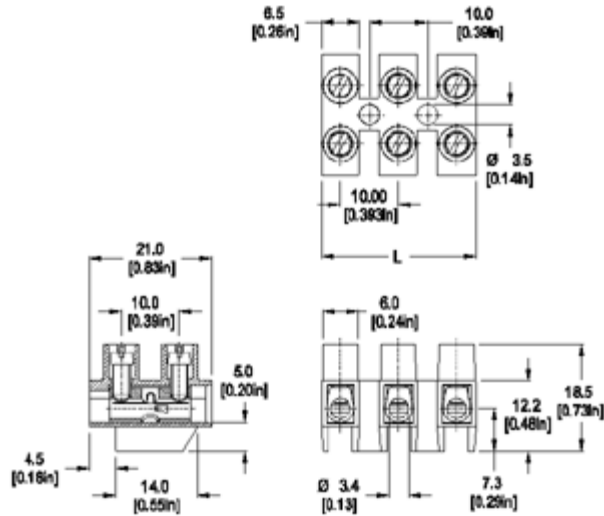
Raised Base:



Wire Stop:



RoHS WEEE Pb free surface compliant



Dimensions: mm (in.)

Length of Connector (L)

L = No. of Poles x Center to Center Spacing – 3.5 mm

When locating connector, allow 0.5 mm clearance around it for process-induced variations.

Description

The -FU designation provides a higher clearance and therefore higher creepage distances to meet certain VDE design requirements.

The -V designation indicates that a wire stop is provided inside the block to control the wire insertion depth.

- Raised base
- With wire stop
- 18.5 mm height
- Recommended mounting hardware: M3.5 pan head screw (#6-32 pan head screw) or similar sized sheet metal screw, self-tapping screw or rivet.

Technical Data

Center to Center Spacing: 10 mm (0.394 in.)

Nominal Cross Section: 2.5 mm² (3874 mils²)

Wire Stripping Length: 6 mm (0.25 in.)

Material

Molding: Polyamide, self extinguishing to UL 94, V-2, color off-white

Temperature limits:

Short Time: 140 °C (284 °F)

Continuous: RTI 105 °C (221 °F)

Low Limit: -40 °C (-40 °F)

Comparative Tracking Index: CTI ≥ 600V

Oxygen Index Rating: 25%

Terminal Body: Nickel plated copper alloy

Wire Protector: Stainless steel strip

Screw: M3, Slotted head, zinc plated blue passivated, steel substrate

Application

The panel and chassis mounted series are ideal for connecting electrical control panels to external power sources, signal sources, other electrical panels and electrical loads of many types and sizes. The electrical panel's or electrical enclosure's internal components and circuitry are connected to their appropriate external electrical circuitry through these terminal blocks. The screw tightened connections result in high contact forces thus promoting safe wire secureness and retention, low electrical resistance and safe reusable connections. All wire retention screws are captive in their towers and they cannot fall out during transportation, installation and use. Wire protectors are available to protect small gauge stranded wires from screw damage. These terminal strips can be completely enclosed within the enclosures or be placed at an enclosure opening with one side accessible for external cabling and the other for internal wiring. They can be specially marked to your specifications.