



PRODUCT SEARCH

307-PCM/03-8.033-4.8

e.g.20.874.002

PRODUCTS

COMPANY

CONTACT US

SUPPORT

SITE MAP

PRODUCTS



CROSS-REFERENCE

Multi-Point Tab and Screw Connectors for Panel / Chassis Mounting

TYPE 307-PCM

11 mm spacing - 1 to 21 poles



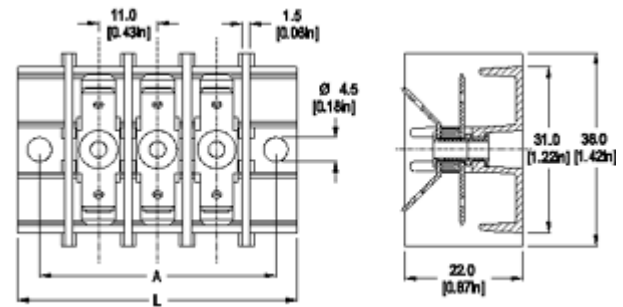
Distributor Stock Check



Series	Download PDF	3D Model	Can plug with	How to order	Color specifications	Print
--------	--------------	----------	---------------	--------------	----------------------	-------



RoHS WEEE Pb free surface compliant



Dimensions: mm (in.)

Length of Connector (L)

L = No. of Poles x Center to Center Spacing + 19.3 mm

Distance between mounting hole centers (A)

A = No. of Poles x Center to Center Spacing + 11.3 mm

When locating connector, allow 0.5 mm clearance around it for process-induced variations.

Description

- Multi-Point tab Connector
- Tab arrangements at various angles
- Recommended mounting hardware: M4 pan head screw (#8-32 pan head screw) or similar sized sheet metal screw, self-tapping screw or rivet.

Technical Data

Center to Center Spacing: 11 mm (0.433 in.)
Nominal Cross Section: 2.8 mm (0.110 in.) tabs: 1 mm² (1550 mils²) 4.8 mm (0.187 in.) tabs: 2.5 mm² (3874 mils²) 6.3 mm (0.250 in.) tabs: 6 mm² (9299 mils²) Screw side: 4 mm² (6199 mils²)
Wire Stripping Length: 8 mm (0.31 in.)

Illustration

Approval Information

UL File No.E69841

CSA File No.LR24322

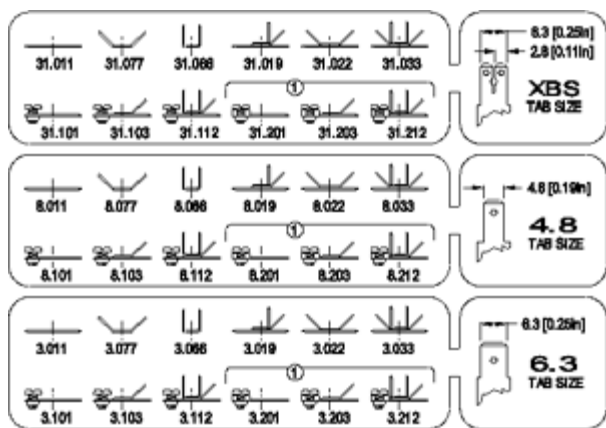
Rating	Current(A)	Voltage(V)	Application group	AWG
UL	25	300	B,C	12 max.
CSA	25	300	B,C,D,E	18-14

* 6.3 mm tab current rating is 25A
 4.8 mm tab current rating is 15A
 2.8 mm tab current rating is 10A

International Approvals:



Rated Impulse Withstand Voltage: 4000 V



Tab arrangement

(1) These arrangements feature flanges to prevent wires slipping from under the screw head.

Material

Molding: polycarbonate, self extinguishing to UL 94, V-0, color grey

Temperature limits:

Short Time: 135°C (274°F)

Continuous: RTI 105°C (221°F)

Low Limit: -100°C (-148°F)

Comparative Tracking Index: CTI ≥ 400V

Oxygen Index Rating: 40%

Terminal Body and Tabs: Nickel plated copper alloy
Screw and Pressure Plate: Slotted head, zinc plated blue passivated, steel substrate

Rivet: Tin plated copper alloy

Tabs: 2.8 mm (0.110 in.), 4.8 mm (0.187 in.) or 6.3 mm (0.250 in.),

Screw: M4, Slotted head, zinc plated blue passivated, steel substrate

[Top of page](#)

How to order

Item — 307-PCM

Options

- G05: Gold Plating (5 micro inches)
- G30: Gold Plating (30 micro inches)
- S30: Silver Plating (30 micro inches)
- SM: Special Marking (please provide sketch)

Note: Plated component: tab

Ordering Note: For versions which require a mix of tab arrangements or tab sizes, please include a sketch when ordering. Additional or custom tab arrangements may be available. This product may also be offered as a PCB variety. Please consult factory.

- Request sample**
- Request quote**

Quantity

Accessories

- [Jumper, Type 307-V.](#)
- [BST Marking Strips for tab and solder connector.](#)
- [ISO Insulating Sleeves.](#)
- [Covers and Securing pins, Type 3070.](#)

307-PCM / - -

[Add to shopping cart](#)

2008, WECO Electrical Connectors Inc.

ISO 9001 registered quality management system