



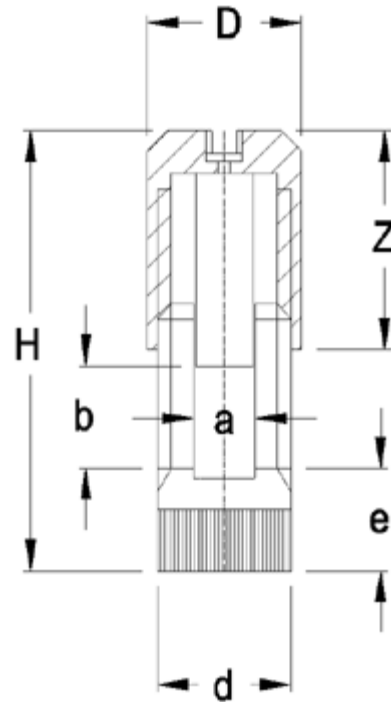
Grounding Terminals

TYPE 17-MUB /-MUG

Inventory Check



RoHS WEEE Pb free surface compliant



Dimensions: mm (in.)

- D = 8.0 (0.31)
- d = 7.0 (0.28)
- H = 22.0 (0.87)
- Z = 11.0 (0.43)
- e = 4.5 (0.18)
- 17-MUB: h = n/a
- g = M4
- 17-MUG: h = 8.0 (0.31)
- g = M4

Max. Terminal space a x b
3.1 x 5.5 (0.12 x 0.22)

Description

The grounding terminals were developed and patented by WECO. The upper section encompasses the lower section and thus prevents the limbs from bending outwards. The terminals guarantee a high degree of operational reliability and meet the requirements of the corresponding VDE regulations.

The flat clamping member which is mounted in the upper section in such a way that it can rotate reliably prevents damage to the wires. This design is thus particularly suitable for stranded conductors

Three base designs are available for different scopes of applications.

- Single Grounding Terminal
- Dual Wire Clamping
- Threaded Hole or Threaded Post
- With Locking Cap
- MU: with flat, stationary clamping mechanism

Technical Data

Nominal Cross Section:

2 x 4 mm² (2 x 6199 mils²)

Wire Stripping Length: 9 mm (0.35 in.)

(maximum load at 40°C (104°F) ambient temperature)

Recommended operating

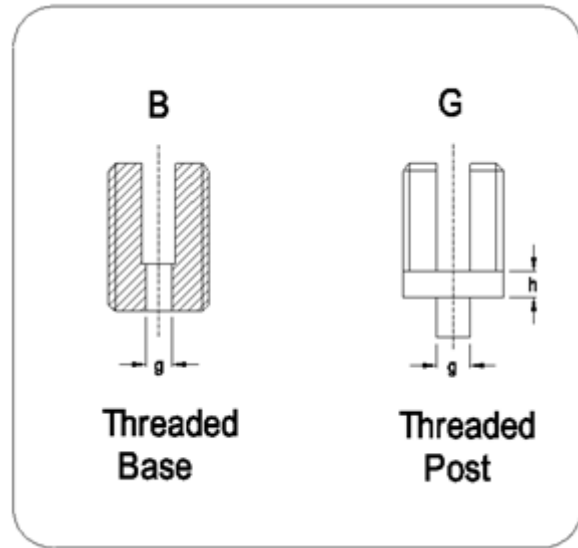
Current: 39A

Recommended operating Wire

Range: 2 x 12 AWG

Application

This design is thus particularly suitable for stranded conductors



Base Style Options B: Threaded Hole G: Threaded Post

Material

Temperature upper limit: 200°C (392°F)
Terminal Body: M4, Nickel plated brass
Locking Cap: Nickel plated brass
Threaded Hole or Threaded Post: M4,

Item

17-MUB /-MUG

Accessories

17-MU

BASE STYLE:
 threaded hole: B threaded post: G