



Screw Connectors for Printed Circuit Boards

TYPE 150-B-151 /-153
5 mm spacing - 4 to 48 poles



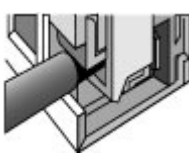
Distributor Stock Check



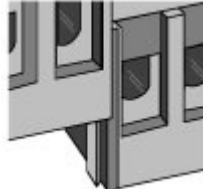
150-B-151 Back row offset to the left



150-B-153 Back row offset to the right



Elevator Style Clamping

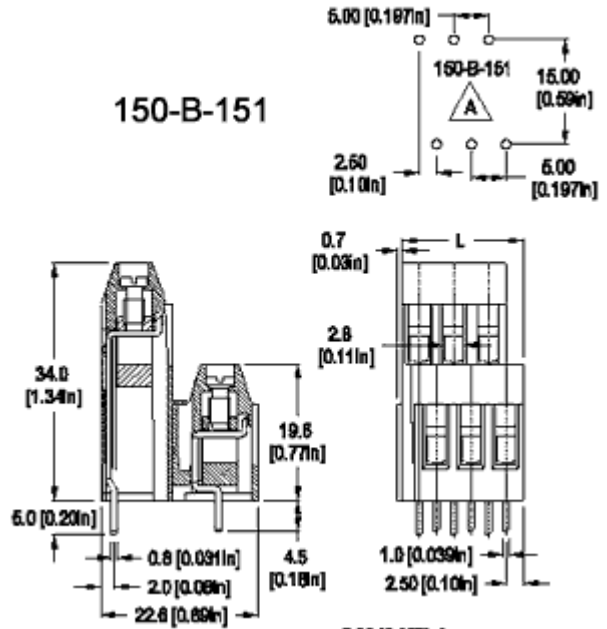


Dovetail Interlocking Feature

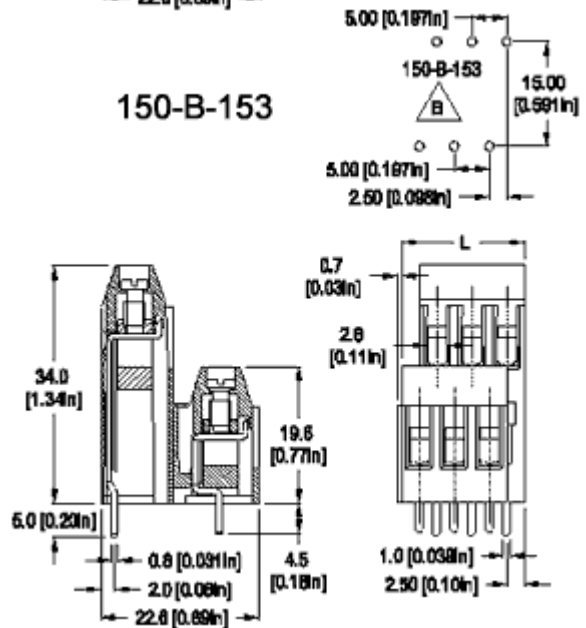


RoHS WEEE Pb free surface compliant

150-B-151



150-B-153



Dimensions: mm (in.)

Length of Connector (L)
 $L = (\text{No. of Poles} \times \text{Center to Center Spacing} / 2) + 2.5 \text{ mm}$
 (A) PCB hole layout
 (B) PCB hole layout

When locating connector, allow 0.5 mm clearance around it for

Description

- Dovetail version
- Double level
- Wire entrance parallel to PC Board
- Elevator-style clamping mechanism



- The longer length of back row solder pins simplifies installation
- The 4 and 6 poles units can be factory, field or distributor assembled to almost any number of poles.
- 150-B-151: Back row offset to the left
- 150-B-153: Back row offset to the right

Technical Data

Center to Center Spacing: 5 mm (0.197 in.)
Nominal Cross Section:
 2 x 2.5 mm² (2 x 3874 mils²) solid wire 1 x 4 mm² (1 x 6199 mils²)
 stranded wire
Wire Stripping Length: 8 mm (0.31 in.)
Recommended Hole Diameter in PC Board:
 1.4 mm (0.055 in.)

process-induced variations.

Approval Information

UL File No.E69841 
 CSA File No.LR24322 

Rating	Current(A)	Voltage(V)	Application group	AWG
UL	20	300	B,C,D	26-10
CSA	20	300	B	26-10
CSA	10	300	D,E	26-10

* UL: 24-26 AWG range for factory wiring only.

Screw Tightening Torque:

UL: 4.5 lbf·in
 CSA: 0.51 Nm

Rated Impulse Withstand Voltage: 2500 V

Material

Molding: Polyamide, self extinguishing UL 94, V-0, color grey

Temperature limits:

Short Time: 140°C (284°F)

Continuous: RTI 105°C (221°F)

Low Limit: -40°C (-40°F)

Comparative Tracking Index: CTI > 600

Oxygen Index Rating: 33%

Terminal Body: Nickel plated copper alloy

Solder Pin and Pressure Plate: Tin plated copper alloy

Screw: M3, Slotted head, zinc plated blue passivated, steel substrate

Solder Pin: 1.0 mm x 0.8 mm (0.04 in. x 0.03 in.),

Item **150-B-151 /-153**

Options

- CN: Consecutive Numbering (hot stamped numbers)
- SM: Special Marking (please provide sketch)
- BS: Copper Alloy Screw
- G05: Gold Plating (5 micro inches)
- G30: Gold Plating (30 micro inches)
- S30: Silver Plating (30 micro inches)

Note: Plated components: solder pin and pressure plate

Ordering Note: To order factory assembled specify the number of poles required.

Accessories

150-B-15 BACK ROW OFFSET: POLES:

 left: 1 right: 3 04 to 48

/