

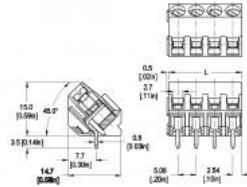


SCREW CONNECTORS FOR PRINTED CIRCUIT BOARDS

146-C-111

5.08 mm (0.2 in) Spacing - 2 - 24 poles

[Print this page](#)



ZOOM

Dimensions: mm (in.)

Length of Connector (L)

L = No. of Poles x Center to Center Spacing

[distributor stock check](#)

[view 3d model](#)

When locating connector, allow 0.5 mm clearance around it for process-induced variations.

TECHNICAL INFORMATION

APPROVAL INFORMATION

HOW TO ORDER

Description

Can be installed anywhere on PCB without wires or screws interfering with the rest of PCB. Can be located next to each other back-to-back, front-to-front and front-to-back. The screws and wire entries are easily visible, accessible and usable, an ergonomic advantage.

Dovetail version

Wire entrance at 45° angle to PC Board

Elevator-style clamping mechanism

Can be factory, field or distributor assembled to almost any length

Technical Data

Center to Center Spacing: 5.08 mm (0.2 in)

Nominal Cross Section: 2.5 mm² (3874 mils²)

Wire Stripping Length: 7 mm (0.28 in.)

Recommended Hole Diameter in PC Board: 1.4 mm (0.055 in.)

Bill of Materials

Molding : Polyamide, self extinguishing UL 94, V-0

Color : grey

Temperature limits : Short Time : 140 °C (284 °F)

Continuous : RT1 105 °C (221 °F)

Low Limit : -40 °C (-40 °F)

Comparative Tracking Index : CTI ≥ 600 V

Oxygen Index Rating : 33%

Terminal Body: Nickel plated copper alloy

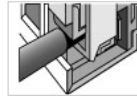
Solder Pin and Pressure Plate: Tin plated copper alloy

Screw: M3 Slotted head, zinc plated blue passivated, steel substrate

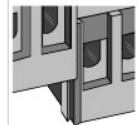
Solder Pin: 1.0 mm x 0.8 mm (0.04 in. x 0.03 in.)

Visual Description

Elevator Style Clamping



Dovetail Interlocking Feature





RoHS WEEE Pb free surface compliant



Approval Information

UL File No. [E69841](#) | CSA File No. [LR24322](#)

| | TYPE (Spacing) | Current (A) | Voltage (V) | Application Group | AWG | Screw Tightening Torque |
|---|----------------------|-------------|-------------|-------------------|----------------|-------------------------|
|  | 146-C-111 5.08 mm | 20 | 300 | B, D | 26-12 | 4.5 lbfin |
|  | 146-C-111 5.08 mm | 20 10 | 300 300 | B D, E | 26-12 26-12 | 0.51 Nm 0.51 Nm |

International Approval Information



Rated Impulse Withstand Voltage : 4000 V

Please fill in the How to Order box

- | | |
|---|----------|
| <input type="checkbox"/> Request Sample | Quantity |
| <input type="checkbox"/> Request Quote | Quantity |

146-C-111

Poles:

Select one

OPTIONS:

- BS: Copper Alloy Screw
- CN: Consecutive Numbering (hot stamped numbers)
- G05: Gold Plating (5 micro inches)
- G30: Gold Plating (30 micro inches)
- S30: Silver Plating (30 micro inches)
- SM: Special Marking (please provide sketch)

Accessories

[BST Self Adhesive Marking Strips, Consecutively numbered, Jumper, Type 970-J1.](#)

Notes

Plated components: solder pin and pressure plate

ADD TO CART