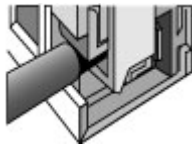




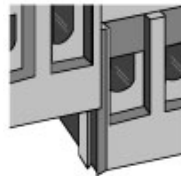
Product Number: 140-B-153/22-SM
Screw Connectors for Printed Circuit Boards
5 mm spacing – 4 to 48 poles



140-B-153 Back row offset to the right



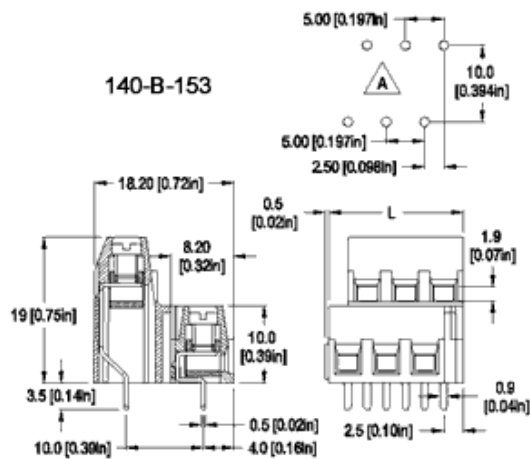
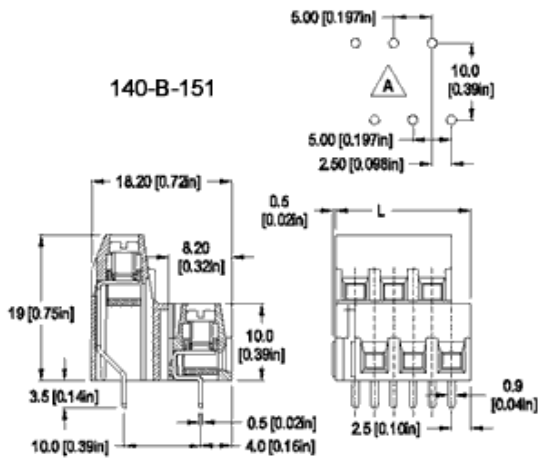
Elevator Style Clamping



Dovetail Interlocking Feature

Description:

- Dovetail version
- Double level
- Wire entrance parallel to PC Board
- Elevator-style clamping mechanism
- The 4 and 6 poles units can be factory, field or distributor assembled to almost any number of poles.



Dimensions: mm (in.)

Length of Connector (L)

$L = (\text{No. of Poles} \times \text{Center to Center Spacing} / 2) + 2.5 \text{ mm}$

(A) PCB hole layout

(B)

When locating connector, allow 0.5 mm clearance around it for process-induced variations.

Technical Data:

Center to Center Spacing:

5 mm (0.197 in.)

Nominal Cross Section:

1.5^2 (2325 mils²)

Wire Stripping Length:

6 mm (0.25 in.)

Recommended Hole Diameter

In PC Board:

1.2 mm (0.047 in.)

Material:

Molding:

Polyamide, self extinguishing UL 94, V-0, color grey

Short Time:

140°C (284°F)

Continuous:

RTI 105°C (221°F)

Low Limit:

-40°C (-40°F)

Comparative Tracking Index:

CTI > 600

Oxygen Index Rating:

33%

Terminal Body:

Nickel plated copper alloy

Solder Pin and Pressure Plate:

Tin plated copper alloy

Screw:

M3, Slotted head, zinc plated blue passivated, steel substrate

Solder Pin:

0.9 mm x 0.5 mm (0.04 in. x 0.02 in.),

