



PRODUCT SEARCH

140-B-151/06

Re.g.20.874.002

PRODUCTS

COMPANY

CONTACT US

SUPPORT

SITE MAP

PRODUCTS



CROSS-REFERENCE

## Screw Connectors for Printed Circuit Boards

### TYPE 140-B-151 /-153

5 mm spacing - 4 to 48 poles



Distributor Stock Check

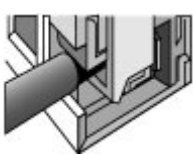
Series	Download PDF	3D Model	Can plug with	How to order	Color specifications	Print
--------	--------------	----------	---------------	--------------	----------------------	-------



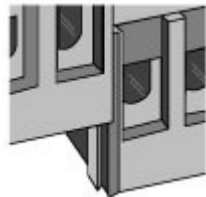
140-B-151 Back row offset to the left



140-B-153 Back row offset to the right



Elevator Style Clamping



Dovetail Interlocking Feature



RoHS WEEE Pb free surface compliant

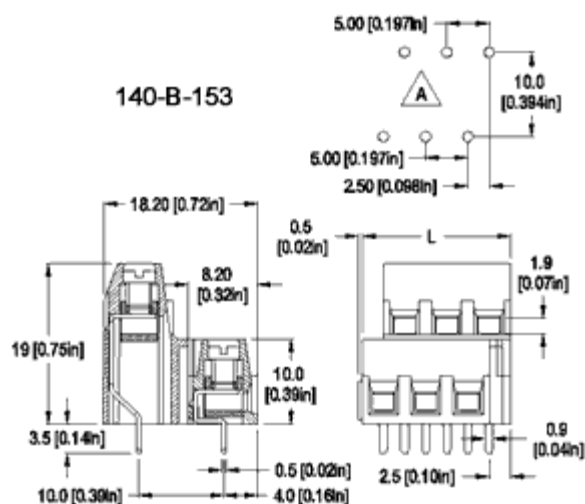
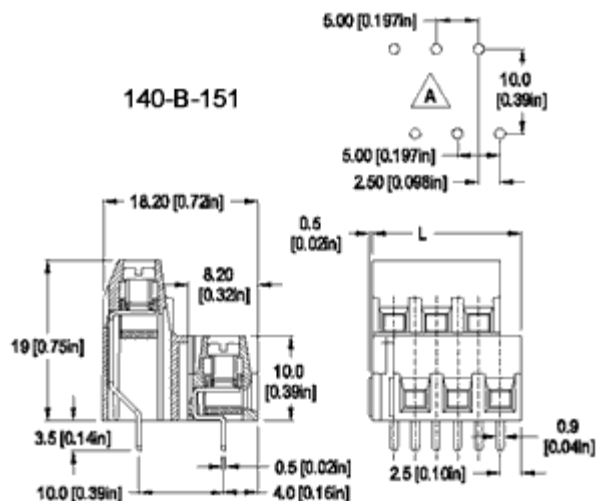
## Description

- Dovetail version
- Double level
- Wire entrance parallel to PC Board
- Elevator-style clamping mechanism

- The 4 and 6 poles units can be factory, field or distributor assembled to almost any number of poles.
- 140-B-151: Back row offset to the left.
- 140-B-153: Back row offset to the right.

**Technical Data**

**Center to Center Spacing:** 5 mm (0.197 in.)  
**Nominal Cross Section:** 1.5 mm<sup>2</sup> (2325 mils<sup>2</sup>)  
**Wire Stripping Length:** 6 mm (0.25 in.)  
**Recommended Hole Diameter in PC Board:** 1.2 mm (0.047 in.)





**Dimensions: mm (in.)**

Length of Connector (L)  
 $L = (\text{No. of Poles} \times \text{Center to Center Spacing} / 2) + 2.5 \text{ mm}$   
 (A) PCB hole layout

**When locating connector, allow 0.5 mm clearance around it for process-induced variations.**

**Approval Information**

UL File No.E69841   
 CSA File No.LR24322 

Rating	Current(A)	Voltage(V)	Application group	AWG
UL	10	300	B,C,D	30-14
CSA	15	300	B	30-14
CSA	10	150	D,E	30-14

 Top of page

\* UL: 20A range for factory wiring only.

**Screw Tightening Torque:**

UL: 4.5 lbf·in  
 CSA: 0.51 Nm

**Rated Impulse Withstand Voltage:** 2500 V

**Material**

**Molding:** Polyamide, self extinguishing UL 94, V-0, color grey

**Temperature limits:**

**Short Time:** 140°C (284°F)  
**Continuous:** RTI 105°C (221°F)  
**Low Limit:** -40°C (-40°F)

**Comparative Tracking Index:** CTI ≥ 600V

**Oxygen Index Rating:** 33%

**Terminal Body:** Nickel plated copper alloy

**Solder Pin and Pressure Plate:** Tin plated copper alloy

**Screw:** M3, Slotted head, zinc plated blue passivated, steel substrate

**Solder Pin:** 0.9 mm x 0.5 mm (0.04 in. x 0.02 in.),

**How to order**

**Item** — **140-B-151 /-153**

**Options**

- CN: Consecutive Numbering (hot stamped numbers)
- SM: Special Marking (please provide sketch)
- BS: Copper Alloy Screw
- G05: Gold Plating (5 micro inches)
- G30: Gold Plating (30 micro inches)
- S30: Silver Plating (30 micro inches)

- Request sample**
- Request quote**

Quantity | 1 |

**Accessories**

[BST Self Adhesive Marking Strips. Consecutively numbered. Jumper, Type 970-J1.](#)

**Note:** Plated components: solder pin and pressure plate

**Ordering Note:** To order factory assembled specify the number of poles required.

**140-B-15**

BACK ROW OFFSET:  
left: 1 right: 3

POLES:  
04 to 48

**Add to shopping cart**