

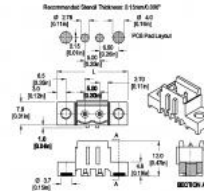


SURFACE MOUNT TERMINAL BLOCKS

120-M-227-SMD

5.00 mm (0.197 in) Spacing - 2 - 22 poles

[Print this page](#)



Dimensions: mm (in.)

Length of Connector (L)

ZOOM

L = No. of Poles x Center to Center Spacing + 14 mm

(A)

(B) Recommended Stencil Thickness: 0.15 mm (0.006 in.)

(C) PCB Pad layout

[distributor stock check](#)

[additional photos](#)

[view 3d model](#)

TECHNICAL INFORMATION

APPROVAL INFORMATION

PLUGS WITH

HOW TO ORDER

Description

US Patent 6,966,795

The solder retention devices (SMT anchors) provide an exceptionally high retention force for the terminal block to the PCB. The most significant benefit of this design is the protection it provides to the solder joints against stresses encountered in field-installations. This is the strongest SMT retention method in the industry. The anchoring element constitutes a Universal SMT retention method (can be licensed for other applications). It eliminates completely CTE mismatch (Coefficient of thermal expansion) and provide total coplanarity (contains position adapting pin). Removable thermo resistant pick caps are supplied when packed in tape and reel. This allows automated pick & place applications.

Header

Typical pull off forces: 50 kg per module (depending on soldering process).
Typical peel off forces: 30 kg per module (depending on soldering process).

Technical Data

Center to Center Spacing: 5 mm (0.197 in.)

Bill of Materials

Molding : Polyamide 4.6, 30% GF (glass fiber reinforced), self extinguishing UL 94, V-0

Color : grey

Temperature limits : Short Time : 250 °C (482 °F)
Continuous : RTI 105 °C (221 °F)
Low Limit : -40 °C (-40 °F)

Comparative Tracking Index : CTI ≥ 600 V

Oxygen Index Rating : 33%

Solder Pin: 1 x 1 mm (0.04 x 0.04 in.) Tin plated copper alloy

Average weight per pole: 1.2 g



Visual Description

RoHS WEEE Pb free surface compliant



Approval Information

UL File No. [E69841](#) | CSA File No. [LR24322](#)

	TYPE (Spacing)	Current (A)	Voltage (V)	Application Group	AWG	Screw Tightening Torque
	120-M-227-SMD	15	300	B		
	5.0 mm	10	300	D		
	120-M-227-SMD	15	300	B		
	5.0 mm	10	300	D, E		

Plug-In Direction Perpendicular to PCB and Wire Entrance Parallel to PCB

Plug-In Direction and Wire Entrance Perpendicular to PCB



TYPE 120-D-111
5.00 mm spacing - 2 - 24 poles



TYPE 120-A-111
5.00 mm spacing - 2 - 24 poles



TYPE 120-D-121
5.00 mm spacing - 2 - 24 poles

Please fill in the How to Order box

- Request Sample Quantity
- Request Quote Quantity

120-M-227-SMD

Poles:

Select one

OPTIONS:

- 14.5MM: Solder Pin length of 14.5 mm
- CN: Consecutive Numbering (hot stamped numbers)
- G05:;ld Plating (5 micro inches)
- G30:;ld Plating (30 micro inches)
- PCP: Removable Pick Cap
- S30: Silver Plating (30 micro inches)
- SM: Special Marking (please provide sketch)

ADD TO CART