

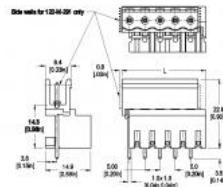


PLUG-IN SCREW CONNECTOR SYSTEM FOR PRINTED CIRCUIT BOARDS

120-M-191 /-291

5.00 mm (0.197 in) Spacing - 2 - 24 poles

[Print this page](#)



Dimensions: mm (in.)

Length of Connector (L)

ZOOM

$L = (\text{No. of Poles} \times \text{Center to Center Spacing}) + 2.5 \text{ mm}$

(A) Side walls for 120-M-291 only

[distributor stock check](#)

[additional photos](#)

[view 3d model](#)

TECHNICAL INFORMATION

APPROVAL INFORMATION

PLUGS WITH

HOW TO ORDER

Description

Type 120-M-191 /-291 terminal block has been designed to allow effective potting of PC boards. The molding design prevents seepage of the potting material into the wire clamping area up to 13 mm (0.5 in.) from the board.

Header

High clearance above PCB

Can be installed anywhere on PCB without plugs or wires interfering with other components. The high clearance allows the connection to be located outside of the enclosure.

With or without Sidewalls

Coding keys 120-K are available to prevent the insertion of the wrong plug into a header. These are usually field inserted but can be factory installed if required.

Technical Data

Center to Center Spacing: 5 mm (0.197 in)

Recommended Hole Diameter in PC Board: 1.4 mm (0.055 in.)

Bill of Materials

Molding : Polyamide, self extinguishing UL 94, V-0

Color : grey

Temperature limits : Short Time : 140°C (284°F)

Continuous : RTI 105°C (221°F)

Low Limit : -40°C (-40°F)

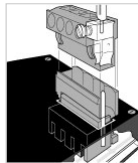
Comparative Tracking Index : CTI ≥ 600 V

Oxygen Index Rating : 33%

Solder Pin: 1 x 1 mm (0.04 x 0.04 in.) Tin plated copper alloy

Visual Description

Typical Application





RoHS WEEE Pb free surface compliant





Approval Information

UL File No. [E69841](#) | CSA File No. [LR24322](#)

	TYPE (Spacing)	Current (A)	Voltage (V)	Application Group	AWG	Screw Tightening Torque
	120-M-191 /-291	15	300	B		
	5.0 mm	10	300	D		
	120-M-191 /-291	15	300	B		
	5.0 mm	10	300	D, E		

Alternative Approval Information

UL File No. [E69841](#) | CSA File No. [LR24322](#)

	TYPE (Spacing)	Current (A)	Voltage (V)	Application Group	AWG	Screw Tightening Torque
	120-M-192 /-292	15	300	C		
	10.0 mm	5	600	D		
	120-M-192 /-292		600	D, E		
	10.0 mm					

International Approval Information



Rated Impulse Withstand Voltage : 2500 V

Plug-In Direction Perpendicular to PCB and Wire Entrance Parallel to PCB

Plug-In Direction and Wire Entrance Perpendicular to PCB



TYPE 120-D-111
5.00 mm spacing - 2 - 24 poles



TYPE 120-A-111
5.00 mm spacing - 2 - 24 poles



TYPE 120-D-121
5.00 mm spacing - 2 - 24 poles

Please fill in the How to Order box

- Request Sample Quantity
- Request Quote Quantity

120-M

Sidewalls:

Select one

Spacing:

Select one

Poles:

Select one

OPTIONS:

- CN: Consecutive Numbering (hot stamped numbers)
- G05:;ld Plating (5 micro inches)
- G30:;ld Plating (30 micro inches)
- S30: Silver Plating (30 micro inches)
- SM: Special Marking (please provide sketch)

Accessories

BST Self Adhesive Marking Strips, Consecutively numbered.

Notes

Plated component: solder pin

Ordering Notes

Voltage rating for 10 mm spacing is UL certified for 15A - 300 / C and for 5A - 600 / D and CSA certified for 600 / D,E (120-M-192 /-292).

ADD TO CART