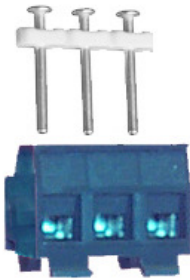




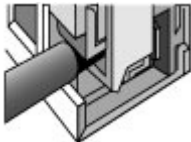
**Product Number: 115-F-211/12**  
**Plug-in Screw Connector System for Printed Circuit Boards**  
**TYPE 115-F-211**  
**5 mm spacing - 2 to 12 poles**



115-F-211



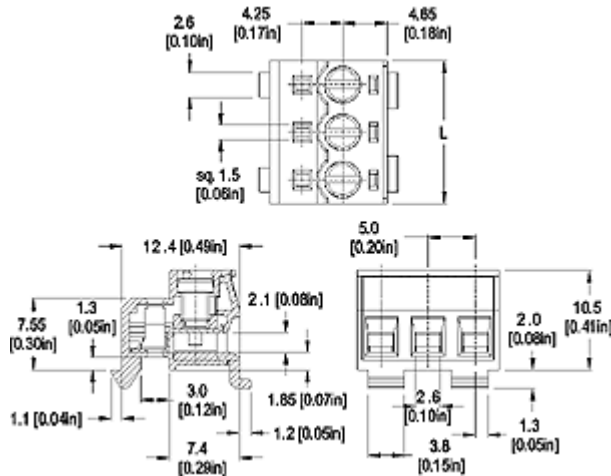
One possible variation of assembly



Elevator Style Clamping



RoHS WEEE Pb free surface compliant



**Dimensions: mm (in.)**

**When locating connector, allow 0.5 mm clearance around it for process-induced variations.**

### **Description**

The 115-F is part of the plug-in screw connector family with an elevator style clamping mechanism. It was developed as an alternative to 950-FL connector types.

The 115-F-211 is a version with a snap-in locking device making installation on a mounting plate possible. The footprint is designed towards making a perfect match with 971-SLK type pinstrips.

- Plug
- Solid version
- Low profile
- Plug-In Direction Perpendicular to PCB and Wire Entrance Parallel to PCB when plugged with 971-SLK /-SLS /-SLW, 971-SLK-SMD, 971-SLK-THR, 971-SLK-CPL, 971-SLT-SMD, 950-SLR-SMD, 971-SLR-THR, 971-SLR-THR-1.1, 971-SLR-THR-1.3
- Elevator Style Clamping mechanism

### **Technical Data**

**Center to Center Spacing:** 5 mm (0.197 in.)  
**Nominal Cross Section:** 2.1 mm<sup>2</sup> (3255 mils<sup>2</sup>)  
**Wire Stripping Length:** 6.5 mm (0.25 in.)

### **Material**

**Molding:** Polyamide, self extinguishing UL 94, V-0, color grey

#### **Temperature limits:**

**Short Time:** 140°C (284°F)

**Continuous:** RTI 105°C (221°F)

**Low Limit:** -40°C (-40°F)

**Comparative Tracking Index:** CTI≥600V

**Oxygen Index Rating:** 32%

**Terminal Body:** Nickel plated copper alloy

**Contact Spring:** Tin plated copper alloy

**Screw:** M3, Zinc plated blue passivated, steel substrate