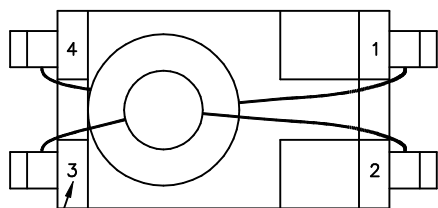
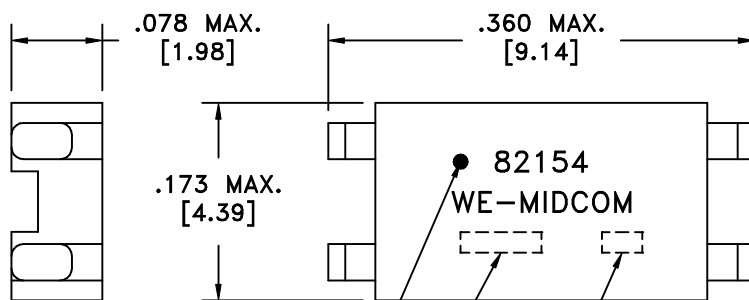


PART NUMBER	SOLDER SUFFIX	SOLDER	(6E)
82154R		Sn63%, Pb37%	
82154R-LF1	LF1	Sn96%, Ag4%	(6G)



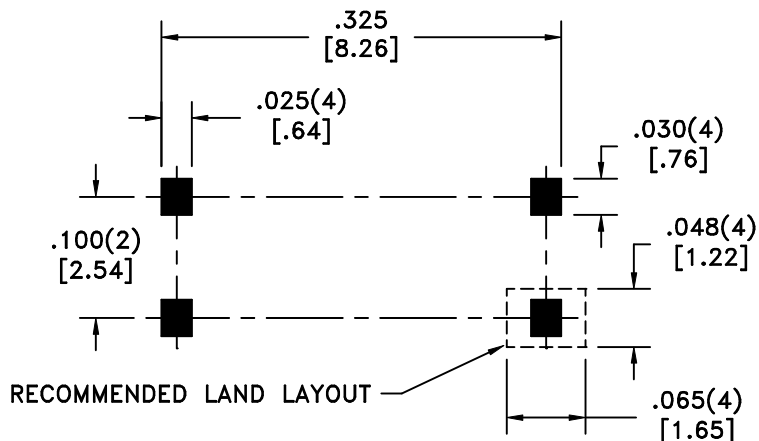
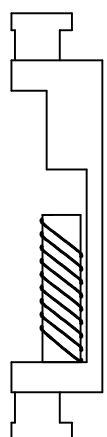
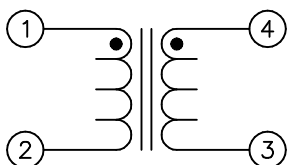
TERM. NO.'s FOR REF. ONLY



DOT LOCATES TERM. #1

LOT CODE & DATE CODE

SOLDER SUFFIX (6E)



RECOMMENDED LAND LAYOUT

TERMINAL PAD DIMENSIONS  
CUSTOMER TO DETERMINE LAND SIZE

**ELECTRICAL SPECIFICATIONS @ 25°C unless otherwise noted:**

D.C. RESISTANCE (@20°C): 1-2, 0.350 ohms max.  
3-4, 0.350 ohms max.

DIELECTRIC RATING: 3000VAC, 1 minute tested by applying 3750VAC for 1 second between 1-4.

INDUCTANCE: 30uH min., 10kHz, 100mVAC, 1-2, Ls.

TURNS RATIO: (4-3):(1-2) = 1.67:1, ±1%.


Designed to comply with the following requirements as defined by IEC60950-1, EN60950-1, UL60950-1/CSA60950-1 and AS/NZS60950.1:  
- Supplementary insulation for a primary circuit at a working voltage of 250Vrms.

(6C)(6L)(6R)

AGENCY NUMBER	
BABT	NC/012240
UL60950-1	E205930
CSA60950-1 (Via CUL)	E205930
IEC60950-1 (Via CB cert.)	US/8440/UL
JAPAN (Via CB cert.)	US/8440/UL
ACA/AUSTEL (Via CB cert.)	US/8440/UL
VDE	40016613
JQA	JQ10503-1

Unless otherwise specified:  
Tolerances:  
Angles: ±1°  
Fractions: ±1/64  
Decimals: ±.005[.13]  
  
This drawing is dual dimensioned.  
Dimensions in brackets are in millimeters.

DRAWING TITLE  
**TRANSFORMER**  
  
eiSos p/n:  
  
REVISIONS: SEE SHEET 1

 Midcom  
www.midcom-inc.com

DRAWING NO. **82154R/-LF1** (6E) REV. 6S 9/06

SCALE --- SHEET 2 OF 6

DWG.# 82154R/-LF1