

## Data Sheet | Item Number: 284-413

Step-down jumper; from 284/282 to 282/281 series; insulated; gray

<https://www.wago.com/284-413>



Color: ■ gray

### Electrical data

#### Ratings per IEC/EN

Rated current	30 A
---------------	------

### Physical data

Width	7 mm / 0.276 inches
Height	9.6 mm / 0.378 inches
Depth	30.6 mm / 1.205 inches
Jumper assignment	1-2

### Material data

Note (material data)

[Information on material specifications can be found here](#)

Color	gray
Material group	I
Insulation material (main housing)	Polyamide (PA66)
Flammability class per UL94	V0
Fire load	0.017 MJ
Weight	2.8 g

### Commercial data

Product Group	1 (Rail Mounted Terminal Blocks)
eCl@ss 10.0	27-14-11-40
eCl@ss 9.0	27-14-11-40
ETIM 9.0	EC000489
ETIM 8.0	EC000489
PU (SPU)	50 (25) pcs
Packaging type	Box
Country of origin	DE
GTIN	4044918255455
Customs tariff number	85366990990

**Environmental Product Compliance**

RoHS Compliance Status	Compliant, No Exemption
------------------------	-------------------------

**Downloads**

**Environmental Product Compliance**

Compliance Search	
Environmental Product Compliance 284-413	<a href="#">↓</a>

**Documentation**

Additional Information		
Technical Section	pdf 2246.92 KB	<a href="#">↓</a>

Bid Text			
284-413	19.02.2019	xml 2.55 KB	<a href="#">↓</a>
284-413	28.04.2017	doc 23.00 KB	<a href="#">↓</a>

**CAD/CAE-Data**

CAD data	
2D/3D Models 284-413	<a href="#">↓</a>

CAE data	
EPLAN Data Portal 284-413	<a href="#">↓</a>
WSCAD Universe 284-413	<a href="#">↓</a>
ZUKEN Portal 284-413	<a href="#">↓</a>

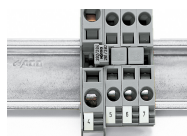
**Installation Notes**

**Commoning**



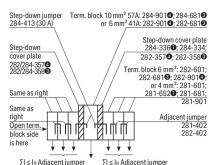
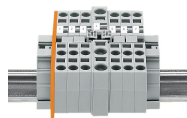
Commoning terminal blocks of different sizes – step down. Push down the step-down jumper until fully inserted!

Commoning



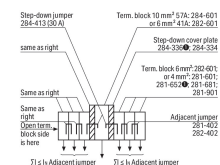
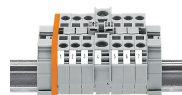
Note: Jumpers are marked with suitable terminal block sizes for correct installation.

Commoning



Commoning from 10 mm<sup>2</sup>/8 AWG (284 Series) to 6 mm<sup>2</sup>/10 AWG (282 Series) rail-mount terminal blocks via step-down jumpers.

Assembly example: Commoning from 10/6 mm<sup>2</sup> (8/10 AWG) to 6 mm<sup>2</sup> (10 AWG) rail-mount terminal blocks via step-down jumper (284-413).



Commoning from 10 mm<sup>2</sup>/8 AWG (284 Series) to 6 mm<sup>2</sup>/10 AWG (282 Series) rail-mount terminal blocks via step-down jumpers.

Assembly example: Commoning from 10/6 mm<sup>2</sup> (8/10 AWG) to 6 mm<sup>2</sup> (10 AWG) rail-mount terminal blocks via step-down jumper (284-413).