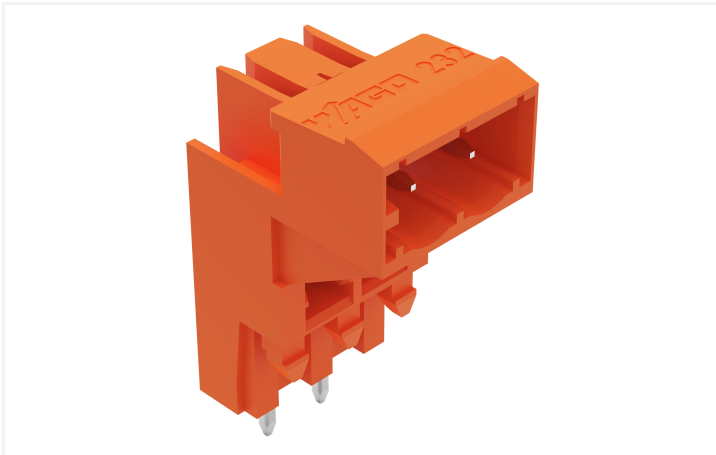


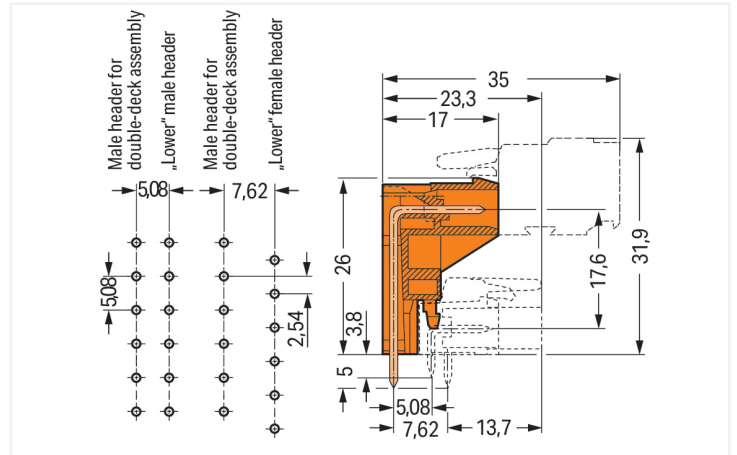
# Data Sheet | Item Number: 232-362

THT male header for double-deck assembly; 1.0 x 1.0 mm solder pin; angled; Pin spacing 5.08 mm; 2-pole; orange

<https://www.wago.com/232-362>



Color: ■ orange

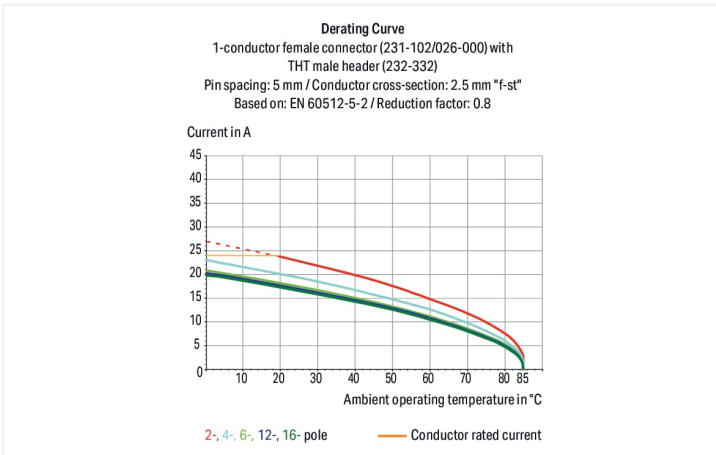


Dimensions in mm

Length = (pole no. - 1) x pin spacing + 8.2 mm

The solder pins of the "lower" male headers are in line.

The solder pins of the "lower" female headers are staggered by half a pin spacing.



- Male headers for double-deck assembly provide high-density wiring for wire-to-board connections
- Horizontal PCB mounting
- Double-deck design allows male or female headers with angled solder pins to be placed on the lower deck
- Coding option available

## Notes

### Safety Information

The MCS – MULTI CONNECTION SYSTEM includes connectors without breaking capacity in accordance with DIN EN 61984. When used as intended, these connectors must not be connected/disconnected when live or under load. When used as intended, these connectors must not be connected/disconnected when live or under load. The circuit design should ensure header pins, which can be touched, are not live when unmated.

### Variants:

Other pole numbers

Gold-plated or partially gold-plated contact surfaces

Other versions (or variants) can be requested from WAGO Sales or configured at <https://configurator.wago.com/>.

### Electrical data

| Ratings per          | IEC/EN 60664-1 |       |       |
|----------------------|----------------|-------|-------|
| Overvoltage category | III            | III   | II    |
| Pollution degree     | 3              | 2     | 2     |
| Nominal voltage      | 320 V          | 320 V | 630 V |
| Rated surge voltage  | 4 kV           | 4 kV  | 4 kV  |
| Rated current        | 12 A           | 12 A  | 12 A  |

| Approvals per | UL 1059 |   |       |
|---------------|---------|---|-------|
| Use group     | B       | C | D     |
| Rated voltage | 300 V   | - | 300 V |
| Rated current | 10 A    | - | 10 A  |

| Approvals per | UL 1977 |
|---------------|---------|
| Rated voltage | 600 V   |
| Rated current | 10 A    |

| Approvals per | CSA   |   |       |
|---------------|-------|---|-------|
| Use group     | B     | C | D     |
| Rated voltage | 300 V | - | 300 V |
| Rated current | 10 A  | - | 10 A  |

### Connection data

|                            |   |
|----------------------------|---|
| Total number of potentials | 2 |
| Number of connection types | 1 |
| Number of levels           | 1 |

| Connection 1 |   |
|--------------|---|
| Pole number  | 2 |

### Physical data

|                                      |                          |
|--------------------------------------|--------------------------|
| Pin spacing                          | 5.08 mm / 0.2 inches     |
| Width                                | 13.36 mm / 0.526 inches  |
| Height                               | 31 mm / 1.22 inches      |
| Height from the surface              | 26 mm / 1.024 inches     |
| Depth                                | 17 mm / 0.669 inches     |
| Solder pin length                    | 5 mm                     |
| Solder pin dimensions                | 1 x 1 mm                 |
| Drilled hole diameter with tolerance | 1.4 <sup>(+0.1)</sup> mm |

### Mechanical data

|                          |     |
|--------------------------|-----|
| Variable coding          | No  |
| Anti-rotation protection | Yes |

### Plug-in connection

|                                    |                     |
|------------------------------------|---------------------|
| Contact type (pluggable connector) | Male connector/plug |
| Connector (connection type)        | for PCB             |
| Mismating protection               | No                  |
| Mating direction to the PCB        | 0°                  |

### PCB contact

|                                     |  |
|-------------------------------------|--|
| PCB contact                         | THT                                      |
| Solder pin arrangement              | over the entire male connector (in-line) |
| Number of solder pins per potential | 1  |

### Material data

|                                    |  |
|------------------------------------|--|
| Note (material data)               | <a href="#">Information on material specifications can be found here</a> |
| Color                              | orange   |
| Material group                     | I  |
| Insulation material (main housing) | Polyamide (PA66)   |
| Flammability class per UL94        | V0   |
| Contact material                   | Electrolytic copper (E <sub>CU</sub> )                                   |
| Contact Plating                    | Tin  |
| Fire load                          | 0.057 MJ   |
| Weight                             | 2.6 g  |

### Environmental requirements

|                         |                 |
|-------------------------|-----------------|
| Limit temperature range | -60 ... +100 °C |
| Processing temperature  | -35 ... +60 °C  |

### Commercial data

|                       |                        |
|-----------------------|------------------------|
| Product Group         | 3 (Multi Conn. System) |
| eCl@ss 10.0           | 27-44-04-02            |
| eCl@ss 9.0            | 27-44-04-02            |
| ETIM 8.0              | EC002637               |
| ETIM 7.0              | EC002637               |
| PU (SPU)              | 100 pcs                |
| Packaging type        | Box                    |
| Country of origin     | PL                     |
| GTIN                  | 4044918685535          |
| Customs tariff number | 85366930000            |

### Environmental Product Compliance

|                        |                         |
|------------------------|-------------------------|
| RoHS Compliance Status | Compliant, No Exemption |
|------------------------|-------------------------|

### Approvals / Certificates

#### General approvals



| Approval                              | Standard  | Certificate Name |
|---------------------------------------|-----------|------------------|
| CB<br>DEKRA Certification B.V.        | IEC 61984 | NL-39756/A1      |
| KEMA/KEUR<br>DEKRA Certification B.V. | EN 61984  | 71-121453        |
| UL<br>UL International Germany GmbH   | UL 1977   | E45171           |
| UR<br>Underwriters Laboratories Inc.  | UL 1059   | E45172           |

#### Approvals for marine applications



| Approval                                | Standard  | Certificate Name  |
|---|-----------|-------------------|
| ABS<br>American Bureau of Ship-<br>ping | -         | 19-HG15869876-PDA |
| DNV<br>DNV GL SE                        | -         | TAE000016Z        |
| LR<br>Lloyds Register                   | IEC 61984 | 96/20035 (E5)     |

## Downloads

### Environmental Product Compliance

#### Compliance Search

Environmental Product Compliance 232-362



## Documentation

### Additional Information

Technical Section

03.04.2019

pdf

2027.26 KB



## CAD/CAE-Data

### CAD data

2D/3D Models 232-362



### CAE data

EPLAN Data Portal 232-362



ZUKEN Portal 232-362



## PCB Design

Symbol and Footprint via SamacSys 232-362



Symbol and Footprint via Ultra Librarian 232-362



## 1 Compatible Products

### 1.1 System counterpart

#### 1.1.1 Female connector/socket



#### Item No.: [231-302/026-000](#)

1-conductor female connector; CAGE CLAMP®; 2.5 mm<sup>2</sup>; Pin spacing 5.08 mm; 2-pole; 2,50 mm<sup>2</sup>; orange

## 1.2 Optional Accessories

### 1.2.1 Coding

#### 1.2.1.1 Coding



**Item No.: 231-129**

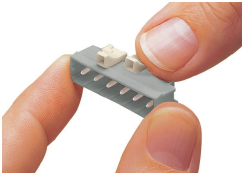
Coding key; snap-on type; light gray

**Item No.: 231-160**

Coding pin; for coding lower male headers; push-in type; light gray

## Installation Notes

### Coding



Coding a male header – fitting coding key(s).