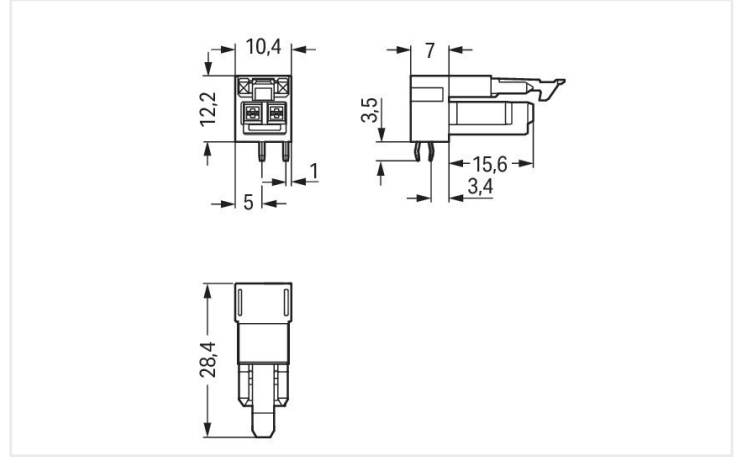
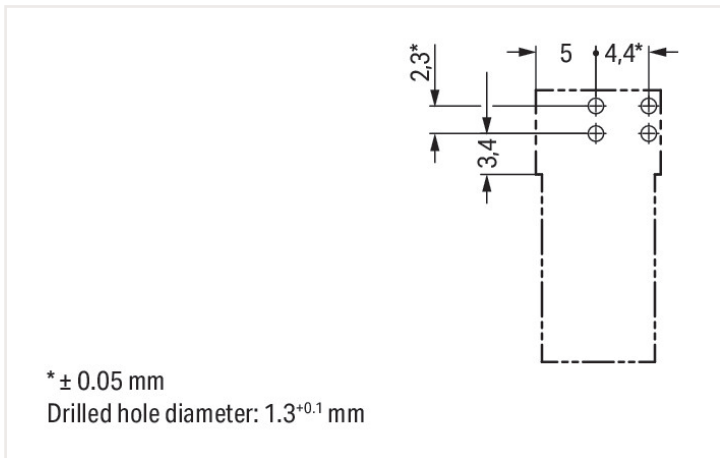


Color: ■ light green



Dimensions in mm



Dimensions in mm

#### Female connector/socket WINSTA® MINI 2-pole

Secure installations with distinctive connection technology: The WINSTA® MINI female connector/socket. Our pluggable PCB connectors provide a universal pluggable connection system for your devices that meets all the conditions for a robust device connection that is easy to put into operation. The color coding and mechanical coding of the pcb connector ensure error-free installation of the individual components – including protection against mismatching. Pcb connectors with B coding from the WINSTA® MINI line are available in grey, light grey, or pink, allowing you to distinguish different circuits, for example for pumps, lighting, or sun blinds. Your own pole marking is possible in addition. Thanks to its particularly minimal dimensions, our WINSTA® MINI Pluggable Connection System with Push-in CAGE CLAMP® spring pressure connection technology is very suitable in very tight spaces, i. e., for connections when very little room is available.

Push-in CAGE CLAMP® spring pressure connection technology – pluggable installation instead of laborious screw connections!

WINSTA® is the pluggable connection system that is perfectly tailored to the strict requirements of electrical installation. It allows fast, secure and, above all, error-free installation of components and cables. Now you can also cut installation costs without compromising quality and safety: The WINSTA® MINI pcb connector with protection against mismatching reduces the need for servicing and prevents unnecessary downtime.

- protection against mismatching eliminates errors
- consistent IP40 protection
- for automation controllers
- rapid, structured electrical installation

## Notes

Variants:

Other pole markings

Other versions (or variants) can be requested from WAGO Sales or configured at <https://configurator.wago.com/>.

## Electrical data

Note on contact resistance

approx. 1 mΩ of contact resistance  
approx. 0.25 mΩ contact transition plug/  
socket

## Ratings per IEC/EN

Ratings per IEC/EN 60664-1

Nominal voltage (III/3) 250 V

Rated impulse voltage (III/3) 4 kV

Rated current 16 A

Legend (ratings) (III / 3) ≙ Overvoltage category III / Pollution degree 3

## Ratings per UL

Note for the US market

Some versions may also be used for current interruption in accordance with the UL certificate in select applications with currents below 5 A and voltages up to 600 V. For further information, please contact your local sales office.

Rated voltage (UL 1977)

600 V

Rated current UL 1977

14 A

## Connection data

Total number of potentials

2

Number of levels

1

## Connection 1

Pole number

2

## Physical data

Pin spacing

4.4 mm / 0.173 inch

Width

10.4 mm / 0.41 inch

Height

15.7 mm / 0.618 inch

Height from the surface

12.2 mm / 0.48 inch

Depth

28.4 mm / 1.118 inch

Solder pin length

3.5 mm

Solder pin dimensions

1 x 0.8 mm

Drilled hole diameter with tolerance

1.3 (+0.1) mm

## Mechanical data

Application

Control technology

Coding

B

Variable coding

No

Marking

1 2

Potential marking

1 2

Mating force of a plug-in connection

approx. 20 ... 70 N (depending on pole number)

Retention force of a plug-in connection

Locked:

Unmating force of a plug-in connection

Unlocked: approx. 20 ... 70 N (depending on pole number)

Number of mating cycles

200, without resistive load  
100, with resistive load  $I_N = 16$  A, tested (1.5 mm<sup>2</sup>)

Design

angled

### Plug-in connection

Contact type (pluggable connector)	Female connector/socket
Connector (connection type)	for PCB
Mismating protection	Yes
Note on mismating protection	All WINSTA® components are 100% protected against mismating when: a.) plugging different numbers of poles b.) plugging while rotated 180° c.) plugging while laterally staggered d.) plugging one pole
Mating direction to the PCB	0°
Locking lever	Yes
Locking of plug-in connection	Locking lever
Note on locking system	All connectors for mounted installations (snap-in versions for lighting fixtures or devices, all types of PCB and distribution connectors) are factory-equipped with locking levers to ensure plugs and sockets are securely locked. Additional locking levers are only required for flying leads (plug/socket).

### PCB contact

PCB contact	THT
Solder pin arrangement	2 in-line solder pins/pole
Number of solder pins per potential	2

### Material data

Note (material data)	<a href="#">Information on material data can be found here</a>
Color	light green
Cover color	gray
Insulation material	Polyamide (PA66)
Clamping spring material	Chrome-nickel spring steel (CrNi)
Contact material	Copper or copper alloy; surface-treated
Fire load	0.014 MJ
Weight	2.5 g

### Environmental requirements

Processing temperature	-5 ... +40 °C
Continuous operating temperature	-35 ... +85 °C
Note on continuous operating temperature	Insulating parts for temperatures ≤ 105 °C

### Commercial data

eCl@ss 10.0	27-44-06-05
eCl@ss 9.0	27-44-06-05
ETIM 7.0	EC002560
ETIM 6.0	EC002560
PU (SPU)	100 Stück
Packaging type	Box
Country of origin VKOrg Germany	PL
GTIN	4050821695998
Customs tariff number VKOrg Germany	85366990990



Approvals / Certificates

Country specific Approvals



Approval	Standard	Certificate name
CB DEKRA Certification B.V.	IEC 61984	NL-64351
CB DEKRA Certification B.V.	EN 61984	71-112993
KEMA/KEUR DEKRA Certification B.V.	EN 60320	2148952.04

Ship Approvals



Approval	Standard	Certificate name
DNV GL Det Norske Veritas, Germanischer Lloyd	-	TAE00001Z6
LR Lloyds Register	EN 61535	08/20047 (E2)

UL-Approvals



Approval	Standard	Certificate name
cURus Underwriters Laboratories Inc.	UL 1977	E45171

Downloads

Environmental Product Compliance

Compliance Search
Environmental Product Compliance 890-862/011-000



CAD/CAE-Data

CAD data
2D/3D Models 890-862/011-000



CAE data
ZUKEN Portal 890-862/011-000

