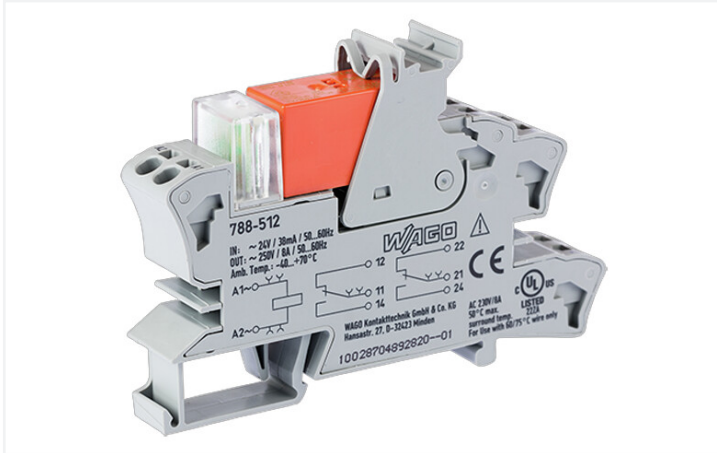


# Data Sheet | Item Number: 788-512

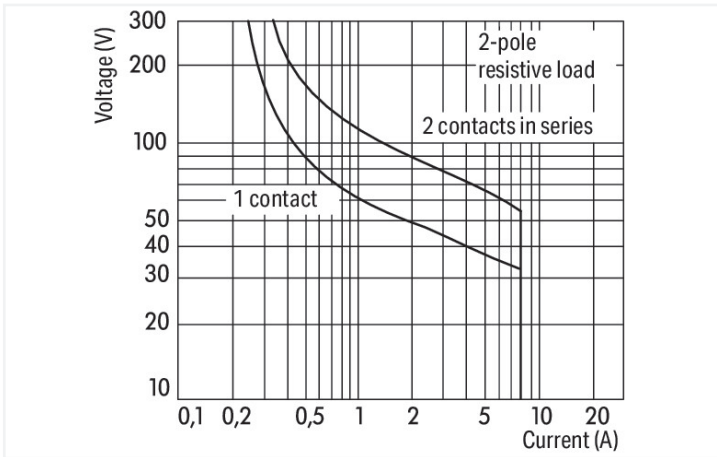
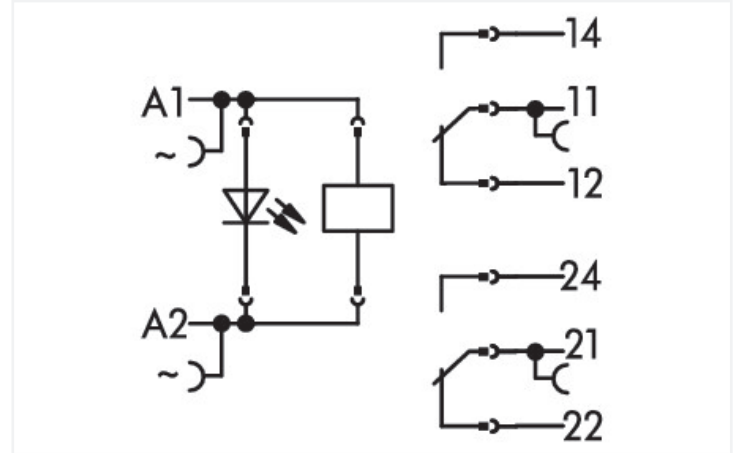
Relay module; Nominal input voltage: 24 VAC; 2 changeover contacts; Limiting continuous current: 8 A; Red status indicator; Module width: 15 mm; 2,50 mm<sup>2</sup>; gray



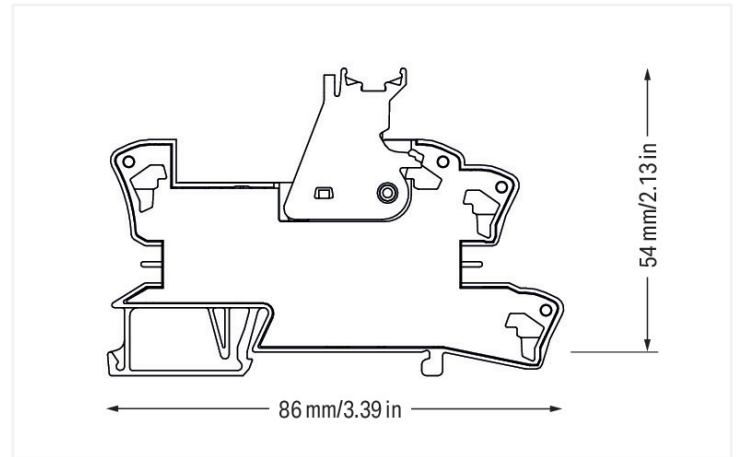
<https://www.wago.com/788-512>



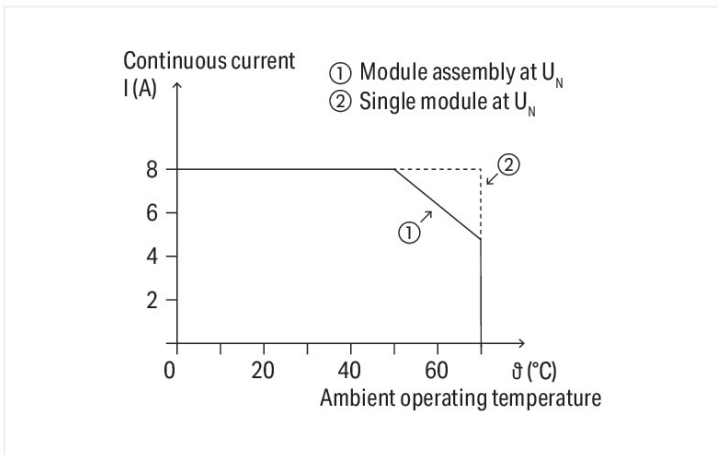
Color:  gray



DC load limit curve



Dimensions in mm



Current-carrying capacity curve

## Notes

Safety information 1	A separator plate (e.g., 209-191) must be used for voltages greater than 250 V between adjacent relay modules and for compliance with the reinforced insulation requirements.
Note	<ul style="list-style-type: none"> <li>Reinforced insulation between coil and contacts</li> <li>To protect the relay coils and contacts, inductive loads must be dampened with an effective protection circuit.</li> </ul>

## Technical data

Control Circuit		Load circuit	
Nominal input voltage $U_N$	AC 24 V	Number of changeover/switchover contacts	2
Input voltage range	$\pm 10\%$	Contact material (relay)	AgNi 90/10
Nominal input current at $U_N$	34 mA	Limiting continuous current	8 A
		Inrush current (resistive) max.	(AC) 15 A / 4 s
		Switching voltage (max.)	AC 250 V
		Switching power (resistive) max.	AC 2000 VA; DC (see load limit curve)
		Switching capacity	AC-15: 3 A / AC 250 V; DC-13: 2 A / DC 24 V
		Recommended minimum load	12 V / 10 mA
		Pull-in time (typ.)	10 ms
		Drop-out time (typ.)	35 ms
		Bounce time (typ.)	10 ms
		Electrical life (NO; resistive load; 23 °C)	$10 \times 10^3$ switching operations
		Mechanical life	$30 \times 10^6$ switching operations
		Switching frequency with/without load (max.)	$6 \text{ min}^{-1}$ / $1200 \text{ min}^{-1}$

## Signaling

Status indicator	Red LED
------------------	---------

## Safety and protection

Rated voltage	250 V
Rated surge voltage	4 kV
Pollution degree	3
Dielectric strength (control/load circuit) (AC, 1 min)	5 kVrms
Dielectric strength (open contact) (AC, 1 min)	1 kVrms
Dielectric strength (load/load circuit) (AC, 1 min)	2.5 kVrms
Safety information 1	A separator plate (e.g., 209-191) must be used for voltages greater than 250 V between adjacent relay modules and for compliance with the reinforced insulation requirements.
Protection type	IP20

## Connection data

Connection technology	Push-in CAGE CLAMP®
Solid conductor	0.34 ... 2.5 mm <sup>2</sup> / 22 ... 14 AWG
Fine-stranded conductor	0.34 ... 2.5 mm <sup>2</sup> / 22 ... 14 AWG
Strip length	9 ... 10 mm / 0.35 ... 0.39 inches

### Physical data

Width	15 mm / 0.591 inches
Height	86 mm / 3.386 inches
Depth from upper-edge of DIN-rail	54 mm / 2.126 inches

### Mechanical data

Mounting type	DIN-35 rail
---------------	-------------

### Material Data

Color	gray
Fire load	0.898 MJ
Weight	47.7 g

### Environmental requirements

Ambient temperature (operation at $U_N$ )	-40 ... +70 °C
Ambient temperature UL (operation at $U_N$ )	-40 ... +50 °C
Surrounding air temperature (storage)	-40 ... +70 °C
Processing temperature	-25 ... +50 °C
Temperature range of connection cable	$\geq (T_{\text{ambient}} + 20 \text{ K})$

### Standards and specifications

Standards/specifications	EN 61010-2-201 EN 61810-1 EN 61373 UL 508 DNV
--------------------------	---

### Basic relay

WAGO Basic Relay	788-172
------------------	---------

### Commercial data

Product Group	6 (INTERFACE ELECTRONIC)
eCl@ss 10.0	27-37-16-01
eCl@ss 9.0	27-37-16-01
ETIM 8.0	EC001437
ETIM 7.0	EC001437
PU (SPU)	20 (1) pcs
Packaging type	Box
Country of origin	CN
GTIN	4045454424145
Customs tariff number	85364900990

### Approvals / Certificates

General approvals



Approval	Standard	Certificate Name
EAC Brjansker Zertifizierungs- stelle	TP TC 004/2011	EAC RU C-DE.AM02. B.00122/19
UL Underwriters Laboratories Inc. (ORDINARY LOCATI- ONS)	UL 508	E175199 Vol.1 Sec.6

Approvals for marine applications



Approval	Standard	Certificate Name
DNV DNV Germany GmbH	DNV-CG-0339, Aug.2021	TAA00001D1
PRS Polski Rejestr Statków	-	TE/2186/880590/18

Downloads

Environmental Product Compliance

Compliance Search
Environmental Product Compliance 788-512 <a href="#">↓</a>

Documentation

Bid Text			
788-512	19.02.2019	xml 4.60 KB	<a href="#">↓</a>
788-512	25.01.2019	docx 16.41 KB	<a href="#">↓</a>

Instruction Leaflet			
Sockets with Elementa- ry Relay/ SSR	V 1.0.1 09.10.2020	pdf 2271.22 KB	<a href="#">↓</a>

CAD/CAE-Data

CAD data
2D/3D Models 788-512 <a href="#">↓</a>

CAE data
EPLAN Data Portal 788-512 <a href="#">↓</a>
WSCAD Universe 788-512 <a href="#">↓</a>
ZUKEN Portal 788-512 <a href="#">↓</a>

1 Compatible Products

1.1 Optional Accessories

1.1.1 Ferrule

1.1.1.1 Ferrule



**Item No.: 216-241**  
 Ferrule; Sleeve for 0.5 mm<sup>2</sup> / 20 AWG; insulated; electro-tin plated; electrolytic copper; gastight crimped; acc. to DIN 46228, Part 4/09.90; white

**Item No.: 216-242**  
 Ferrule; Sleeve for 0.75 mm<sup>2</sup> / 18 AWG; insulated; electro-tin plated; electrolytic copper; gastight crimped; acc. to DIN 46228, Part 4/09.90; gray

**Item No.: 216-243**  
 Ferrule; Sleeve for 1 mm<sup>2</sup> / AWG 18; insulated; electro-tin plated; electrolytic copper; gastight crimped; acc. to DIN 46228, Part 4/09.90; red

**Item No.: 216-244**  
 Ferrule; Sleeve for 1.5 mm<sup>2</sup> / AWG 16; insulated; electro-tin plated; electrolytic copper; gastight crimped; acc. to DIN 46228, Part 4/09.90; black

**Item No.: 216-542**  
 Twin ferrule; Sleeve for 2 x 1 mm<sup>2</sup> / AWG 2 x 18; red, insulated; 12 mm long; red

1.1.2 Filter module

1.1.2.1 Suppressor module



**Item No.: 788-148**  
 Filter module; RC filter element; Nominal voltage: 230 VAC

1.1.3 Indicators

1.1.3.1 Status indication



**Item No.: 788-123**  
 Accessories for relay modules; Operation status indicator: red; Nominal operating voltage: 24 VAC

1.1.4 Jumper

1.1.4.1 Jumper



**Item No.: 788-118**  
 Jumper; for jumper slot; 2-way; from 1 to 3; insulated; light gray

**Item No.: 788-113**  
 Jumper; for jumper slot; 2-way; insulated; light gray

**Item No.: 859-402**  
 Jumper; for jumper slot; 2-way; insulated; light gray

**Item No.: 788-114**  
 Jumper; for jumper slot; 3-way; insulated; light gray



**Item No.: 788-115**  
 Jumper; for jumper slot; 4-way; insulated; light gray

**Item No.: 788-116**  
 Jumper; for jumper slot; 6-way; insulated; light gray

**Item No.: 788-117**  
 Jumper; for jumper slot; 8-way; insulated; light gray

1.1.5 Marking

1.1.5.1 Double marker carrier



**Item No.: 209-128**

Adaptor; gray

1.1.5.2 Group marker carrier



**Item No.: 249-105**

Group marker carrier; gray



**Item No.: 209-145**

Group marker carrier; white

1.1.5.3 Marker



**Item No.: 209-183**

Marker; white



**Item No.: 793-502**

WMB marking card; as card; MARKED; 1 ... 10 (10x); not stretchable; Horizontal marking; snap-on type; white



**Item No.: 793-503**

WMB marking card; as card; MARKED; 11 ... 20 (10x); not stretchable; Horizontal marking; snap-on type; white



**Item No.: 793-504**

WMB marking card; as card; MARKED; 21 ... 30 (10x); not stretchable; Horizontal marking; snap-on type; white



**Item No.: 793-505**

WMB marking card; as card; MARKED; 31 ... 40 (10x); not stretchable; Horizontal marking; snap-on type; white



**Item No.: 793-501**

WMB marking card; as card; not stretchable; plain; snap-on type; white



**Item No.: 2009-115**

WMB-Inline; for Smart Printer; 1500 pieces on roll; stretchable 5 - 5.2 mm; plain; snap-on type; white

1.1.5.4 Marking devices



**Item No.: 210-110**

Fiber-tip pen

1.1.5.5 Marking strip



**Item No.: 2009-110**

Marking strips; for Smart Printer; on reel; not stretchable; plain; snap-on type; white

1.1.5.6 Protective marker cover



**Item No.: 209-184**

Protection cover; transparent

1.1.6 Tool

### 1.1.6.1 Operating tool

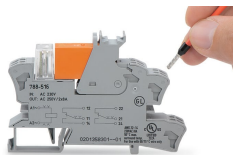


**Item No.: 210-720**

Operating tool; Blade: 3.5 x 0.5 mm; with a partially insulated shaft; multicoloured

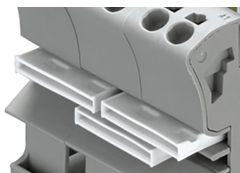
## Installation Notes

### Conductor termination



Conductor termination

### Commoning



Easy commoning using adjacent jumpers

### Marking



Marking using WMB Multi markers and group marker carriers.