

WALL-NUTS™

Connect Stranded and
Solid Wire

600 V building wiring
1000 V fixtures and signs
Current rating: Largest conductor used
105° C rated (221° F)

Fast - Safe - Easy

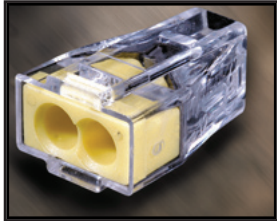


File: E69654

Clear housing allows visual confirmation of connection
Test port for easy continuity testing

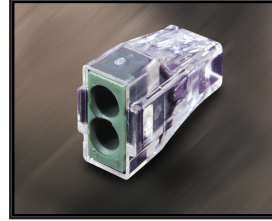


File: LR46759



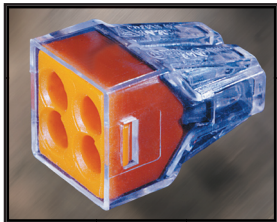
773-162

Yellow 2-conductor, 100 pc/box
For 500 piece bag, order:
773-102/VE00-0500
For 2500 piece bag, order:
773-102/VE00-2500
· 12-16 AWG Stranded Copper
(stranding pattern less than or
equal to 19)
· 12-18 AWG Solid Copper



773-112

Ground 2-conductor, 100 pc/bx:
· 12-16 AWG Stranded Copper
(stranding pattern less than or
equal to 19)
· 12-18 AWG Solid Copper



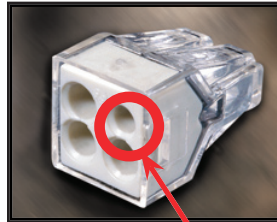
773-164

Orange 4-conductor, 100 pc/box
For 500 piece bag, order:
773-104/VE00-0500
For 2500 piece bag, order:
773-104/VE00-2500
· 12-16 AWG Stranded Copper
(stranding pattern less than or
equal to 19)
· 12-18 AWG Solid Copper



773-114

Ground 4-conductor, 100 pc/bx:
· 12-16 AWG Stranded Copper
(stranding pattern less than or
equal to 19)
· 12-18 AWG Solid Copper

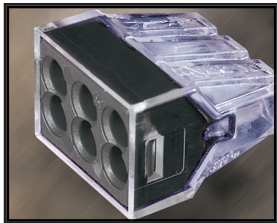


773-124

Lt. Gry Special 4-cond. 100pc/box
For 2500 piece bag, order:
773-124/VE01-0000
· 12-16 AWG Stranded Copper
(stranding pattern less than or
equal to 19)
· 12-18 AWG Solid Copper

(Special opening)

· 18 AWG Stranded Copper
(Stranding pattern less than or
equal to 16)
· 18 AWG Solid Copper



773-166

Black 6-conductor, 50pc/box
For 500 piece bag, order:
773-166/VE00-0500
For 2500 piece bag, order:
773-166/VE00-2500
· 12-16 AWG Stranded Copper
(stranding pattern less than or
equal to 19)
· 12-18 AWG Solid Copper



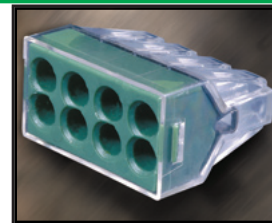
773-116

Ground 6-conductor, 50 pc/box:
· 12-16 AWG Stranded Copper
(stranding pattern less than or
equal to 19)
· 12-18 AWG Solid Copper



773-168

Dark Grey 8-conductor, 50pc/bg
For 2500 piece bag, order:
773-108/VE00-2500
· 12-16 AWG Stranded Copper
(stranding pattern less than or
equal to 19)
· 12-18 AWG Solid Copper

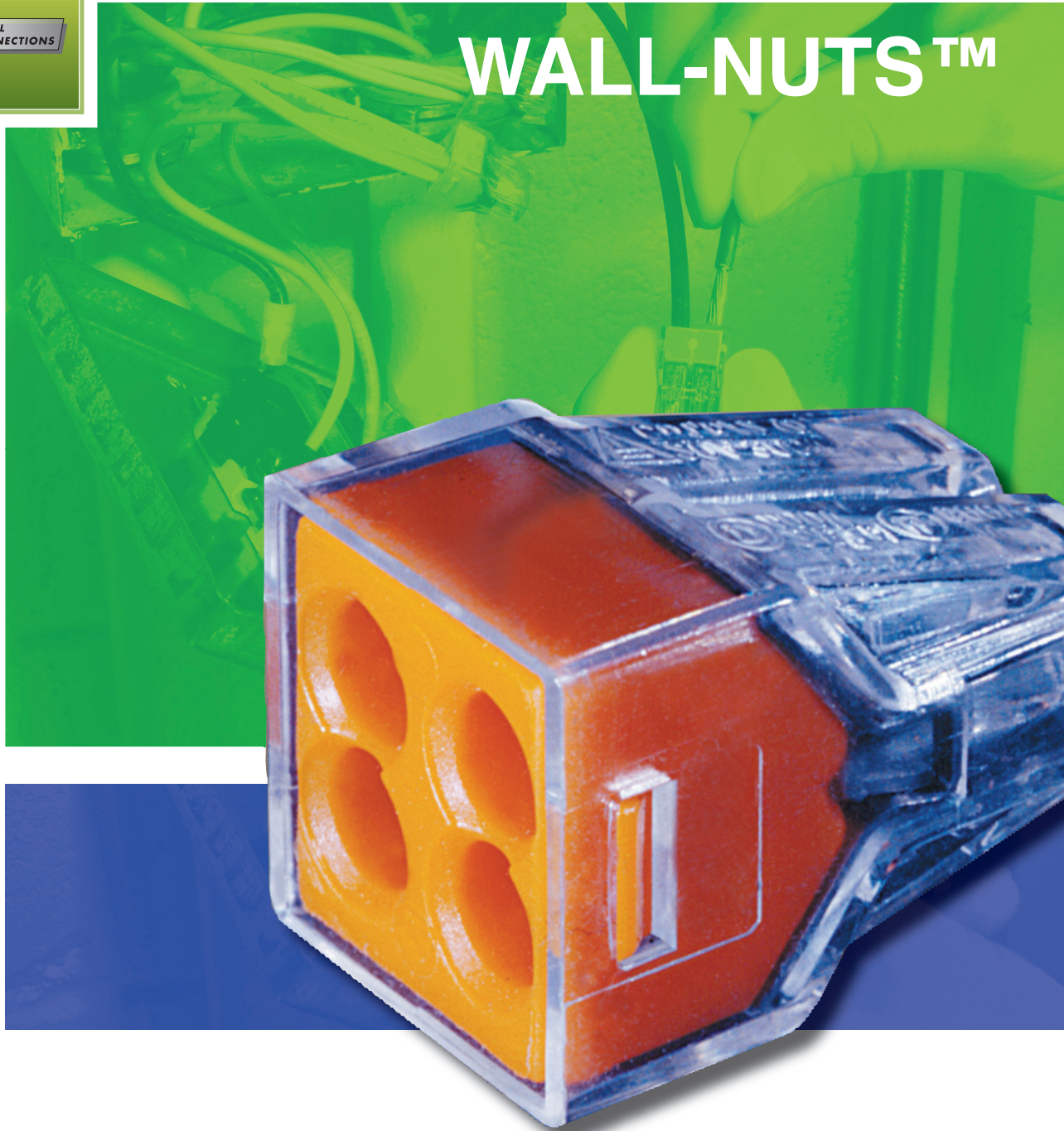


773-118

Ground 8-conductor, 50 pc/bg
· 12-16 AWG Stranded Copper
(stranding pattern less than or
equal to 19)
· 12-18 AWG Solid Copper

ELECTRICAL
INTERCONNECTIONS

WALL-NUTS™



● Pushwire Connectors

● for solid and stranded copper wire

WAGO®
INNOVATIVE CONNECTIONS

Introducing WALL-NUTS™

WALL-NUTS™ are the first push-in connectors that connect both stranded and solid copper wires. Now you can use the speed and dependability of push-wire technology in every application.



See The Safety

WALL-NUTS™ clear housing means you can see the firm connection of solid or stranded conductors. No more guessing whether the wires are twisted together or are pushed in far enough. Visual inspection allows you to see that WALL-NUTS™ make reliable connections.

Fast, Easy Installation

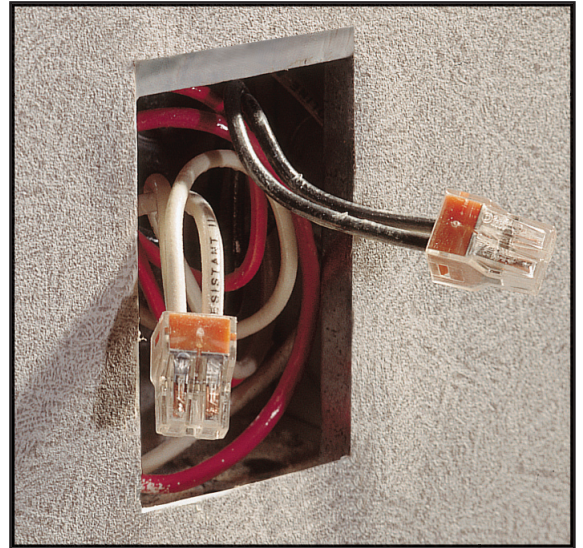
The new WALL-NUTS™ push-in connectors makes the job of wire connecting easier. No more twisting and taping required. Simply strip the wire; insert the conductor and you're finished.

The integrated test port allows for continuity testing without re-insertion.

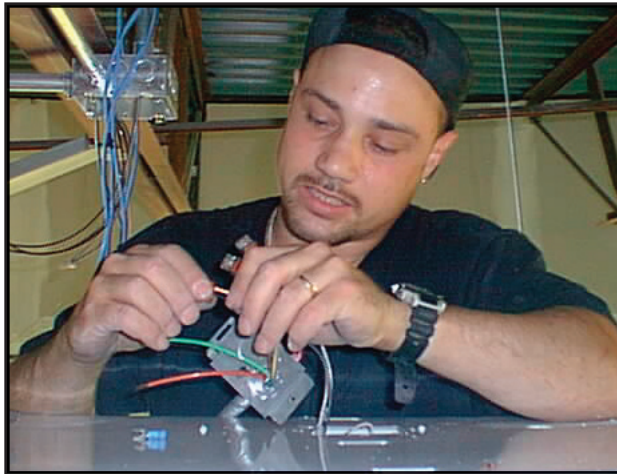


Safe

WALL-NUTS™ hold each wire individually, eliminating loose connections. WALL-NUTS™ are touch-proof and rated to 105° C. WALL-NUTS™ are UL Listed/CSA certified for 600 volts (1000 volts for fixtures and signs) and current rated to the largest conductor used.



WALL-NUTS™ are perfect for new construction and retrofit work.



WALL-NUTS™ work with solid and stranded wire making main, branch and fixture hookup fast, easy and safe.

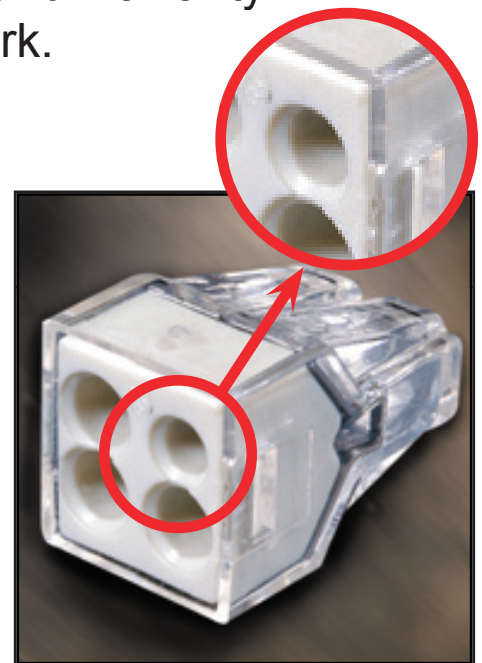
18 AWG Stranded Range

The 773-124 has a special opening that accepts 18 AWG stranded copper wire. This makes the connection of incandescent light fixtures, dimmer switches, ceiling fans and other accessories to branch and main circuits a breeze.

Toll Free: 1-800-DIN RAIL (346-7245)

Save Time

WALL-NUTS™ provide up to 50% time savings on installation. Secure connections reduce expensive troubleshooting and warranty work.



WALL-NUTS™ The 773-124's special opening wire range 18 stranded or solid; 18-22 tinned stranded copper.