



Color: ■ gray

Electrical data

Ratings per IEC/EN	
Rated current	150 A

Physical data

Jumper assignment	1-2
-------------------	-----

Material data

Note (material data)		Information on material specifications can be found here
Color	gray	
Fire load	0.09 MJ	
Weight	26.4 g	


Commercial data

Product Group	1 (Rail Mounted Terminal Blocks)
eCl@ss 10.0	27-14-11-40
eCl@ss 9.0	27-14-11-40
ETIM 8.0	EC000489
ETIM 7.0	EC000489
PU (SPU)	100 (25) pcs
Packaging type	Box
Country of origin	DE
GTIN	4045454549664
Customs tariff number	85366990990




Environmental Product Compliance	
RoHS Compliance Status	Compliant,No Exemption



Approvals / Certificates

General approvals			Approvals for hazardous areas		
					
Approval	Standard	Certificate Name	Approval	Standard	Certificate Name
CSA DEKRA Certification B.V.	C22.2	154112	AEx Underwriters Laboratories Inc.	UL 60079	E185892 (AEx eb II C resp. Ex eb II C)





Downloads

Environmental Product Compliance	
Compliance Search	
Environmental Product Compliance 285-450	

Documentation

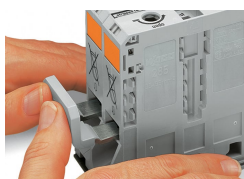
Bid Text			
285-450	19.02.2019	xml 2.53 KB	
285-450	04.01.2018	doc 22.00 KB	

CAD/CAE-Data

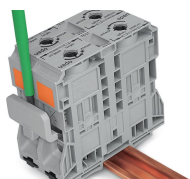
CAD data		CAE data	
2D/3D Models 285-450		EPLAN Data Portal 285-450	
		WSCAD Universe 285-450	
		ZUKEN Portal 285-450	

Installation Notes

Commoning



Commoning with an adjacent jumper: insert the jumper above the conductor entry hole – prior to conductor termination. The nominal cross-section remains unchanged.



Removing jumper via operating tool.