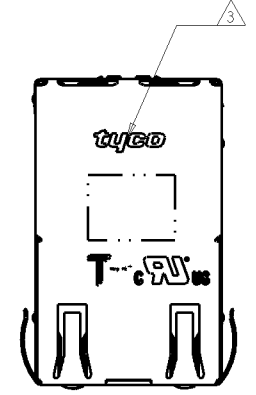
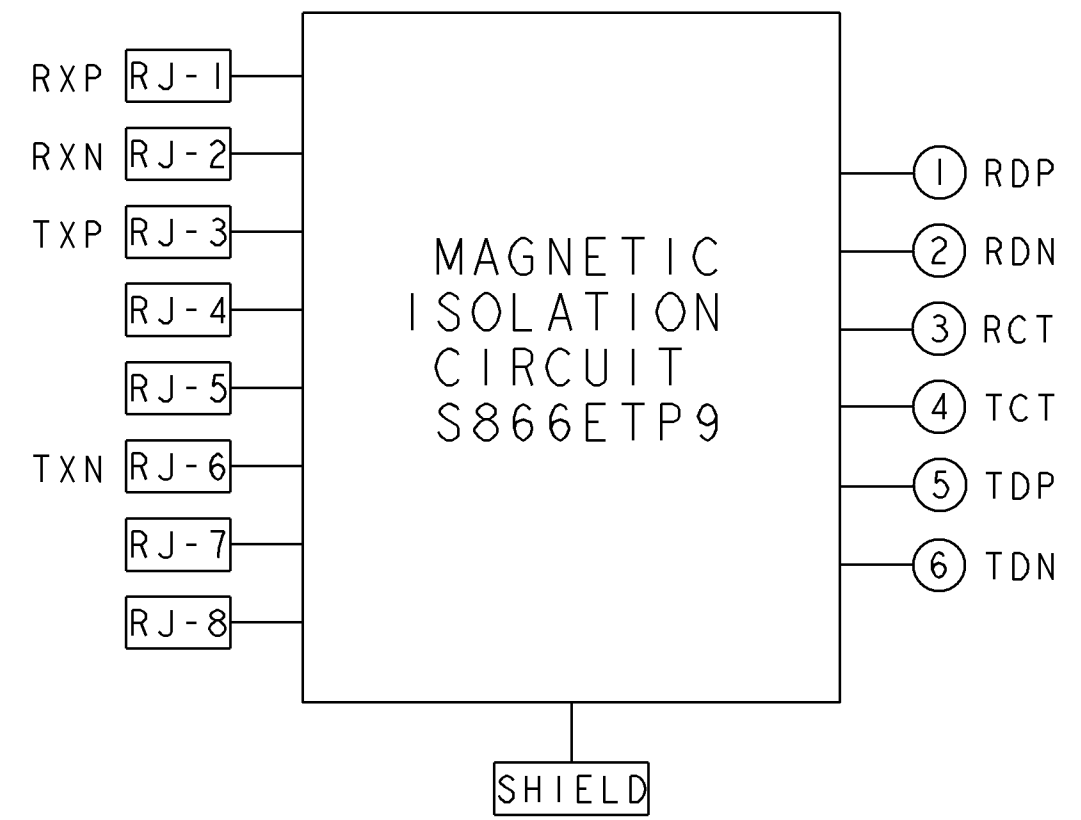


LOC		DIST		REVISIONS			
AA	00	REV	DESCRIPTION	DATE	BY	CHK	APPV
A			NEW RELEASE	27FEB2006	KK	KZ	
B			ECO-06-007097	24MAR2006	KK	KZ	

### S866ETP9 MAGNETIC CIRCUIT STACKED △ △



VIEW R  
SCALE 3:1



**△ MATERIALS:**  
 PLASTIC HOUSING: BLACK, THERMOPLASTIC FLAMMABILITY RATING UL 94V-0  
 SHIELD: BRASS, PLATED WITH 0.76 μm SEMI-BRIGHT NICKEL, POST DIPPED WITH 2.54 μm MIN SAC SOLDER ON SOLDER TAILS  
 CONTACTS: PHOSPHOR BRONZE, 1.27 μm MIN OVERALL NICKEL UNDER PLATE WITH SELECT 1.27 μm MIN GOLD AT MATING INTERFACE AND 2.54 μm MIN MATTE TIN ON SOLDER TAILS.  
 LED: DIFFUSED EPOXY LENS, CARBON STEEL LEAD FRAME  
 LEADS PREPLATED WITH 2.03 μm MIN SILVER OVER 1.02 μm MIN NICKEL UNDERPLATE OVER 1.02 μm MIN COPPER UNDERPLATE. POST-PLATED WITH 2.54 μm MIN MATTE TIN AND/OR SAC SOLDER DIP OR PURE TIN SOLDER DIP  
 INTERNAL MAGNETICS PC BOARDS: HIGH TEMP PCB, TG>170°C

**△ MAGNETICS**  
 APPLICATION: 10/100 BASE-T  
 IMPEDANCE: 100 OHMS  
 TURNS RATIO (CHIP:CABLE): TX = 1:1, RX = 1:1  
 OPEN CIRCUIT INDUCTANCE (OCL): 350μH MIN @100kHz, 0.1VRMS, 8mA DC BIAS FROM -40°C TO +85°C, TX AND RX  
 PERFORMANCE @ 25°C:  
 INSERTION LOSS (IL): 1.1dB MAX FROM 0.5MHz TO 100MHz  
 RETURN LOSS (RL): 18dB MIN FROM 0.5MHz TO 30MHz  
 18-20LOG(f/30)dB MIN FROM 30.1MHz TO 60MHz  
 12dB MIN FROM 60.1MHz TO 80MHz  
 CROSSTALK ATTENUATION: 35dB MIN FROM 0.5MHz TO 40MHz  
 33-20LOG(f/50)dB MIN FROM 40.1MHz TO 100MHz  
 COMMON MODE REJECTION RATIO (CMRR): 30dB MIN FROM 0.5MHz TO 100MHz  
 ISOLATION VOLTAGE: COMPLIES WITH IEEE802.3 2002, PARA 23.5.1.1, ITEM a or b.

**△ PART NO. ; DATE CODE; TYCO, TRANSPOWER, AND AGENCY APPROVAL LOGOS TO BE MARKED IN APPROX LOCATION SHOWN.**

4. OPERATING TEMPERATURE: FROM -40° C TO +85° C.

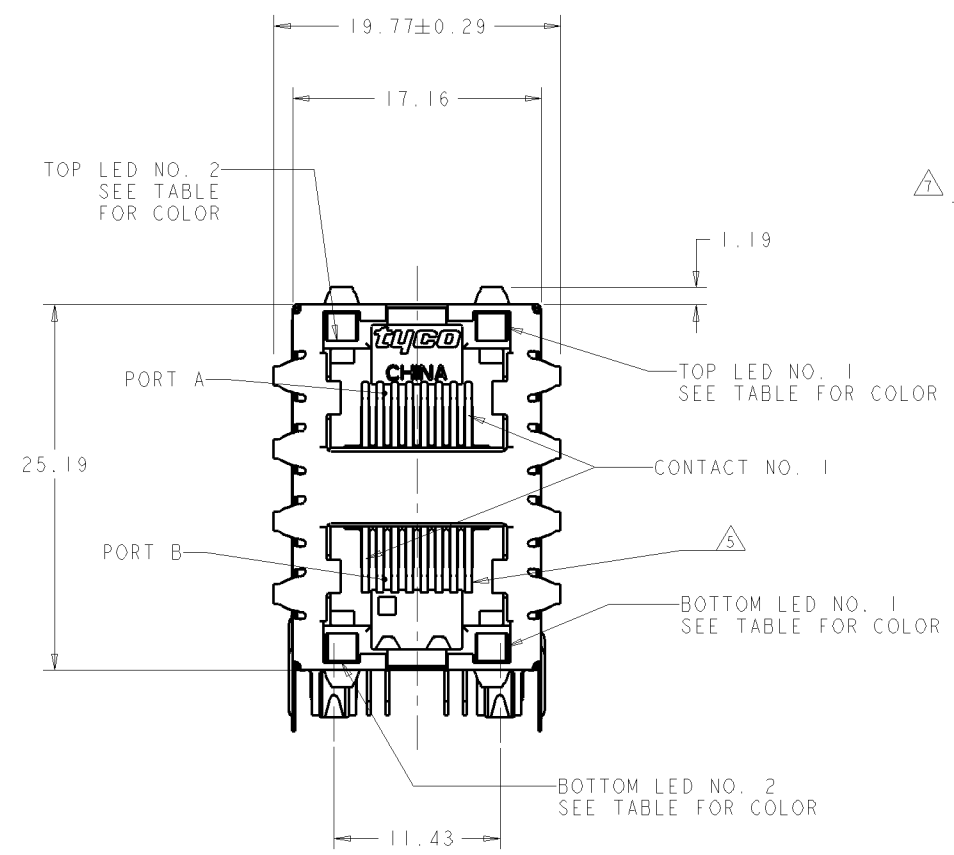
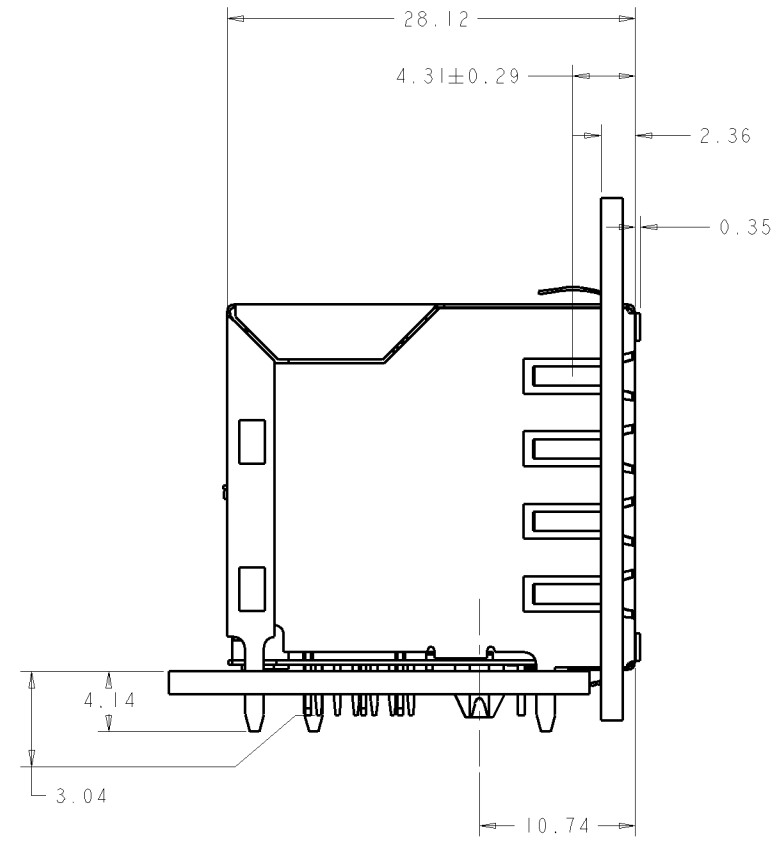
**△ RJ45 CAVITY CONFORMS TO FCC RULES AND REGULATION PART 68 SUBPART F.**

6. LED'S COMPLIANT WITH IEC60825-1 SAFETY OF LASER PRODUCTS WHEN OPERATED AT CURRENT OF 20 mA MAX.  
 LED IS DRIVEN WITH CONSTANT CURRENT AT APPROX 20mA.  
 LED COLOR:

DOMINANT WAVELENGTH (λD): GREEN 568 nm TYP @IF=20mA  
 FORWARD VOLTAGE (VF): GREEN 2.2V TYP @ IF=20mA

DOMINANT WAVELENGTH (λD): YELLOW 588 nm TYP @IF=20mA  
 FORWARD VOLTAGE (VF): YELLOW 2.1V TYP @ IF=20mA

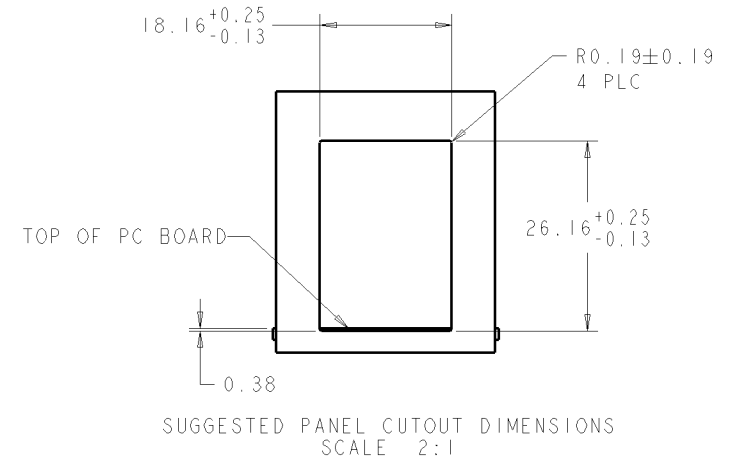
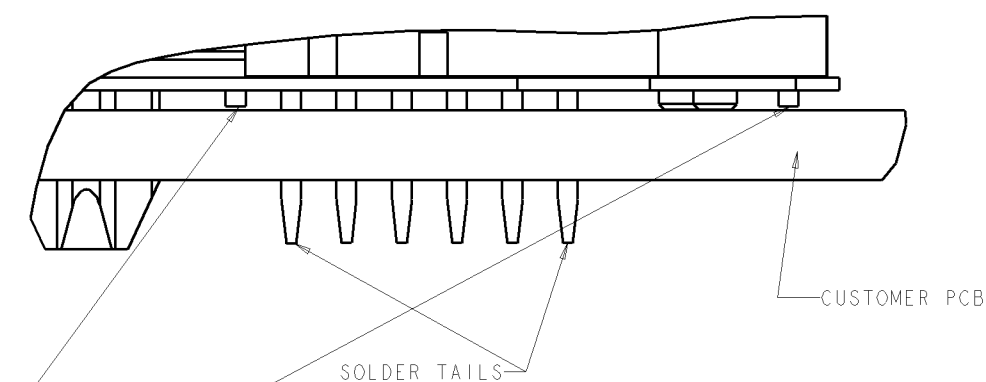
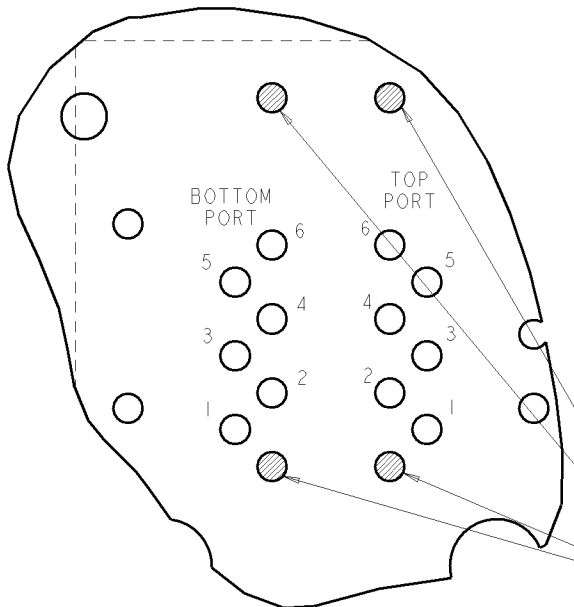
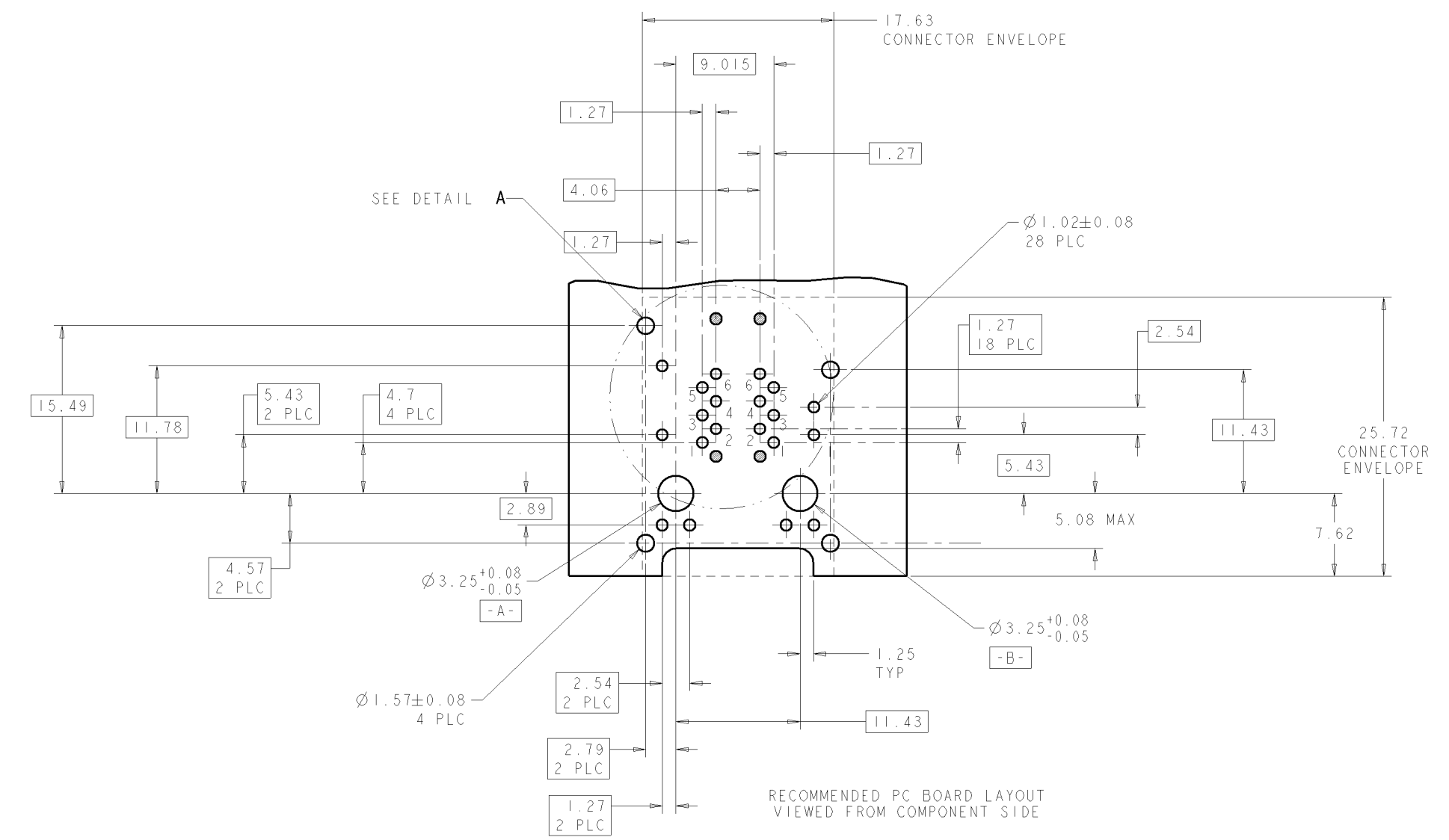
**△ INDICATED CONNECTIONS ARE FOR HUB CONFIGURATION. THE MAGNETICS ARE SYMMETRICAL AND SUPPORT AUTO-MDI/MDIX.**



GRN/YEL	GRN/YEL	GRN/YEL	GRN/YEL	1840123-4
GREEN	YELLOW	GREEN	YELLOW	1840123-3
YELLOW	GREEN	GREEN	YELLOW	1840123-2
GREEN	GREEN	GREEN	GREEN	1840123-1
BOTTOM LED NO. 2	BOTTOM LED NO. 1	TOP LED NO. 2	TOP LED NO. 1	PART NO.

DIMENSIONS: mm [INCHES]		TOLERANCES UNLESS OTHERWISE SPECIFIED		DWN: KK YOU 27FEB2006		CHK: K ZHU 27FEB2006		APVD: K ZHU 27FEB2006		NAME: 2X1 MAG45TM, 10/100 S866ETP9 W/LEDS WAVE PANEL GROUND SHIELD	
0 PLC	±0.25	1 PLC	±0.25	2 PLC	±0.25	3 PLC	±0.25	4 PLC	±0.25	5*	±0.25
MATERIAL: △		FINISH: △		WEIGHT: -		SCALE: A 00779		DRAWING NO: C-1840123		RESTRICTED TO: -	
CUSTOMER DRAWING				SCALE: NTS		SHEET: 1 OF 3		REV: B			

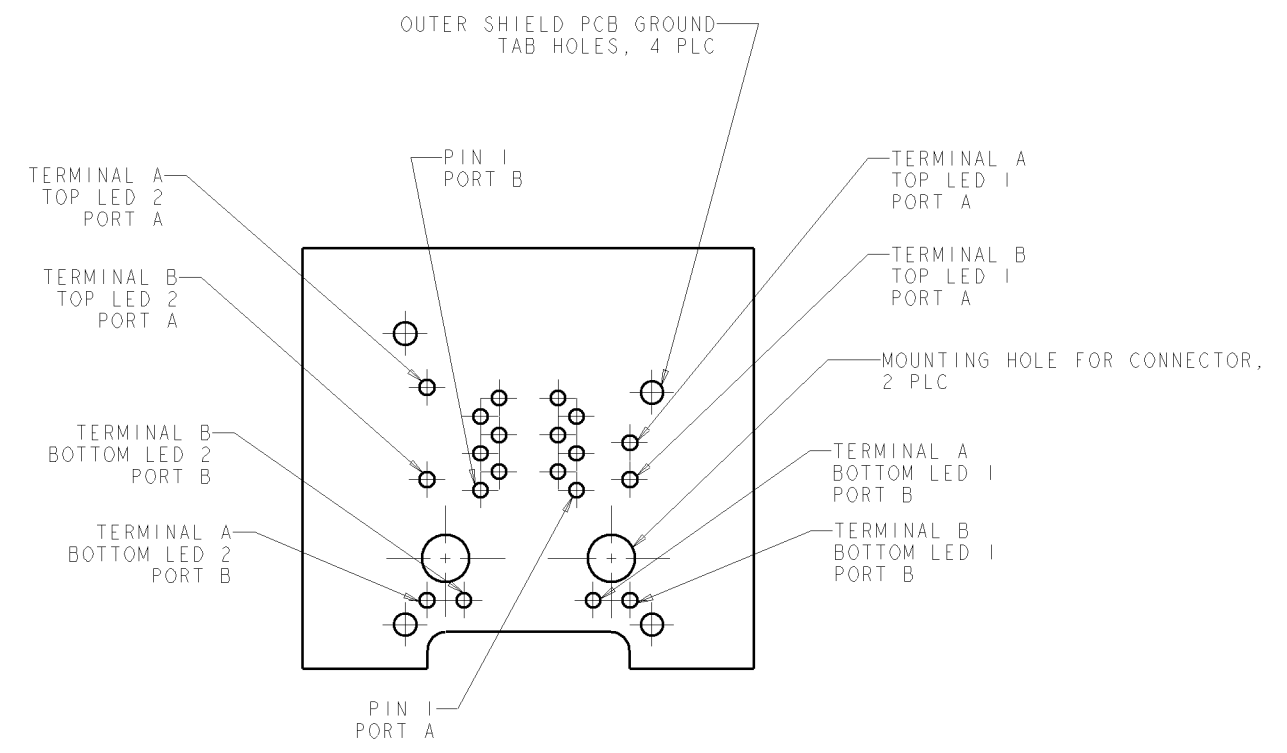
LOC	DIST	REVISIONS				
AA	00	REV	DESCRIPTION	DATE	OWN	APP'D
			SEE SHEET 1			



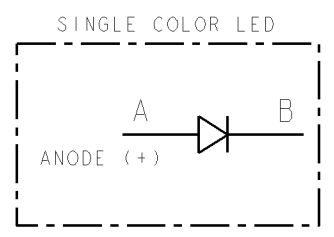
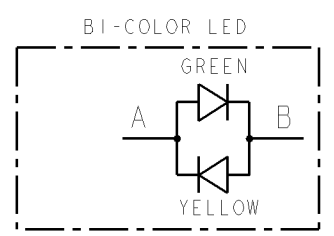
PIN #0 & PIN #10 ON MOD JACK ARE STUB PINS WITH LENGTH SIMILAR TO PCB STANDOFF HEIGHT. PRECAUTIONS SHOULD BE TAKEN IN PCB DESIGN TO GUARD AGAINST SHORTING TRACES TO STUB PINS.

DIMENSIONS: mm [INCHES]		TOLERANCES UNLESS OTHERWISE SPECIFIED		DWN K. YOU 27FEB2006		Tyco Electronics Transpower, China	
		0 PLC	±0.25	CEN K. ZHU 27FEB2006		NAME 2X1	
		1 PLC	±0.25	APVD K. ZHU 27FEB2006		PRODUCT SPEC 108-2100	
		2 PLC	±0.25	APPLICATION SPEC		SIZE A	
		3 PLC	±0.25	MATERIAL		CAGE CODE 00779	
		4 PLC	±0.25	FINISH		DRAWING NO. 1840123	
		5 PLC	±0.25	WEIGHT		RESTRICTED TO	
		6 PLC	±0.25	CUSTOMER DRAWING		SCALE NTS	
		7 PLC	±0.25			SHEET 2 OF 3	
		8 PLC	±0.25			REV B	

LOC	DIST	REVISIONS				
AA	00	REV	DESCRIPTION	DATE	OWN	APP'D
		-	SEE SHEET 1	-	-	-



LED HOLE DESIGNATIONS VIEWED FROM COMPONENT SIDE  
 SCALE 4:1



DIMENSIONS: mm [ INCHES ]		TOLERANCES UNLESS OTHERWISE SPECIFIED: 0 PLC ±0.25 1 PLC ±0.25 2 PLC ±0.25 3 PLC ±0.25 4 PLC ±0.25		DWN: K YOU 27FEB2006 CDR: K ZHU 27FEB2006 APVD: K ZHU 27FEB2006		Tyco Electronics Transpower, China	
MATERIAL: - FINISH: -		WEIGHT: -		NAME: 2X1 PRODUCT SPEC: 108-2100 APPLICATION SPEC: -		SIZE: A1 CASE CODE: 00779 DRAWING NO: C=1840123	
CUSTOMER DRAWING				SCALE: NTS		SHEET 3 OF 3 REV B	