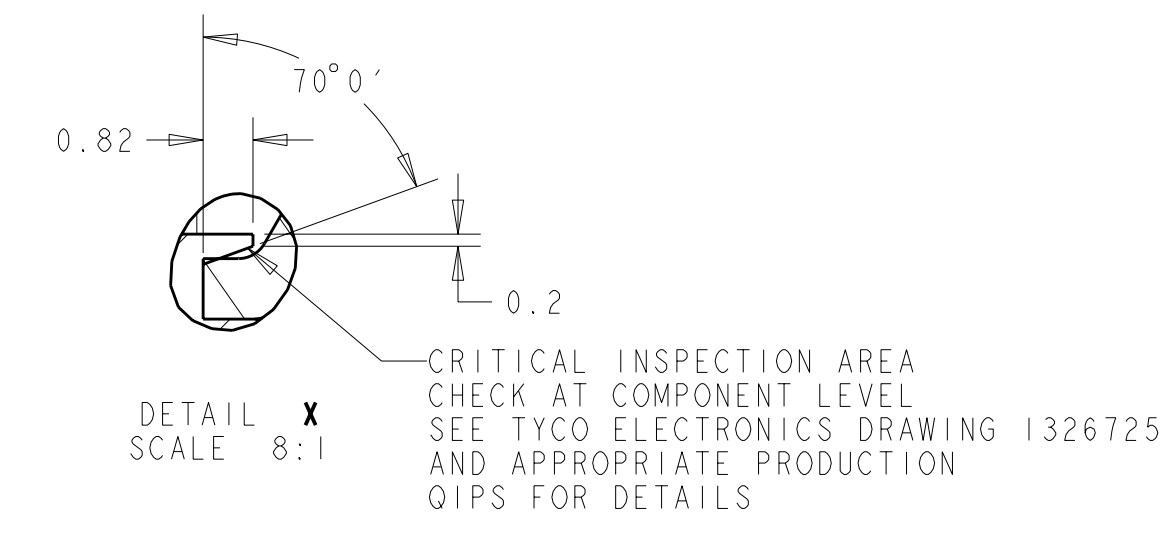
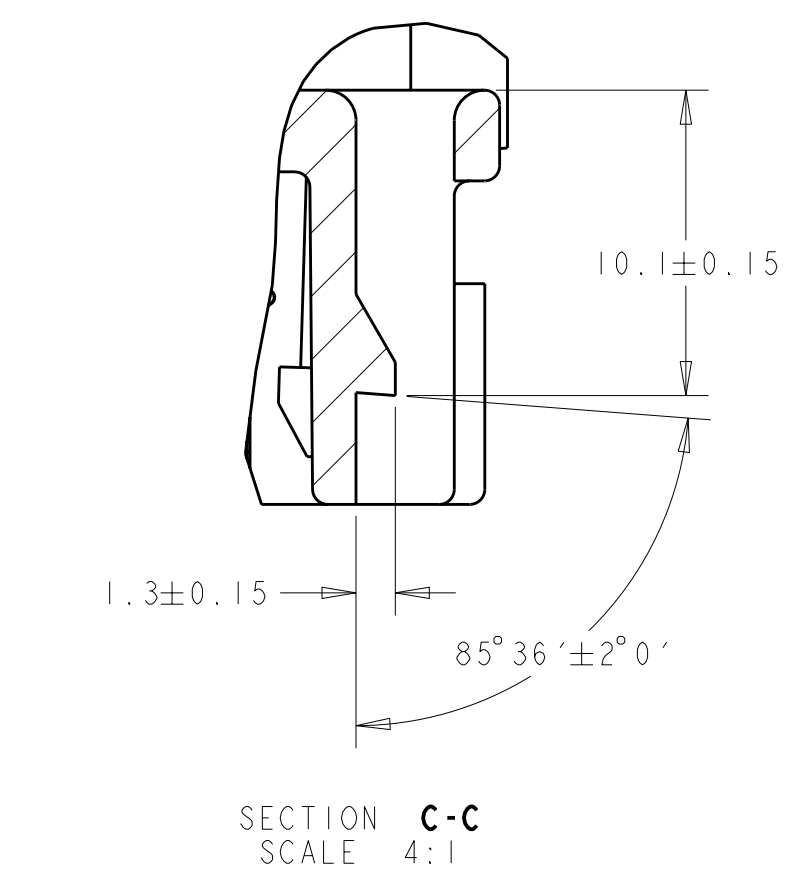
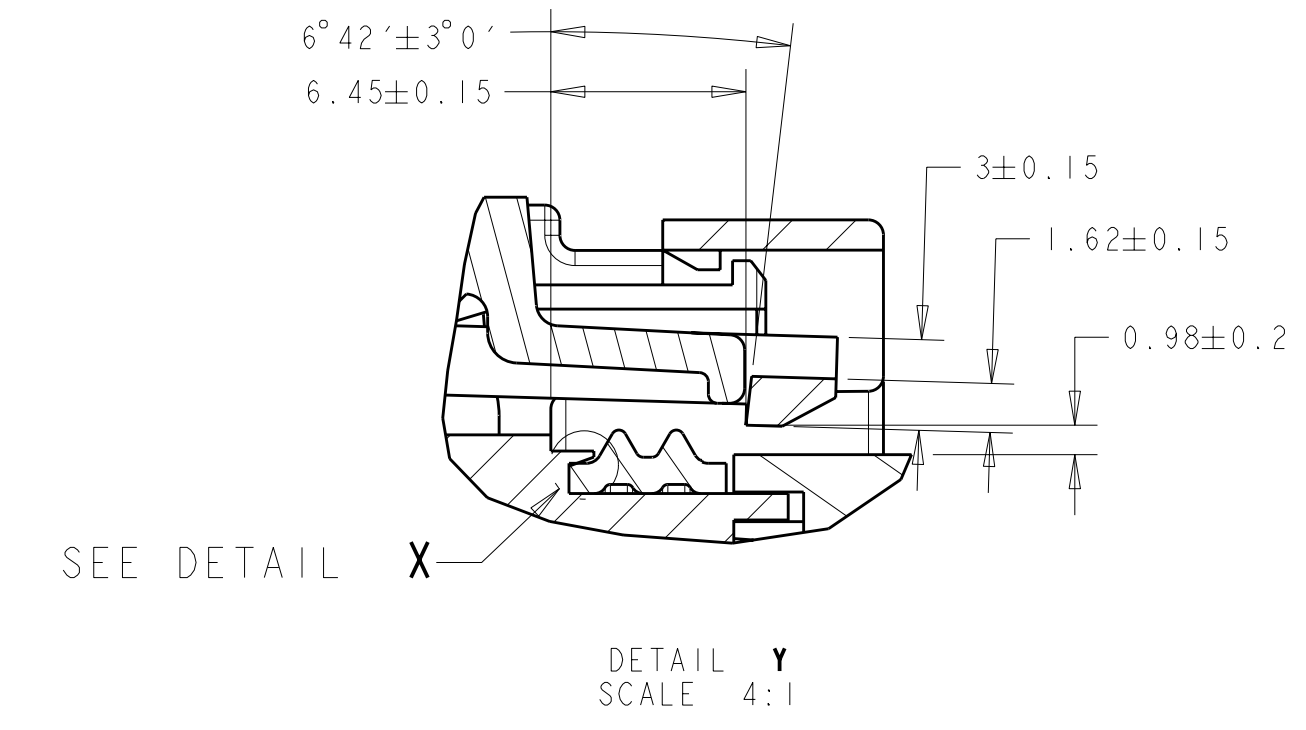
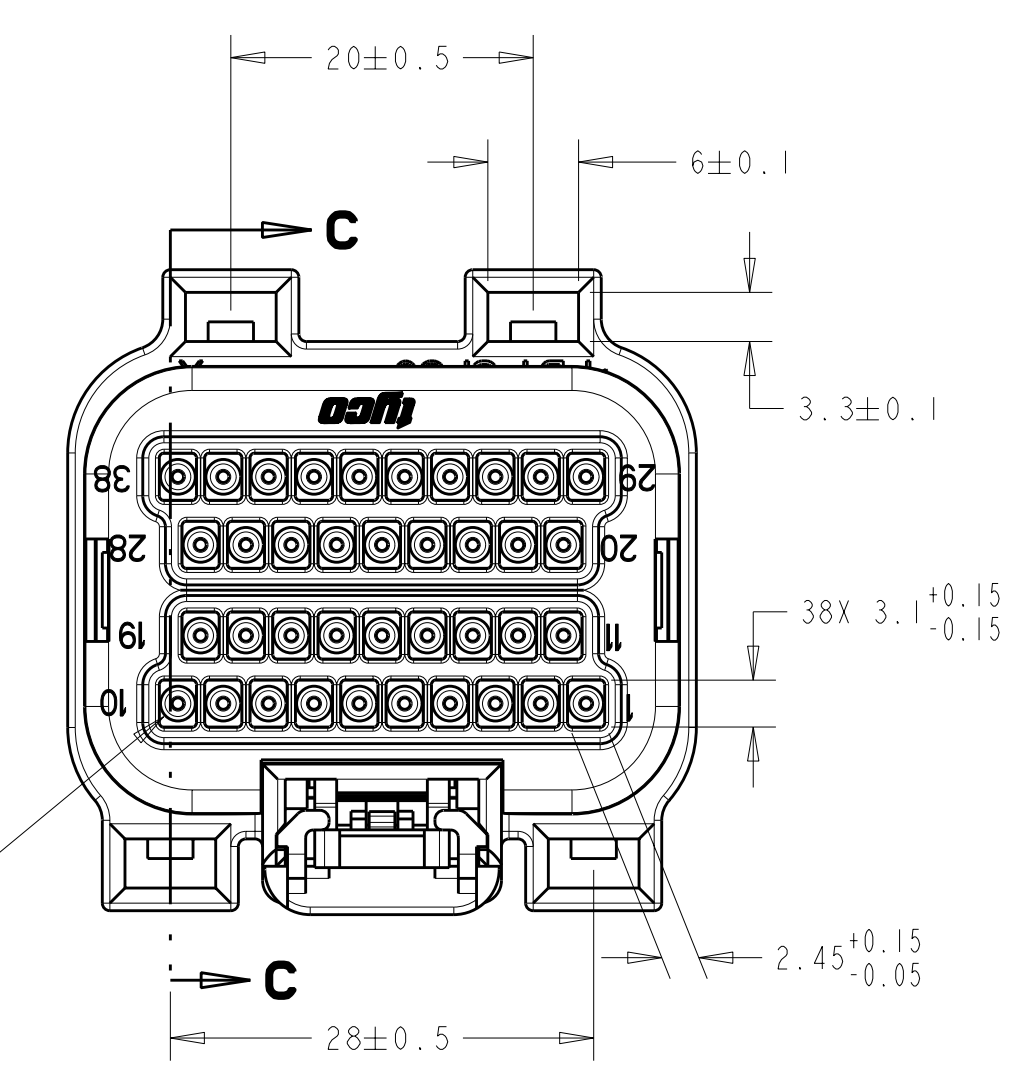


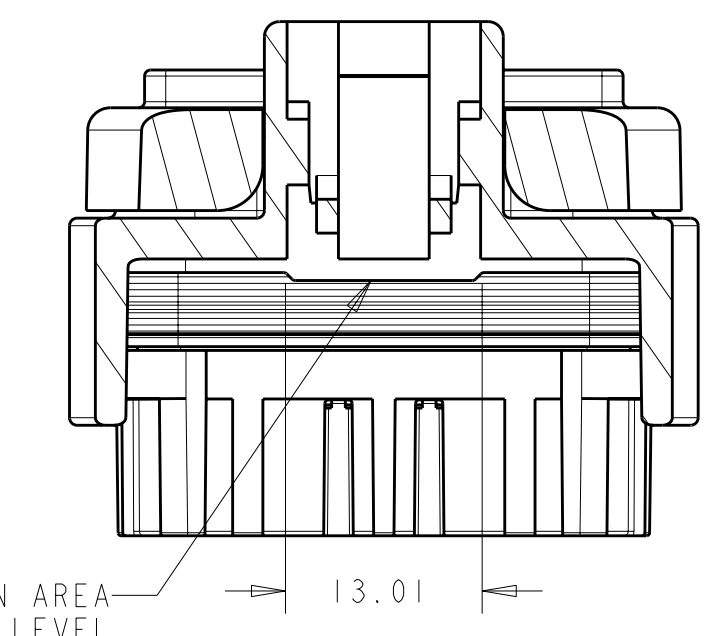
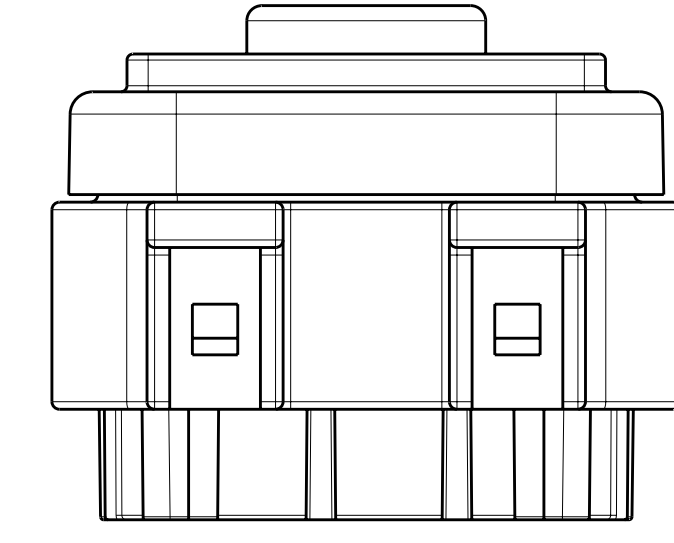
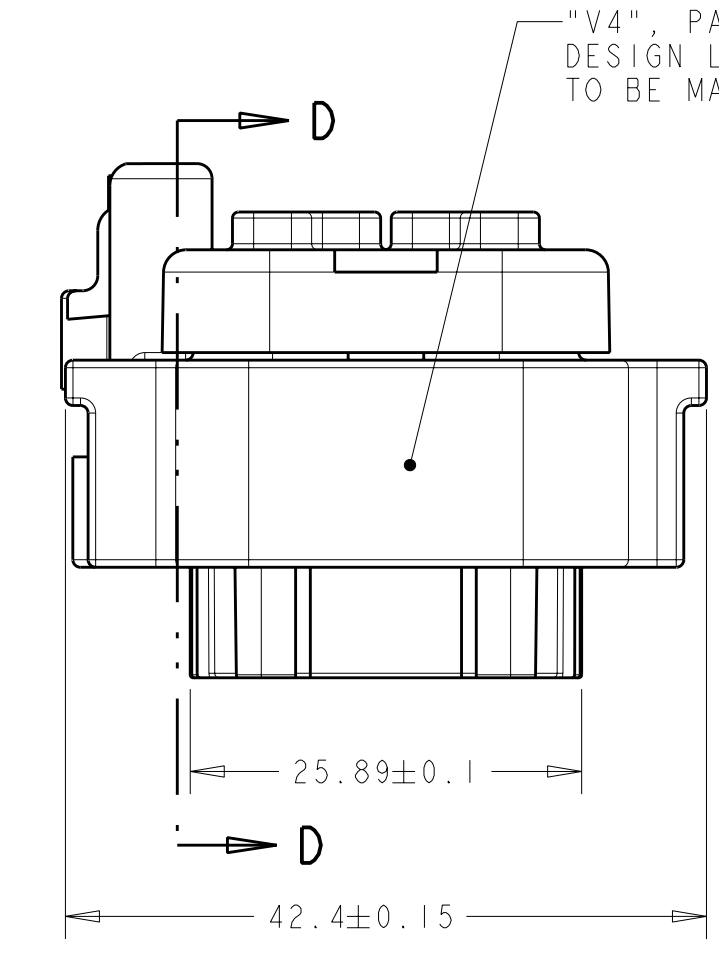
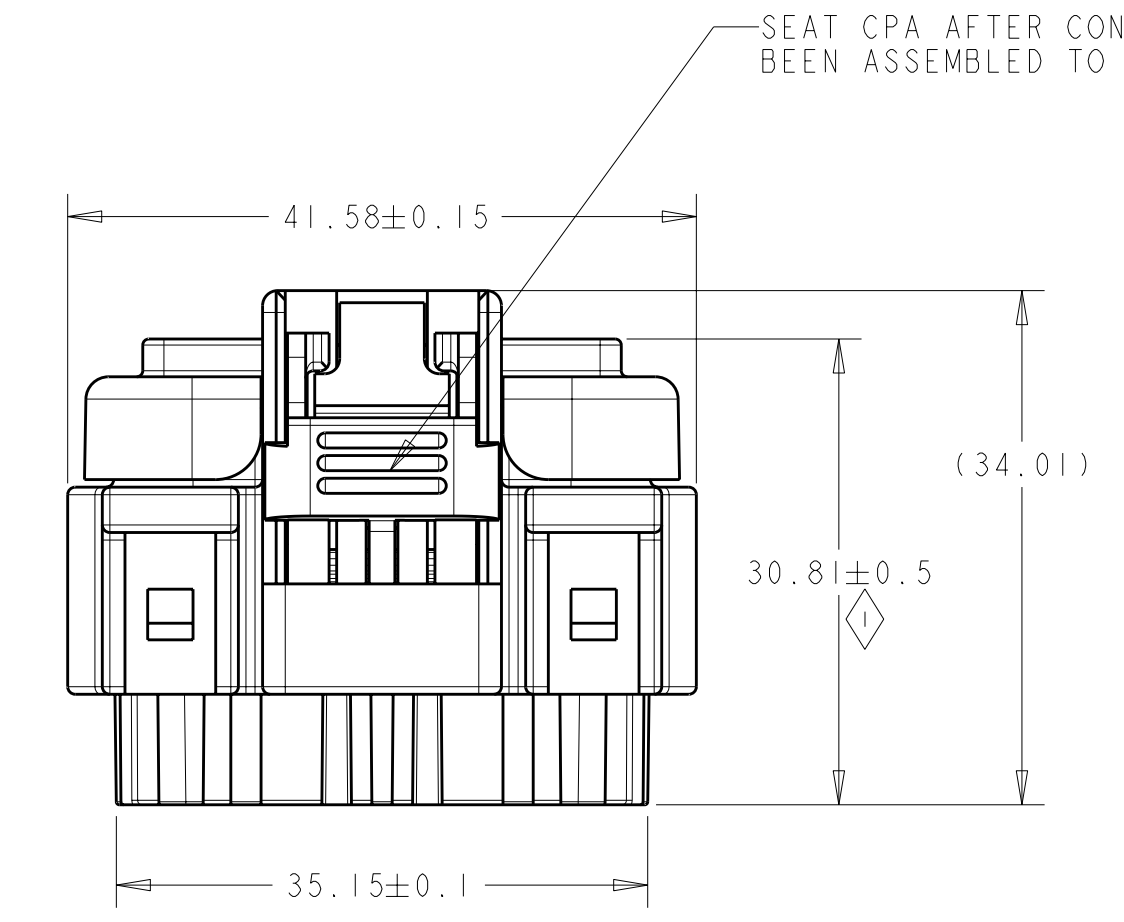
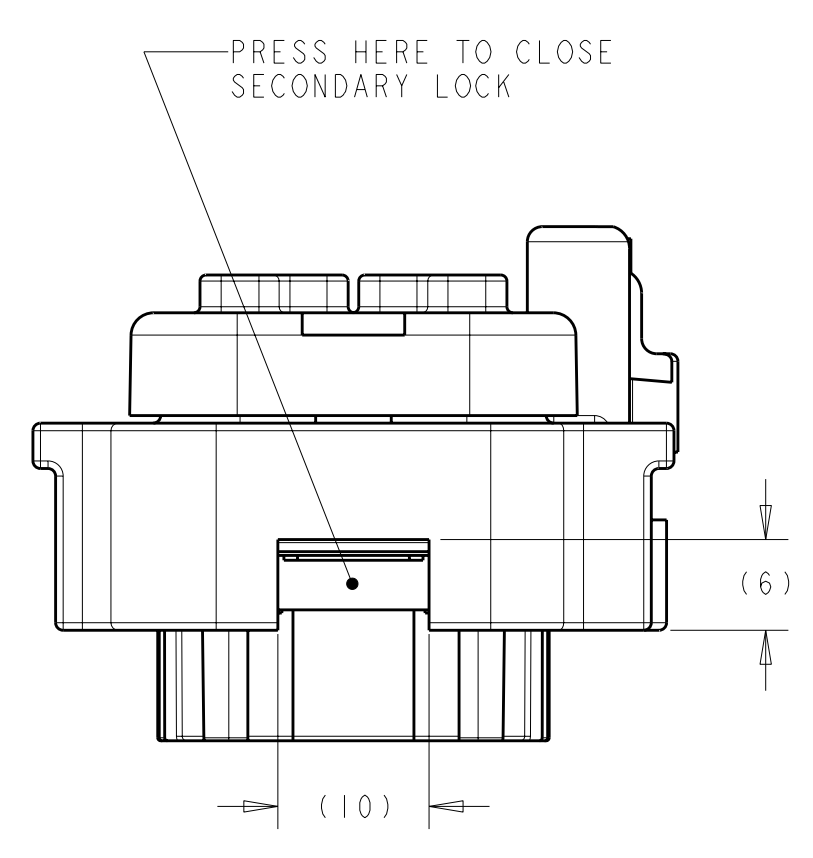
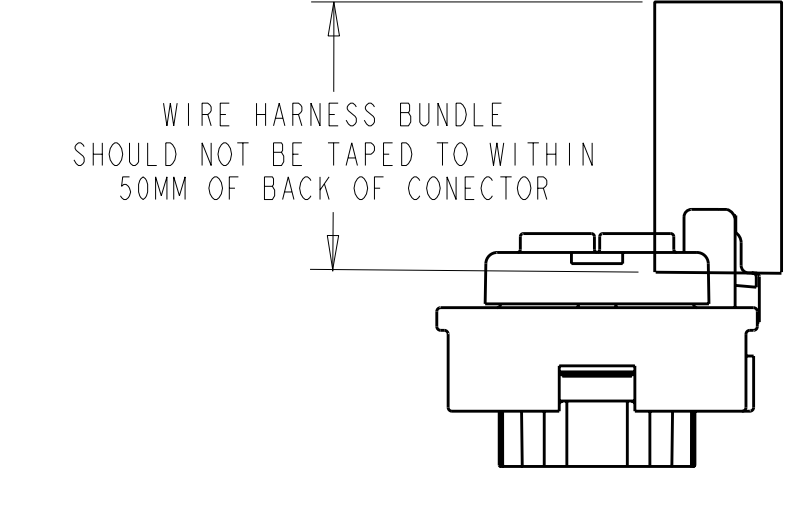
REV	DATE	DESCRIPTION	BY	CHK	APPD
K13	REVISED PER ECO 07-024931				
K14	REVISED PER ECO 08-002152				
K15	REVISED PER ECO-08-021725				
K16	REVISED PER ECO-09-002757				



PUNCHED OUT TERMINAL CAVITIES ON COVER PLUG PLATE.
0.3MM MAXIMUM ALLOWABLE BURR AFTER PUNCHING OPERATION.
2.85MM MINIMUM DISTANCE FROM BURR TIP TO BURR TIP
INSIDE SUB-CAVITY AFTER PUNCHING OPERATION.
ALLOWABLE BURR IS NOT TO AFFECT TERMINAL INSERTION
EFFORTS OR SEALABILITY OF GROMMET SEAL



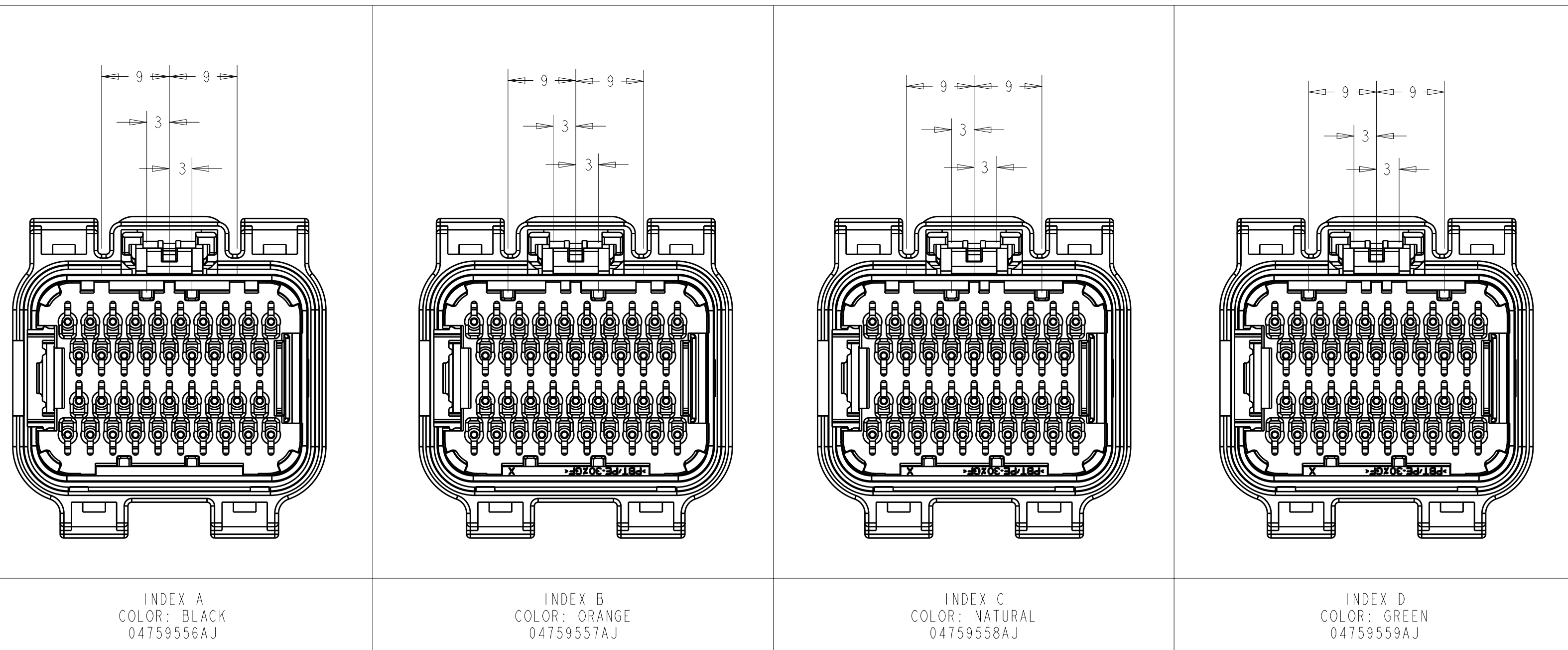
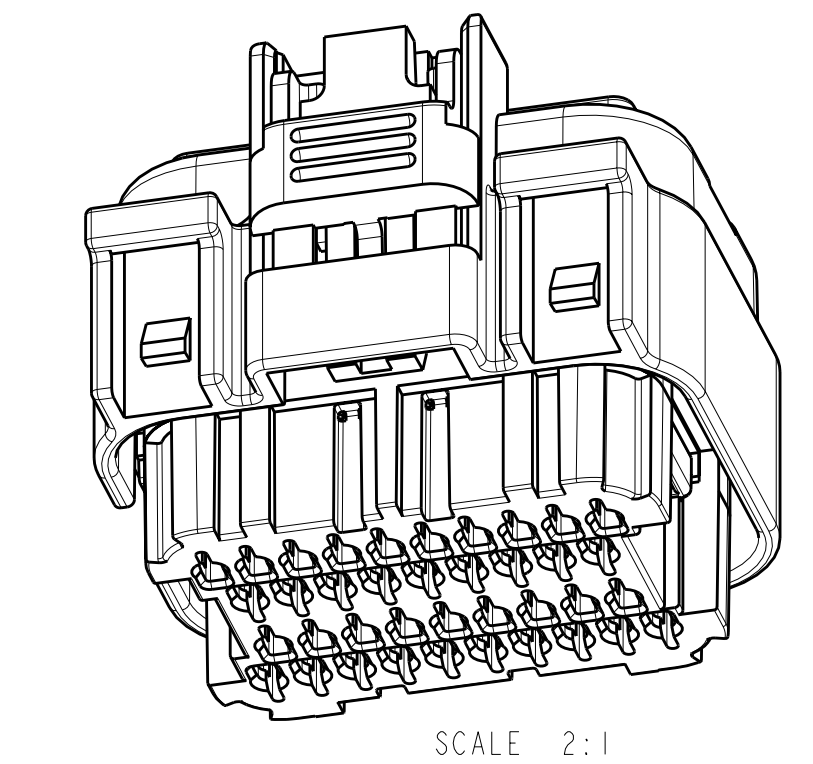
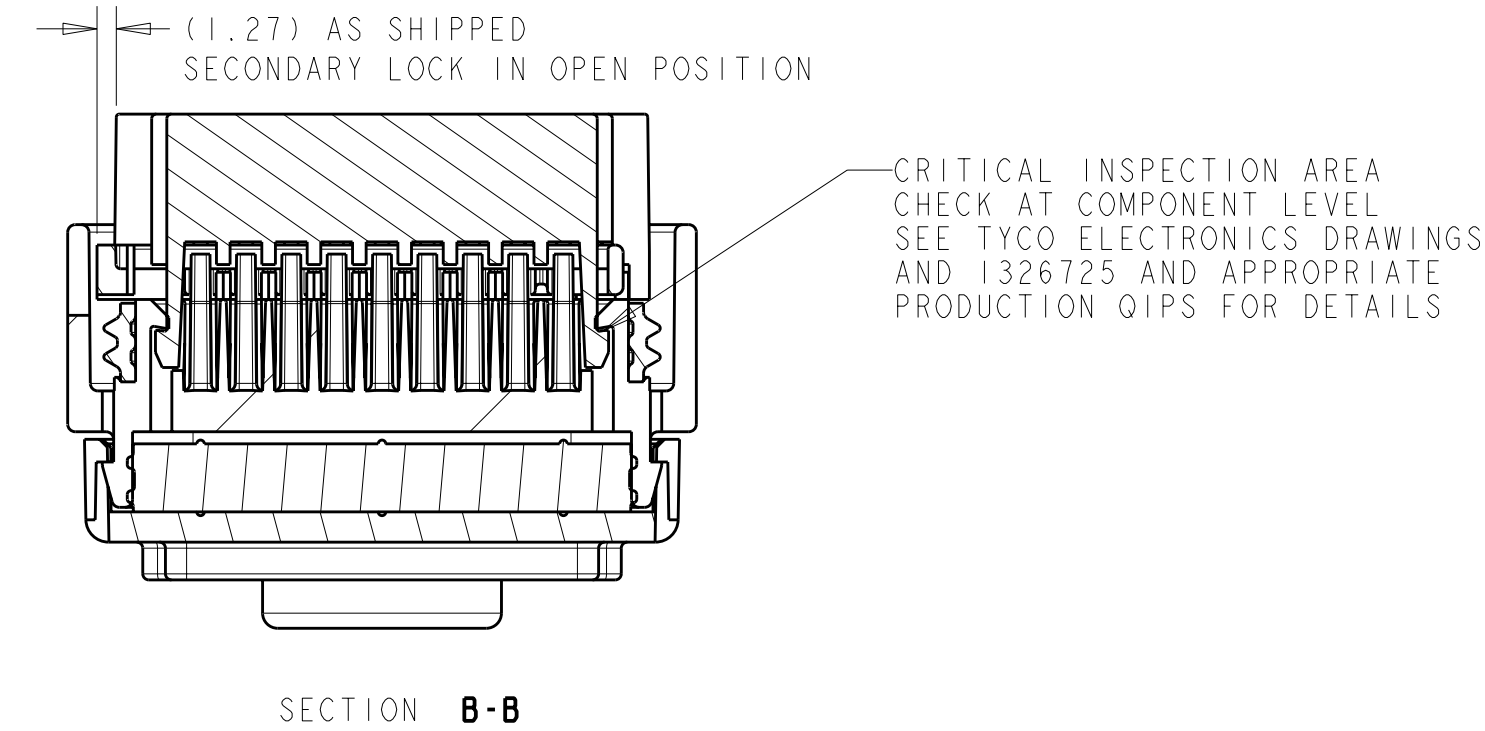
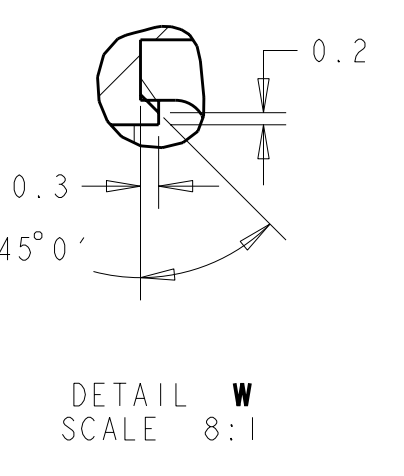
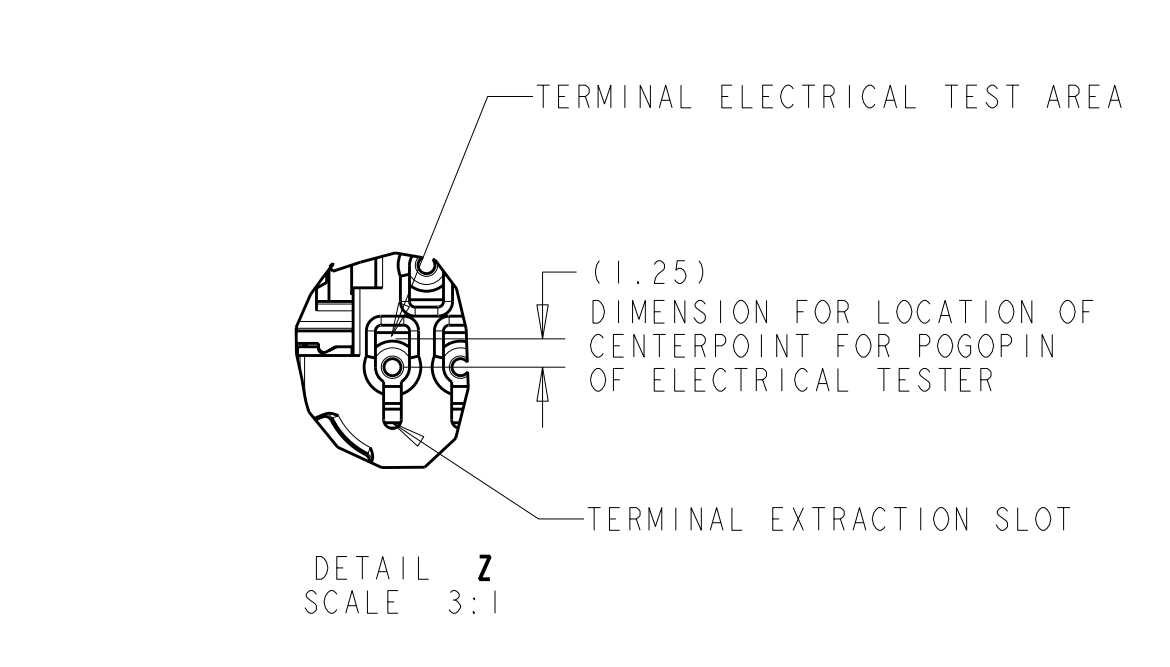
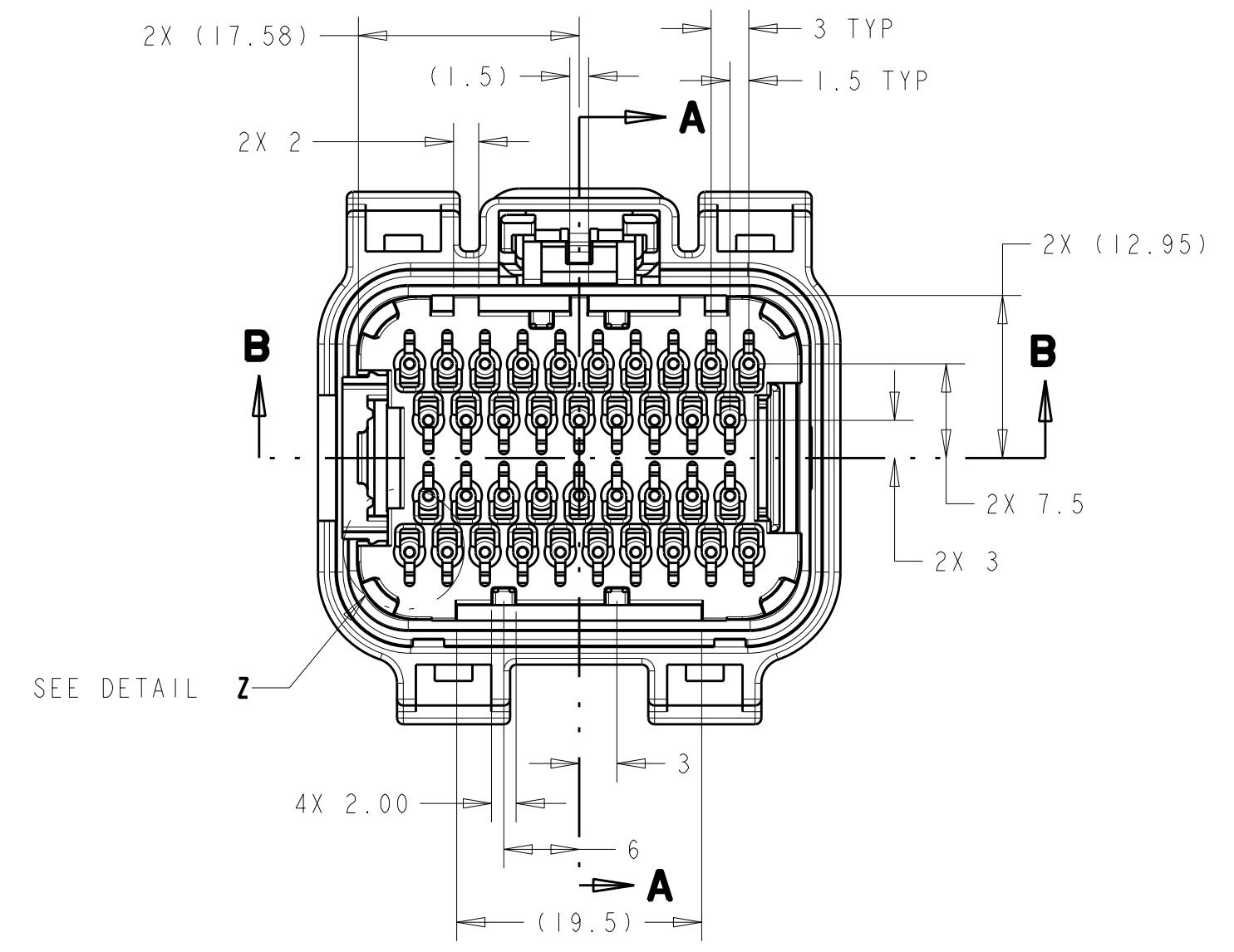
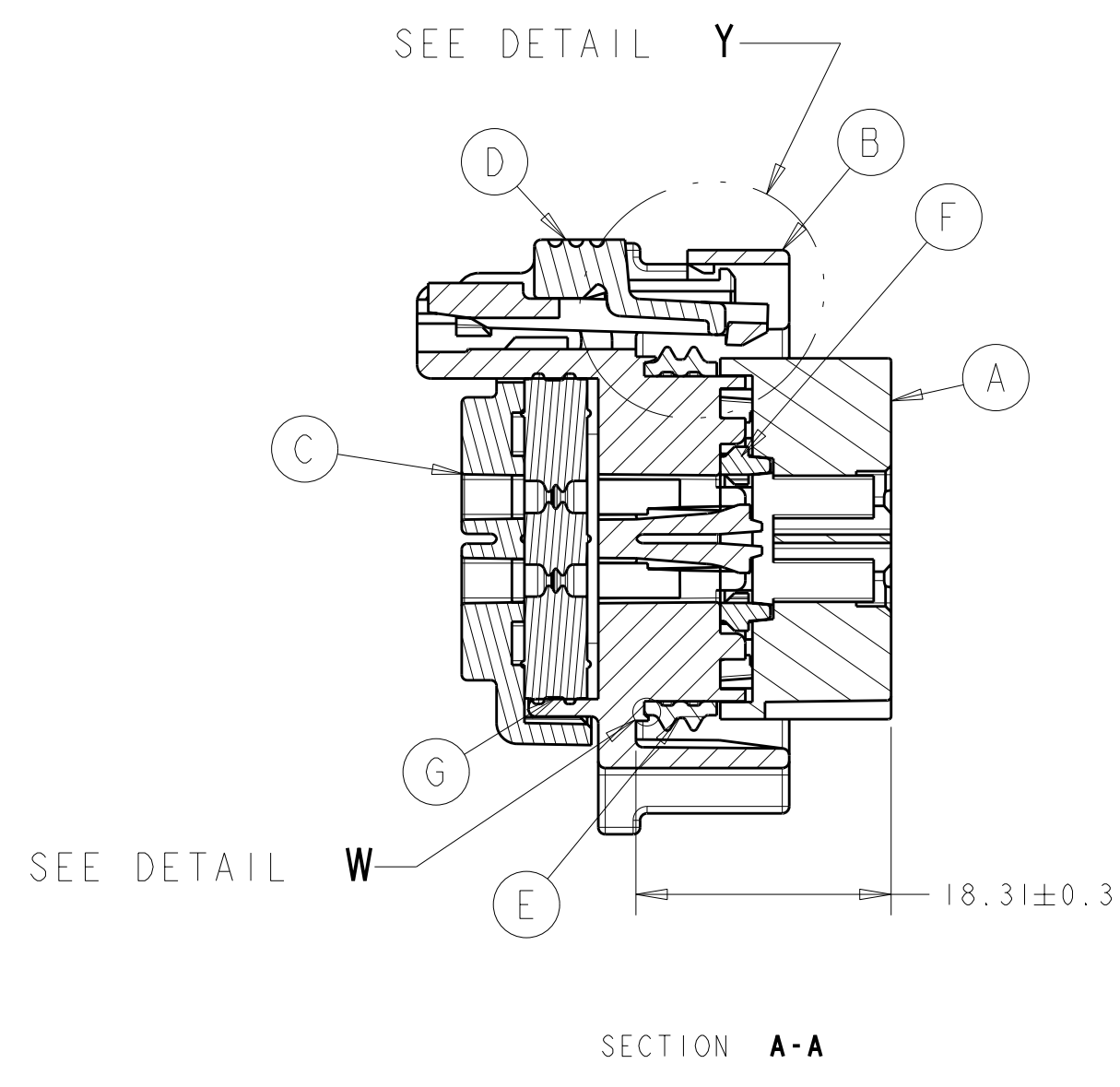
WIRE HARNESS BUNDLE SHOULD ONLY BE SPOT TAPED TO THE WIRE DRESS COVER



CRITICAL INSPECTION AREA
CHECK AT COMPONENT LEVEL
SEE TYCO ELECTRONICS DRAWING 1326725
AND APPROPRIATE PRODUCTION
QIPS FOR DETAILS

SECTION D-D
SCALE 2:1

- GENERAL ENGINEERING NOTE(S):
- ALL DIMENSIONS TO SHARP CORNERS WITH A RADIUS ARE TAKEN FROM THEORETICAL SHARP CORNERS UNLESS EXPLICITLY SHOWN OTHERWISE.
 - TO BE USED WITH:
TERMINAL P/N 04608783AA (GOLD PLATING) S/O 04608783AA
WIRE DRESS COVERS CHRYSLER P/N 04759777AB, 04608776AB, 04608779AA, 04608788AB, 04608809AA, 04759606AB AND TYCO ELECTRONICS P/N 4-1437839-8, 4-1437839-9
CAVITY PLUG P/N 04759943AB
20-16 GAUGE THIN WALL X-LINK WIRE (MS-8288)
 - COVER/PLUG PLATE CAN BE PUNCHED OUT IN ANY CONFIGURATION FOR CURRENT COVER/PLUG PLATE CONFIGURATION SEE TYCO ELECTRONICS DRAWING NUMBER 1326726. CHRYSLER P/N'S 04759556AJ, 04759557AJ, 04759558AJ, AND 04759559AJ HAVE ALL COVER/PLUG PLATE TERMINAL CAVITIES OPEN AND MUST BE USED WITH CAVITY PLUG P/N 04759943AB.
 - TERMINAL EXTRACTION TOOL P/N 8638
SUPPLIER: SPX MILLER SPECIAL TOOLS
28635 MOUND ROAD
WARREN MI. 48092
 - SECONDARY LOCK TO BE IN OPEN POSITION PRIOR TO REMOVING TERMINALS.
 - WIRING FABRICATORS MUST PURCHASE FROM SOURCES SHOWN.
 - MATES TO HEADER P/N'S 05087006AB, 05087007AB, 05087008AA, AND 05087009AA.
 - PART MUST BE FREE OF FLASH AND BURRS.
 - FEATURES TO BE GAGED AT THE SUB-COMPONENT LEVEL:
MAIN BODY - PRIMARY LOCKING FINGER
 - 15 LB MINIMUM FORCE REQUIRED TO OPEN SECONDARY LOCK.
 - TO PREVENT TERMINAL DAMAGE TO THE NGC CONNECTOR, VEHICLE LEVEL DIAGNOSTIC WORK MUST BE DONE USING PINOUT BOX P/N 8815. SUPPLIER SPX MILLER SPECIAL TOOLS.
 - THE WIRE HARNESS BUNDLE SHOULD NOT BE TAPED WITHIN 50 MM OF THE BACK OF THE CONNECTOR.
 - THE WIRE HARNESS BUNDLE SHOULD ONLY BE SPOT TAPED TO THE WIRE DRESS COVER SNOOT.
 - DAIMLERCHRYSLER DESIGN LEVEL IS "A". THE DESIGN LEVEL WILL INCREASE WITH ANY CHANGE TO THE PARTS FORM, FIT, OR FUNCTION.



MATERIAL	DESCRIPTION	COLOR	COMPONENTS NEEDED	ITEM NO
30% GLASS FILLED PBT	INSULATOR SHELL INDEX A	BLACK	X	A
30% GLASS FILLED PBT	INSULATOR SHELL INDEX B	ORANGE	X	A
30% GLASS FILLED PBT	INSULATOR SHELL INDEX C	NATURAL	X	A
30% GLASS FILLED PBT	INSULATOR SHELL INDEX D	GREEN	X	A
30% GLASS FILLED PBT	MAIN BODY	BLACK	X X X X	B
30% GLASS FILLED PBT	COVER / PLUG PLATE	BLACK	X X X X	C
30% GLASS FILLED NYLON	CPA	RED	X X X X	D
SELF LUBRICATING SILICONE	INTERFACIAL SEAL	LT BLUE	X X X X	E
30% GLASS FILLED SPS	SECONDARY LOCK	RED	X X X X	F
SELF LUBRICATING SILICONE	GROMMET SEAL	LT BLUE	X X X X	G

TYCO ELECTRONICS ASSY/REV NUMBER	CHRYSLER ASSEMBLY NUMBER
9-1326726-8	04759556AJ
9-1326727-8	04759557AJ
9-1326728-8	04759558AJ
9-1326729-8	04759559AJ

INDICATES CHRYSLER LEVEL CHANGE

CHRYSLER DRAWING NUMBER: 04759644AJ
CHRYSLER DRAWING REVISION LEVEL: A

PRINT CONTROLLED BY DAIMLERCHRYSLER
CHANGES MUST BE SUBMITTED TO
DAIMLERCHRYSLER ENGINEERING FOR APPROVAL

FOR CONNECTOR PIN-OUT INFORMATION
SEE TABLES ON SHEET 2

<p>TYCO ELECTRONICS CORPORATION</p> <p>1500 W. WASHINGTON AVENUE</p> <p>ANN ARBOR, MI 48106-1500</p> <p>TEL: 734.769.2000</p> <p>FAX: 734.769.2001</p> <p>WWW.TYCOELECTRONICS.COM</p>	<p>DATE: 08/08/08</p> <p>REV: 00</p> <p>BY: [Signature]</p> <p>CHK: [Signature]</p> <p>APPD: [Signature]</p> <p>PROJECT SPEC: [Signature]</p> <p>APPLICATION SPEC: [Signature]</p> <p>REWORK: [Signature]</p> <p>CUSTOMER DRAWING</p>	<p>DATE: 11SEP2003</p> <p>BY: X_DEKOSKI</p> <p>CHK: X_DEKOSKI</p> <p>APPD: X_BAUMAN</p> <p>PROJECT SPEC: [Signature]</p> <p>APPLICATION SPEC: [Signature]</p> <p>REWORK: [Signature]</p> <p>CUSTOMER DRAWING</p>	<p>TYCO ELECTRONICS</p> <p>Harrisburg, PA 17105-3608</p> <p>CHART ASSEMBLY</p> <p>38-WAY FEMALE, NGC HEADER CONNECTION</p> <p>SCALE: 2:1</p> <p>SHEET 1 OF 3</p>
---	---	--	--

