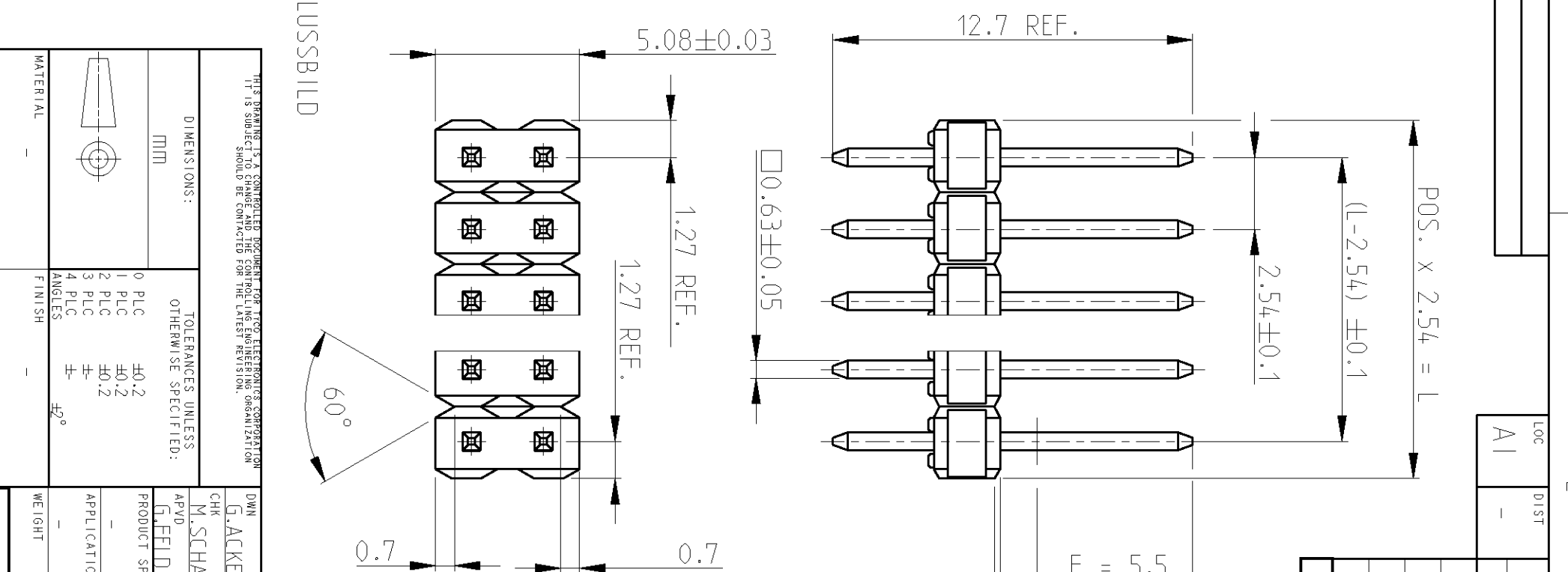
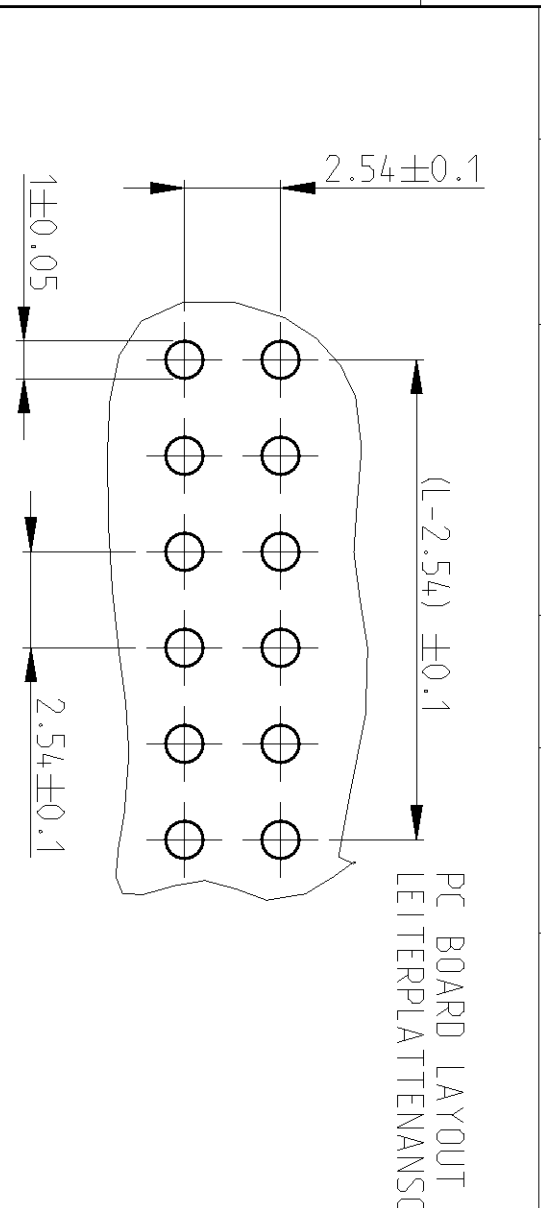


POS. PER ROW	L ±0.5	PART - NO.	POS. PER ROW	L ±0.5	PART - NO.
-	-	-	26	66.04	2-829 394-6/2
2	5.08	829 394-2	27	68.58	-7/2
3	7.62	-3	28	71.12	-8/2
4	10.16	-4	29	73.66	9/2
5	12.70	-5	30	76.20	-0/2
6	15.24	-6	31	78.74	-1/2
7	17.78	-7	32	81.28	-2
8	20.32	-8	33	83.82	-3/2
9	22.86	-9	34	86.36	-4/2
10	25.40	-0	35	88.90	-5/2
11	27.94	-1/2	36	91.44	-6/2
12	30.48	2/2	37	93.98	-7
13	33.02	-3	38	96.52	-8
14	35.56	-4/2	39	99.06	-9
15	38.10	-5/3	40	101.60	-0
16	40.64	-6/2	41	104.14	-1
17	43.18	-7	42	106.68	-2
18	45.72	-8/2	43	109.22	-3
19	48.26	-9/2	44	111.76	-4
20	50.80	-0	45	114.30	-5
21	53.34	-1	46	116.84	-6
22	55.88	-2/2	47	119.38	-7
23	58.42	-3/2	48	121.92	-8
24	60.96	-4/2	49	124.46	-9
25	63.50	2-829 394-5	50	127.00	5-829 394-0

LOC	DIST	REV	DESCRIPTION	DATE	DWN	APVD
A1	-	2	3-...-7 UNTIL 5-...-0 ADDED	29SEP1992	A.HO	-
A1	-	1	REDRAWN, CHANGED TO ENGLISH-VERSION	24JUN2005	GA	MS
A2	-	1	UPDATE	06JUL2005	GA	MS
A3	-	1	REVISED PER ECR-09-026495	17DEC09	KK	AEV
A4	-	1	ECR-10-010420	24AUG10	RK	SRE

POS. PER ROW	L ±0.5	PART - NO.	POS. PER ROW	L ±0.5	PART - NO.
-	-	-	26	66.04	2-829 394-6/2
2	5.08	829 394-2	27	68.58	-7/2
3	7.62	-3	28	71.12	-8/2
4	10.16	-4	29	73.66	9/2
5	12.70	-5	30	76.20	-0/2
6	15.24	-6	31	78.74	-1/2
7	17.78	-7	32	81.28	-2
8	20.32	-8	33	83.82	-3/2
9	22.86	-9	34	86.36	-4/2
10	25.40	-0	35	88.90	-5/2
11	27.94	-1/2	36	91.44	-6/2
12	30.48	2/2	37	93.98	-7
13	33.02	-3	38	96.52	-8
14	35.56	-4/2	39	99.06	-9
15	38.10	-5/3	40	101.60	-0
16	40.64	-6/2	41	104.14	-1
17	43.18	-7	42	106.68	-2
18	45.72	-8/2	43	109.22	-3
19	48.26	-9/2	44	111.76	-4
20	50.80	-0	45	114.30	-5
21	53.34	-1	46	116.84	-6
22	55.88	-2/2	47	119.38	-7
23	58.42	-3/2	48	121.92	-8
24	60.96	-4/2	49	124.46	-9
25	63.50	2-829 394-5	50	127.00	5-829 394-0



- 1 IN AREA "F" 0.8 μm GOLD OVER 1.27 μm NICKEL IN AREA "B" IN AREA "C" MIN. 3 μm TIN OVER 1.27 μm NICKEL
- 2 OBSOLETE PARTS: OBSOLETE CIS STREAMLINING PER D.RENAUD/D.SINISI
- 3 OBSOLETE

REMARK	MATERIAL	DESCRIPTION
1	Cu Sn 6	CONTACT PIN KONTAKTSTIFT
2	PBT GV	PINHOUSING
3	UL 94 - V0	STIFTGEHAEUSE

THIS DRAWING IS A CONTROLLER DOCUMENT FOR TYCO ELECTRONICS CORPORATION. IT IS SUBJECT TO CHANGE WITHOUT NOTICE. THE LATEST REVISION SHOULD BE CONTACTED FOR THE LATEST REVISION.

Tyco Electronics
 Tyco Electronics Corporation AMP GmbH
 D - 67346 Speyer

AMP 1470-19 REV 31MAR2000

Pro/ENGINEER DRAWING