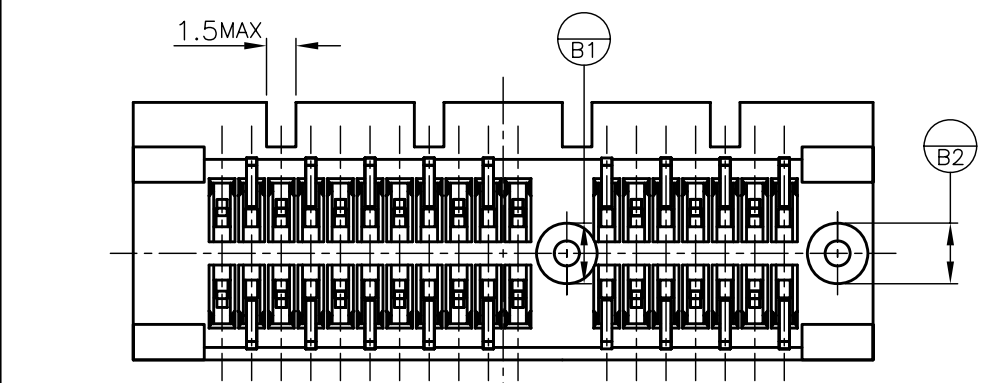
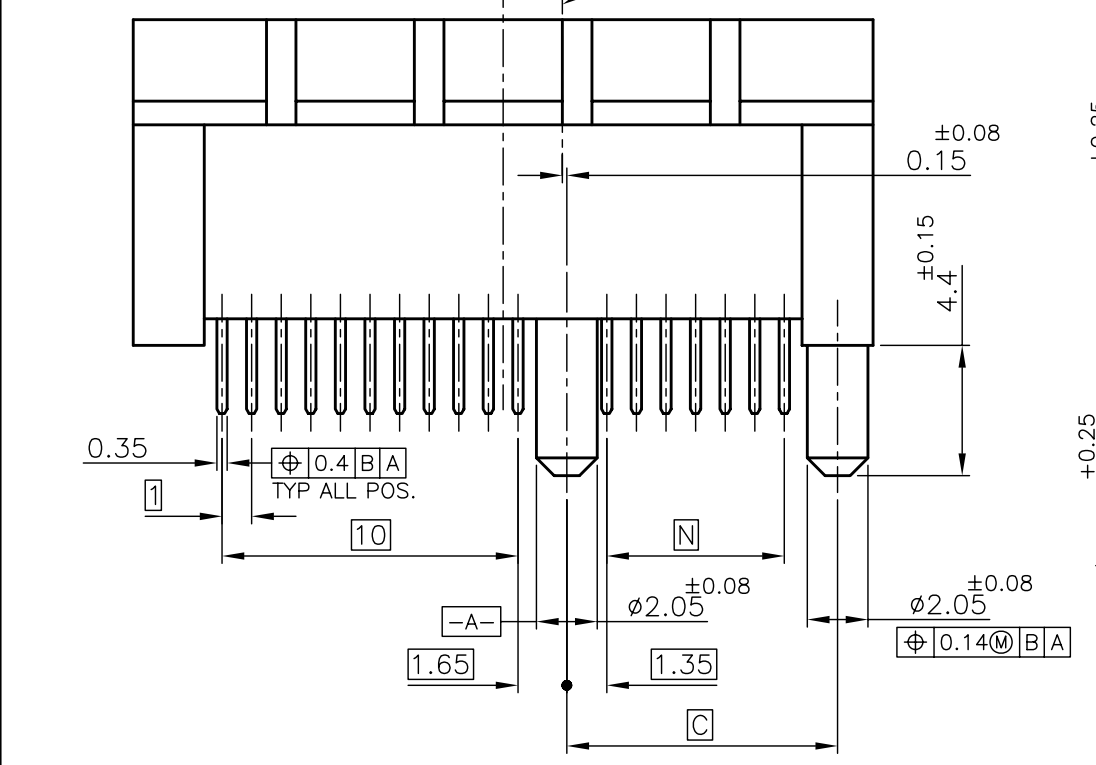
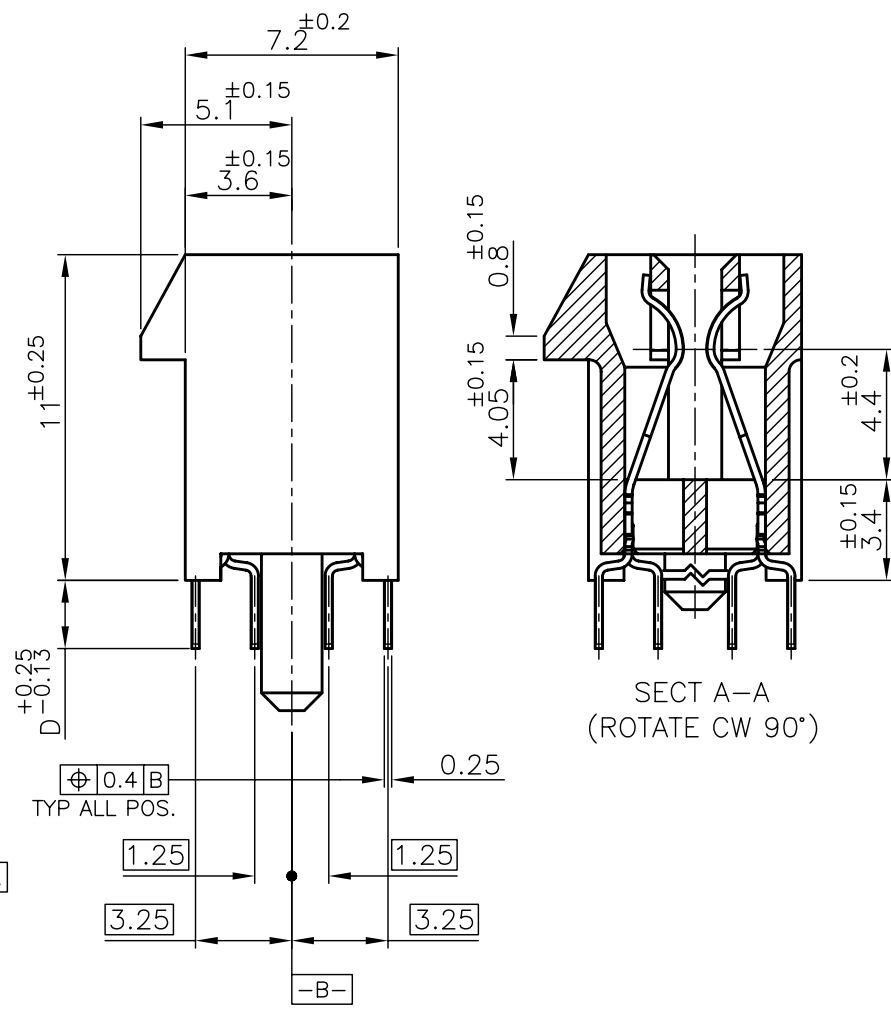
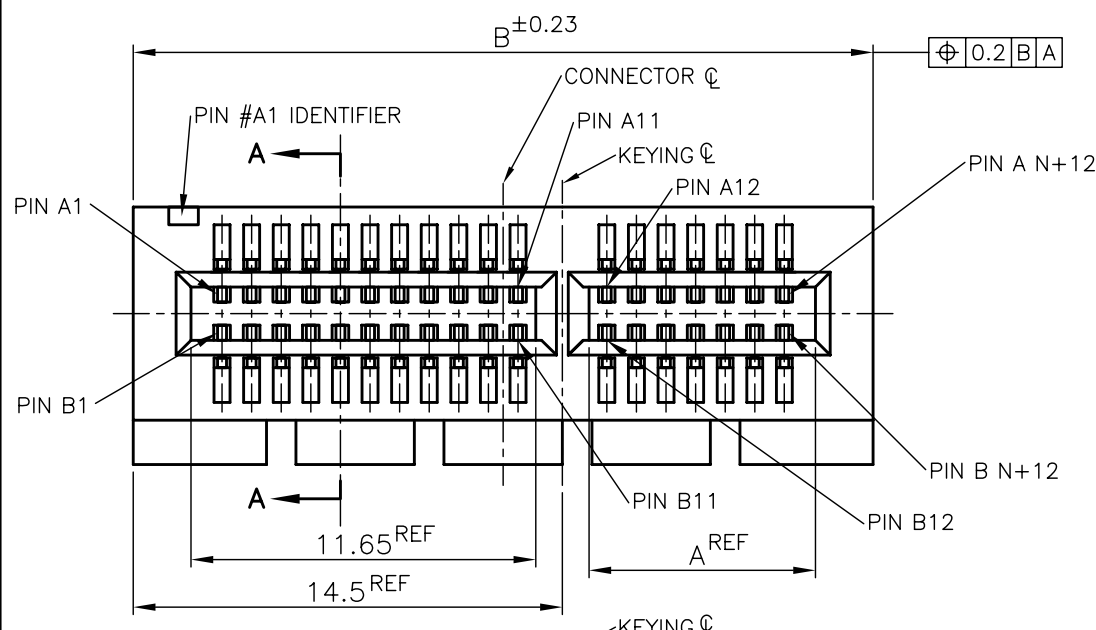


LOC	DIST	REVISIONS			
P	LTR	DESCRIPTION	DATE	DWN	APVD
DW	/	K	REVISED (ECR-08-027874)	04NOV08	B.W W.K

- 1 MATERIAL;
HOUSING: HIGH TEMPERATURE THERMO PLASTIC
UL94V-0, COLOR; BLACK
- 2 CONTACT: COPPER ALLOY
- 3 FINISH;
CONTACT AREA: GOLD PL.0.05μm MIN OVER NICKEL PL.
TINE AREA: MATTE TIN PL. OVER NICKEL PL.
- 4 FINISH;
CONTACT AREA: GOLD PL.0.38μm MIN OVER NICKEL PL.
TINE AREA: MATTE TIN PL. OVER NICKEL PL.
- 4 FINISH;
CONTACT AREA: GOLD PL.0.76μm MIN OVER NICKEL PL.
TINE AREA: MATTE TIN PL. OVER NICKEL PL.
5. CONNECTOR HAS MET THE REQUIREMENTS PER PCI EXPRESS GEN 2 TECHNICAL DOCUMENT.

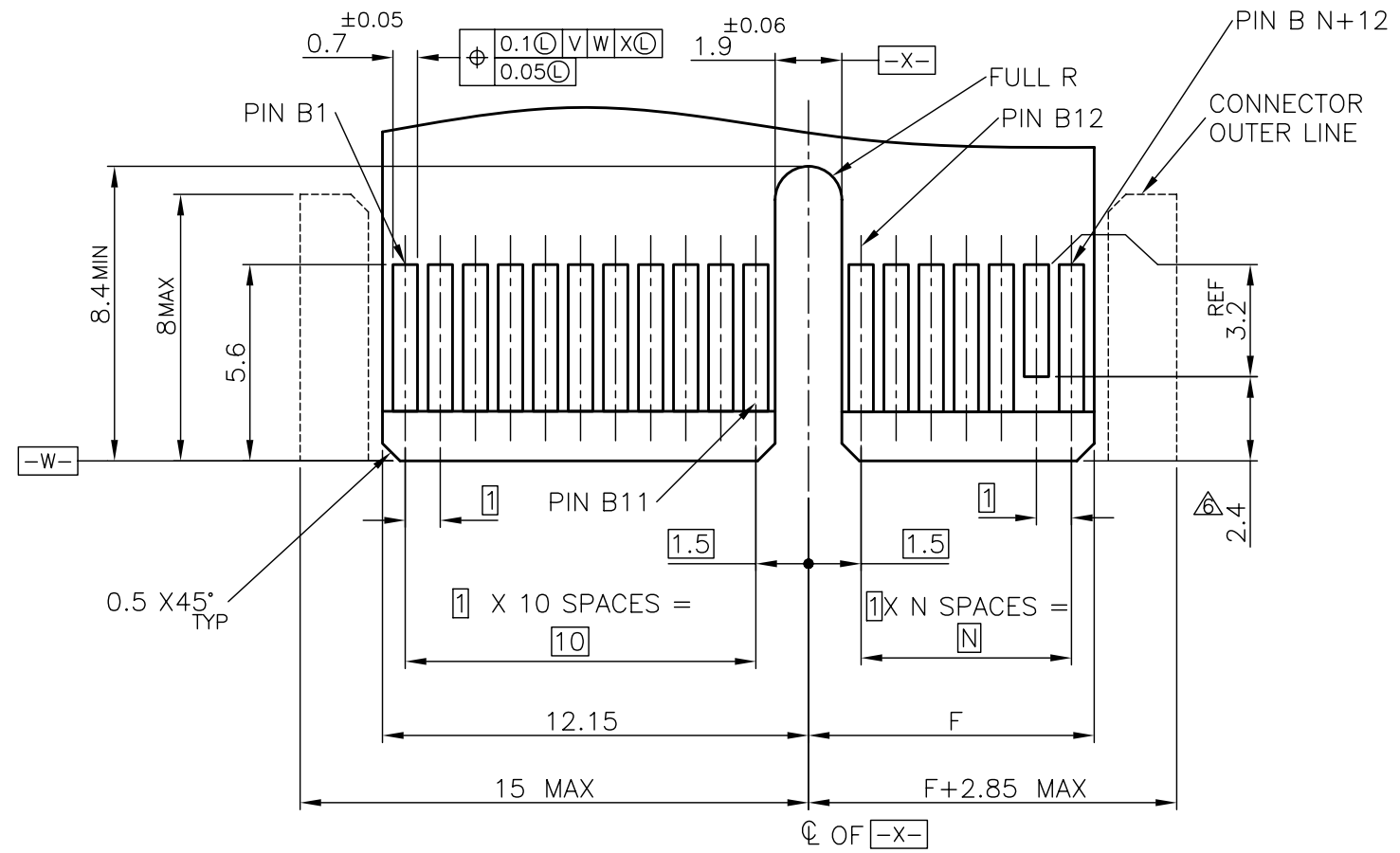


PRODUCING																				
PRODUCING	↑	70	↑	73.15	89	71.65	164	16	8-	↑	-4									
PRODUCING	↑	37		40.15	56	38.65	98	8	8-		-3									
PRODUCING	↑	20		23.15	39	21.65	64	4	8-		-2									
PRODUCING	△	6		9.15	25	7.65	36	1	8-	1612163-1										
PRODUCING	↑	70		73.15	89	71.65	164	16	6-	↑	-4									
PRODUCING	↑	37		40.15	56	38.65	98	8	6-		-3									
PRODUCING	↑	20		23.15	39	21.65	64	4	6-		-2									
PRODUCING	△	6	3.56	9.15	25	7.65	36	1	6-	1612163-1										
PRODUCING	↑	70		73.15	89	71.65	164	16	5-	↑	-4									
PRODUCING	↑	37		40.15	56	38.65	98	8	5-		-3									
PRODUCING	↑	20		23.15	39	21.65	64	4	5-		-2									
PRODUCING	↑	6	3.1	9.15	25	7.65	36	1	5-	1612163-1										
PRODUCING	↑	70		73.15	89	71.65	164	16	4-	↑	-4									
PRODUCING	↑	37		40.15	56	38.65	98	8	4-		-3									
PRODUCING	↑	20		23.15	39	21.65	64	4	4-		-2									
PRODUCING	△	6	2.3	9.15	25	7.65	36	1	4-	1612163-1										
PRODUCING	↑	70		73.15	89	71.65	164	16	3-	↑	-4									
PRODUCING	↑	37		40.15	56	38.65	98	8	3-		-3									
PRODUCING	↑	20		23.15	39	21.65	64	4	3-		-2									
PRODUCING	↑	6	3.1	9.15	25	7.65	36	1	3-	1612163-1										
PRODUCING	↑	70		73.15	89	71.65	164	16	2-	↑	-4									
PRODUCING	↑	37		40.15	56	38.65	98	8	2-		-3									
PRODUCING	↑	20		23.15	39	21.65	64	4	2-		-2									
PRODUCING	△	6	2.3	9.15	25	7.65	36	1	2-	1612163-1										
PRODUCING	↑	70		73.15	89	71.65	164	16	1-	↑	-4									
PRODUCING	↑	37		40.15	56	38.65	98	8	1-		-3									
PRODUCING	↑	20		23.15	39	21.65	64	4	1-		-2									
PRODUCING	↑	6	3.1	9.15	25	7.65	36	1	1-	1612163-1										
PRODUCING	↑	70		73.15	89	71.65	164	16		↑	-4									
PRODUCING	↑	37		40.15	56	38.65	98	8			-3									
PRODUCING	↑	20		23.15	39	21.65	64	4			-2									
PRODUCING	△	6	2.3	9.15	25	7.65	36	1			1612163-1									
TOOLING STATUS	FINISH	N	D	C	B	A	POS.	PORT			P/N									

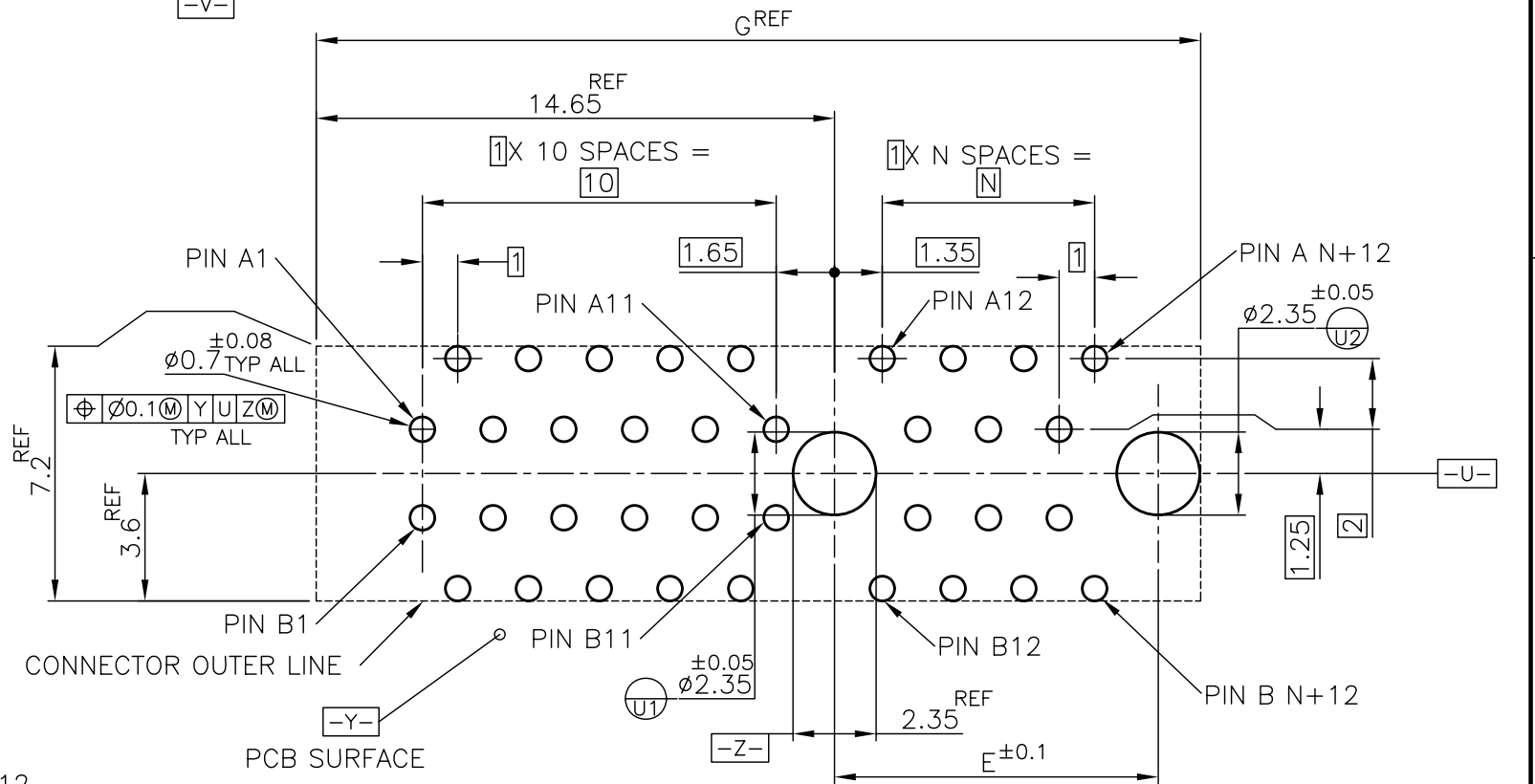
THIS DRAWING IS A CONTROLLED DOCUMENT.

DIMENSIONS: MM	TOLERANCES UNLESS OTHERWISE SPECIFIED:	DWN K.KOBAYASHI 20FEB03	Tyco Electronics Corporation Taipei, Taiwan
0-PLG ± ±0.3	1-PLG ± ±2.3	CHK H.SHIRAI 21FEB03	
2-PLG ± ±	3-PLG ± ±	APVD Y.YAMAMOTO 21FEB03	NAME
4-PLG ± ±	ANGLES ± ±	PRODUCT SPEC	PCI EXPRESS CARD EDGE CONN.
MATERIAL △	FINISH	APPLICATION SPEC	V-TYPE
SEE TABLE		108-5847	SIZE
		WEIGHT	CAGE CODE
		CUSTOMER DRAWING	DRAWING NO
			RESTRICTED TO
			A3 00779 C-1612163
			SCALE 4:1 SHEET 1 OF 2 REV K

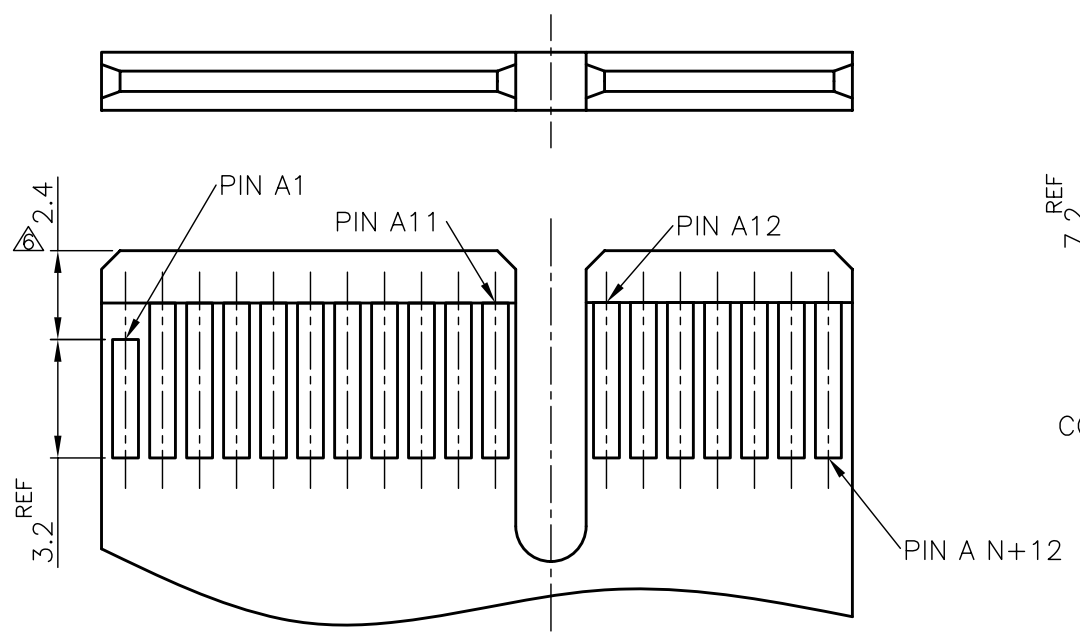
LOC		DIST		REVISIONS			
DW		P	LTR	DESCRIPTION	DATE	DWN	APVD
				SEE SHEET 1			



- 6 THIS DIMENSION IS ONLY APPLIED TO PRSNT PINS.
- 7 CARD THICKNESS APPLIES ACROSS TABS AND INCLUDES PLATING AND/OR METALIZATION.
- 8 CHAMFER EDGES MUST BE FREE OF CUTTING BURRS.
- 9 NO TIE BAR PERMITTED FROM CARD EDGE TO LEADING EDGE OF PAD FOR PRSNT PIN.
- 10 APPLICATION NOTE;
GOLD CONTACT PAD : ELECTROLESS GOLD PLATING 0.05μm MIN.
OVER ELECTROLESS Ni PLATING 2μm MIN.



PCB PATTERN LAYOUT



MODULE LAYOUT(MATING PART ONLY)

A1,B17,B31,B48,B81	89	72.15	73.15	70	164	16
A1,B17,B31,B48	56	39.15	40.15	37	98	8
A1,B17,B31	39	22.15	23.15	20	64	4
A1,B17	25	8.15	9.15	6	36	1
PRSNT PIN	G	F	E	N	POS.	PORT

THIS DRAWING IS A CONTROLLED DOCUMENT.

DIMENSIONS: MM	TOLERANCES UNLESS OTHERWISE SPECIFIED: 0-PLG ± ±0.13 1-PLG ± ±1 2-PLG ± ± 3-PLG ± ± 4-PLG ± ± ANGLES ± ± FINISH	DWN CHK APVD PRODUCT SPEC APPLICATION SPEC WEIGHT CUSTOMER DRAWING	Tyco Electronics Corporation Taipei, Taiwan NAME PCI EXPRESS CARD EDGE CONN. V-TYPE SIZE A3 CAGE CODE 00779 DRAWING NO. 1612163 RESTRICTED TO
		SCALE 5:1 SHEET 2 OF 2 REV K	