

High Performance RFI Filters for Switching Power Supplies

G Series



UL Recognized
CSA Certified
VDE Approved



G Series

The G series RFI filters are designed to provide excellent common-mode and differential-mode attenuation for most digital electronic equipment (particularly switching power supplies) over the frequency range of 20kHz to 30MHz.

These filters are a size- and cost-effective solution for equipment that must meet the conducted emission limits of EN55022 Level A requirements, as well as FCC Part 15J, Class B.

The EG models also meet the very low leakage current requirements for VDE portable equipment as well as (120 volt) UL 544 non-patient medical equipment.

Specifications

Maximum leakage current, each line-to-ground	EG Models	VG Models	
	@ 120 VAC 60 Hz:	.30 mA	1.2 mA
	@ 250 VAC 50 Hz:	.50 mA	2.0 mA
Hipot rating (one minute):	line-to-ground	2250 VDC	
	line-to-line	1450 VDC	
Operating frequency:	50/60 Hz		
Rated voltage (max.):	250 VAC		
Rated current:	6EG1/6VG1	6A	
	10EG1/10VG1	10A	

Minimum insertion loss in dB:

Line-to-ground in 50 ohm circuit

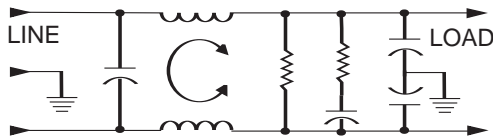
Current Rating	Frequency-MHz									
	.01	.05	.07	.1	.15	.5	1	5	10	30
EG1										
6A	6	19	23	25	29	48	44	43	40	40
10A	8	10	15	18	42	64	65	65	60	60
VG1										
6A	4	18	21	25	30	56	55	53	45	45
10A	5	10	24	37	50	72	70	70	60	60

Line-to-line in 50 ohm circuit

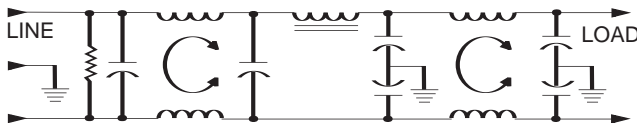
Current Rating	Frequency-MHz									
	.01	.05	.07	.1	.15	.5	1	5	10	30
EG1										
6A	4	6	10	24	37	66	75	72	50	50
10A	5	5	5	26	40	65	65	60	70	70
VG1										
6A	4	7	7	26	39	67	75	68	55	55
10A	5	5	7	26	39	65	60	60	70	70

Electrical Schematics

6EG & 6VG Models



10EG & 10VG Models

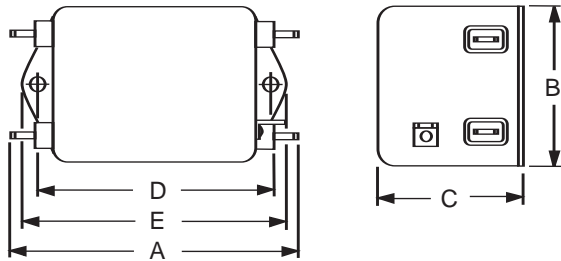


Resistor location for reference only.

G Series

Case Style

EG1 & VG1



Typical dimensions:

Terminals: .250 [6.35] (5) Holes: .07 [1.8] Dia.(4) Slot: .07 x .16 [1.8 x 4.1]
Mounting holes: .188 [4.78] Dia. (2)

Case Dimensions

Part No.	A (max)	B (max)	C (max)	D $\frac{\pm .015}{\pm .38}$	E (max)
6EG1/VG1	3.56 <i>90.4</i>	2.15 <i>54.6</i>	1.56 <i>39.6</i>	2.938 <i>74.63</i>	3.38 <i>85.8</i>
10EG1/VG1	4.69 <i>119.1</i>	2.27 <i>57.7</i>	1.8 <i>45.7</i>	4.063 <i>103.2</i>	4.47 <i>113.5</i>

Part Numbers

6EG1 10EG1	6VG1 10VG1
---------------	---------------