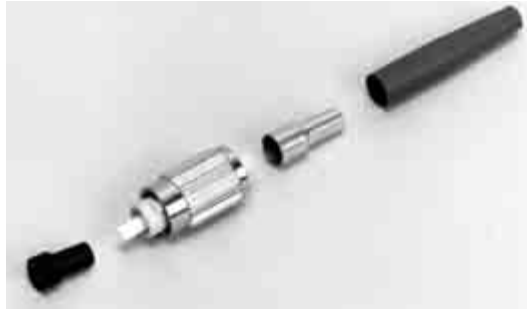


FC Connectors

Product Facts

- One-piece connector body:
 - Fastest assembly
- Compliant with:
 - JIS C-5970
- Pre-radiused ferrule

Instruction Sheet — 408-8674
<http://www.tycoelectronics.com/documents>



Singlemode FC Connector Kits - Polymer Crimp Body

Performance Characteristics

Insertion Loss — <0.2 dB Typical
Return Loss — <-59 dB Typical
Durability — 200 Cycles

Singlemode FC Connector Kits — Polymer Crimp Body

| Boot Color | Used With | Individual Pack Part Number | Bulk Pack Part Number | Crimp Tool |
|------------|-----------------|-----------------------------|-----------------------|------------|
| Blue | 3.0 mm Jacketed | 5504649-1 | 5504649-8 | 503911-1 |
| | 2.4 mm Jacketed | 5504914-2 | — | 492026-1 |
| | 2.0 mm Jacketed | 5504915-2 | — | 492026-1 |
| | 900 µm Buffer | — | 5492052-5 | N/A |

GR-326 Style FC Connector Kits - Metal Crimp Body Singlemode

Performance Characteristics

Insertion Loss — <0.2 dB Typical
Return Loss — <-59 dB Typical
Tested to GR-326
Tuning — 6 position

GR-326 Style Singlemode FC Connector Kits — Metal Crimp Body

| Boot Color | Used With | Individual Pack Part Number | Bulk Pack Part Number | Crimp Tool |
|------------|-----------------|-----------------------------|-----------------------|-----------------------------|
| Blue | 3.0 mm Jacketed | 4-1918962-2 | — | (1) 492131-1 (1) 58532-1 |
| | 2.4 mm Jacketed | 6754264-5 | 6754264-6 | 1588176-1 |
| | 2.0 mm Jacketed | 6754264-4 | 6754264-7 | 1588176-1 |
| | 900 µm Buffer | 6754264-2 | — | 1588176-1 |



3.0 mm - GR-326 Style



3.0 mm Angled



900 µm Short



900 µm



GR-326 Style 900 µm

FC Strain Reliefs — Jacketed Cable

| Description | GR-326 Style | Part Number | | | |
|-----------------|--------------|-------------|-------------|-----------|-----------|
| | | Color | | | |
| | | Black | Red | Beige | Blue |
| 3.0 mm | No | 1-5503971-0 | 1-5503971-1 | 5503971-1 | 5503971-2 |
| 2.4 mm | No | 1-5503971-2 | 1-5503971-3 | 5503971-3 | 5503971-4 |
| 2.0 mm | No | 2-5503971-3 | 2-5503971-7 | 5503971-5 | 5503971-6 |
| 3.0 mm | Yes | — | — | — | 1588491-2 |
| 1.6 mm - 2.4 mm | Yes | 1588153-3 | — | 1588153-5 | 1588153-2 |

FC Strain Reliefs — Angled

| Description | | Part Number | | |
|-------------|-------------|-------------|-----------|-----------|
| | | Color | | |
| | | Black | Beige | Blue |
| 3.0 mm | Simplex | 1278705-3 | 1278705-2 | 1278705-1 |
| 2.0 mm | Simplex | 1374737-3 | 1374737-2 | 1374737-1 |
| 2.0 mm | 45° Simplex | 6457543-4 | 6457543-1 | 6457543-2 |

FC Strain Reliefs — 900 micron

| Description | | Part Number | | |
|----------------------|--|-------------|-----------|-----------|
| | | Color | | |
| | | Black | Beige | Blue |
| Long (33 mm) 900 µm | | 6457493-3 | 6457493-9 | 6457493-1 |
| Short (10 mm) 900 µm | | 6278309-1 | — | 6278309-2 |
| GR-326 Style 900 µm | | 1828184-2 | 1828184-4 | 1828184-1 |

Note: All part numbers are RoHS compliant.

FC Connectors (Continued)

FC Connector Component Selection Chart (bulk packaged)

| Fiber Type | Simplex Connector Sub-Assembly | Cable Size | Crimp Eyelet w/ Heat Shrink | Crimp Eyelet | Strain Relief Part Number* |
|-------------------------------|--------------------------------|------------|-----------------------------|--------------|---------------------------------------|
| Singlemode - GR-326 Style | 6754264-8 | 1.6-2.0 mm | 6374150-1 | — | 1588153-X |
| | | 2.4 mm | 6588189-1 | — | 1588153-X |
| | 6457216-5 | 3.0 mm | — | 504973-3 | 1588491-X |
| Singlemode Polymer Crimp Body | 5504649-9 | 2.4 mm | — | 503970-6 | 5503971-X |
| | | 3.0 mm | — | 503970-3 | 5503971-X |
| | | 900 µm | — | — | 6457493-X (long) 6278309-X (short) |
| Multimode - Ceramic Ferrule | 6374778-2 | 1.6-2.0 mm | 6374150-1 | — | 1588153-X |
| | | 2.4 mm | 6588189-1 | — | 1588153-X |
| | 5504922-3 | 3.0 mm | — | 503970-3 | 5503971-2 |
| | | 900 µm | — | — | 6457493-9 (long) 6278309-1 (short) |

* Strain relief dash number indicates color - see page 64 for details.

FC Adapters



FC Square Flange Adapter

FC Simplex Square Flange Adapter - Metal

| Alignment Sleeve Material | Panel Cut-out | Keyway Slot (Nom.) | Part Numbers |
|---------------------------|---------------|--------------------|--------------|
| Metal | Square Flange | Std. 2.33 mm | 5501506-2 |
| Ceramic | Square Flange | Std. 2.33 mm | 5501506-1 |



FC 8 mm/9 mm Dia. Round

FC Simplex 8 mm/9 mm Dia. Round (D-Hole) Adapter - Metal

| Alignment Sleeve Material | Panel Cut-out | Keyway Slot (Nom.) | Part Numbers |
|---------------------------|---------------|--------------------|--------------|
| Metal (Copper) | D-Hole | Std. 2.33 mm | 5504407-1 |
| Ceramic | D-Hole | Std. 2.33 mm | 5504407-3 |
| Ceramic/APC | D-Hole | 2.05 mm Type R | 5504407-8 |
| Ceramic/APC | D-Hole | Prec. 2.02 mm | 5504407-7 |



FC 8 mm Dia. Round (Double D)

FC Simplex 8 mm Dia. Round (Double D-Hole) Adapter - Metal

| Alignment Sleeve Material | Panel Cut-out | Keyway Slot (Nom.) | Part Numbers |
|---------------------------|---------------|--------------------|--------------|
| Metal | Double D-Hole | Std. 2.33 mm | 5504013-1 |

Note: All part numbers are RoHS compliant.

FC Connectors (Continued)

Hybrid Adapters - SC/FC/ST



FC to ST Simplex Adapter - Metal

Hybrid FC to ST Simplex Adapter - Metal

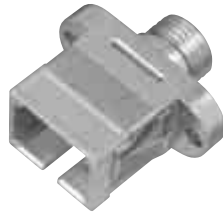
| Alignment Sleeve Material | Housing Color | Part Numbers |
|---------------------------|--------------------|--------------|
| Metal | Electroless Nickel | 5503640-1 |
| Ceramic | Electroless Nickel | 5503640-2 |



SC to FC Simplex Adapter - Plastic

SC to FC Simplex Adapter - Plastic

| Alignment Sleeve Material | Housing Color | Part Numbers |
|---------------------------|---------------|--------------|
| Metal | Black | 5502871-1 |
| Ceramic | Blue | 5502871-4 |



SC to FC Simplex Adapter - Metal

SC to FC Simplex Adapter - Metal

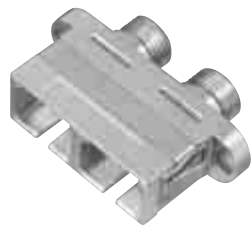
| Alignment Sleeve Material | Housing Color | Part Numbers |
|---------------------------|--------------------|--------------|
| Metal | Electroless Nickel | 6278349-1 |
| Ceramic | Electroless Nickel | 6278349-3 |



Flangeless SC to FC Simplex Adapter - Metal

Flangeless Simplex Adapter - Metal

| Alignment Sleeve Material | Housing Color | Part Numbers |
|---------------------------|--------------------|--------------|
| Metal | Electroless Nickel | 6278349-5 |
| Ceramic | Electroless Nickel | 6278349-7 |



SC to FC Duplex Adapter - Metal

SC to FC Duplex Adapter - Metal

| Alignment Sleeve Material | Housing Color | Part Numbers |
|---------------------------|--------------------|--------------|
| Metal | Electroless Nickel | 6278050-1 |
| Ceramic | Electroless Nickel | 6278050-3 |

Note: All part numbers are RoHS compliant.