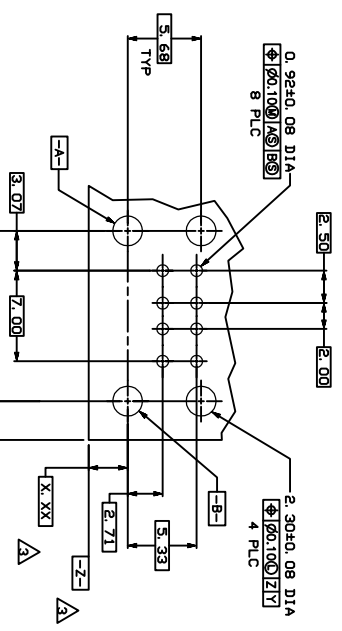
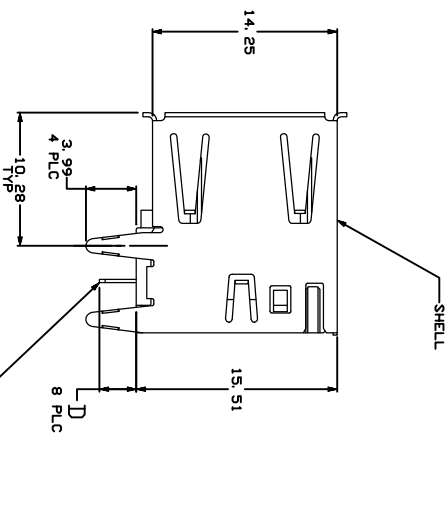
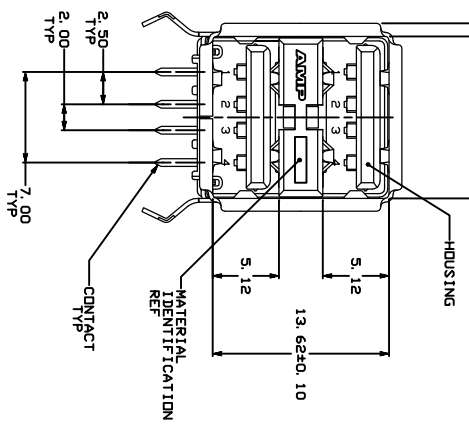


- △ MATERIAL - SHELL & CONTACTS - COPPER ALLOY.
- △ SHELL & CONTACTS - COPPER ALLOY.
- △ SHELL - UL 94V-0 RATED, THERMOPLASTIC. SEE TABLE.
- △ PLATING:
  - △ CONTACTS - 0.076um MINIMUM GOLD OVER 0.76um MINIMUM PALLADIUM-NICKEL ON MATING AREA. DR CONTACT ALTERNATE PLATING 0.76um MINIMUM GOLD ON MATING AREA.
  - △ 3.80um MINIMUM MATTE TIN ON SOLDER TAILS.
  - △ BOTH OVER 1.27um MINIMUM NICKEL.
  - △ SHELL - 2-5um MINIMUM BRIGHT TIN.
- △ DATUM AND BASIC DIMENSIONS ESTABLISHED BY CUSTOMER.
- △ RECOMMENDED PC BOARD THICKNESS OF 1.57.
- △ PLATING:
  - △ CONTACTS - 0.127um MINIMUM GOLD ON MATING AREA.
  - △ 3.80um MINIMUM MATTE TIN ON SOLDER TAILS.
  - △ ALL OVER .76um MINIMUM NICKEL ON ENTIRE CONTACT.
  - △ SHELL - 2-5um MINIMUM BRIGHT TIN.
- △ PACKAGED IN TRAYS

1. 065±0.065  
 4 PLC



RECOMMENDED PC BOARD  
 MOUNTING DIMENSIONS

PLATING	HIGH TEMPERATURE COMPATIBLE	D	HOUSING HOLDER	PART NUMBER
△	△	△	△	5787617-8
△	△	△	△	5787617-7
△	△	△	△	5787617-6
△	△	△	△	5787617-5
△	△	△	△	5787617-4
△	△	△	△	5787617-3
△	△	△	△	5787617-2
△	△	△	△	5787617-1

THIS DRAWING IS A CONTROLLED DOCUMENT

REVISIONS	ES 00	REVISED PER ESR-08-010983
DATE	1993	
BY		
CHKD		
APP'D		
DESIGNED BY		
DRAWN BY		
CHECKED BY		
DATE	1993	
BY		
CHKD		
APP'D		

SEE CHART CUSTOMER DRAWING