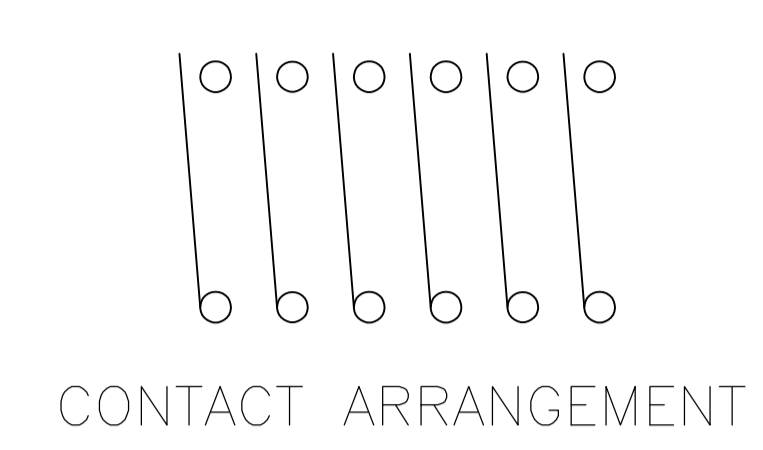
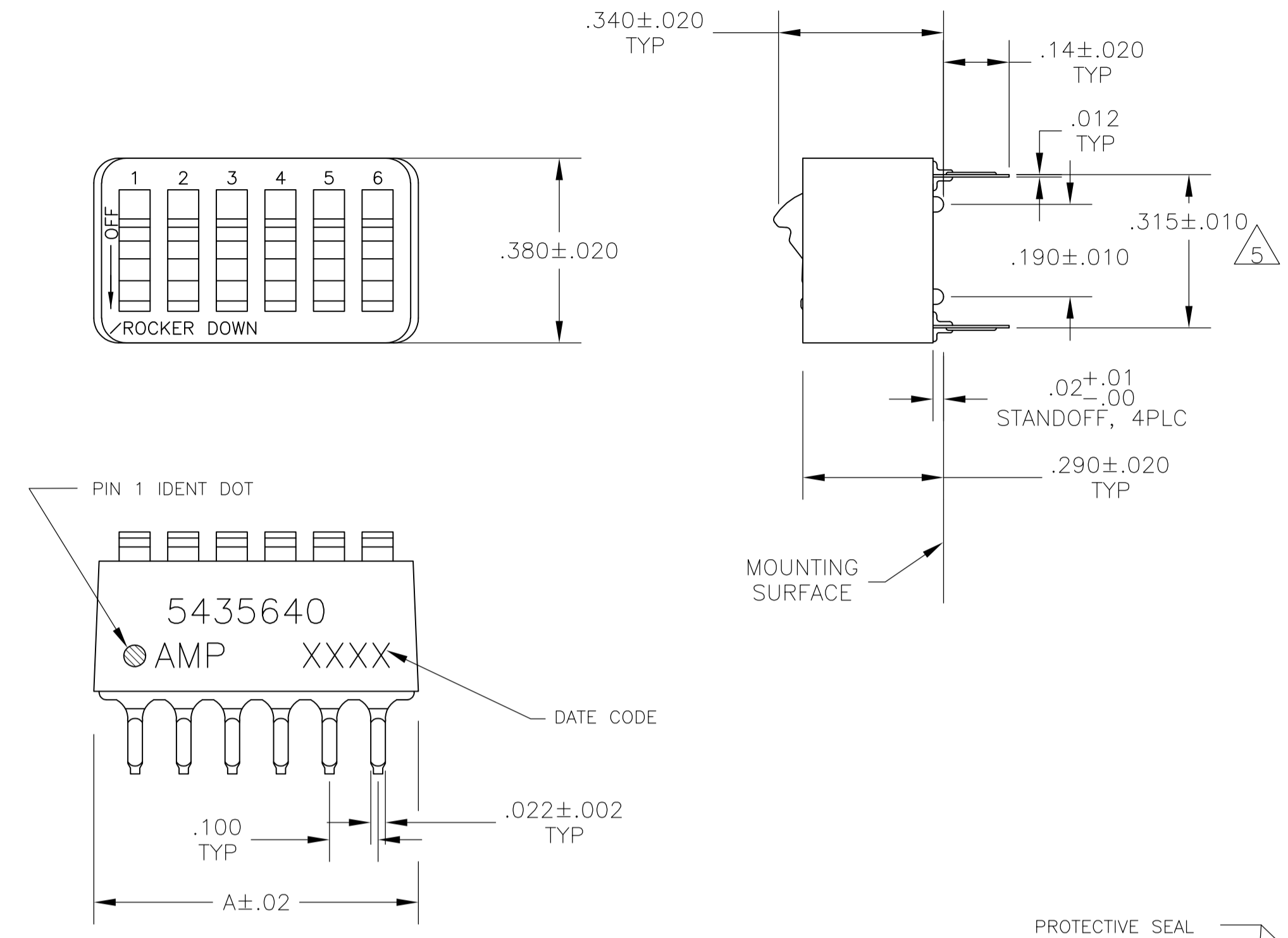


LOC		DIST		REVISIONS			
P	LTR	DESCRIPTION	DATE	DWN	APVD		
B		REVISED PER ECO-08-006299	27MAR08	HMR	MS		



- FOR ADDITIONAL SPECIFICATIONS SEE AMP PRODUCT SPEC 108-7532.
- SWITCH SHOWN IN OPEN POSITION.
- ALL CHARACTERS AND ROCKERS ARE WHITE, HOUSING IS BLUE.
- STAMPING WILL VARY ON 2 AND 3 POSITION SIDES DUE TO SPACE RESTRICTIONS.
- .315 DIMENSION APPLIES AT TERMINAL TIPS. TERMINALS ARE .300+.010 -.000 AT MOUNTING SURFACE.
- STRIPPABLE TRANSPARENT SEAL, SEE FIG 1.
- STRIPPABLE TRANSPARENT SEAL, SEE FIG 1.
- MATERIAL: HOUSING & ROCKERS- POLYESTER  
CONTACTS & SOLDER LEAD-COPPER ALLOY
- FINISH: CONTACTS- GOLD OVER NICKEL  
SOLDER LEAD- TIN OVER NICKEL
- ALL MATERIALS AND FINISHES SHALL COMPLY WITH EU DIRECTIVE 2002 /95/EC OF 27JAN2003(ROHS).

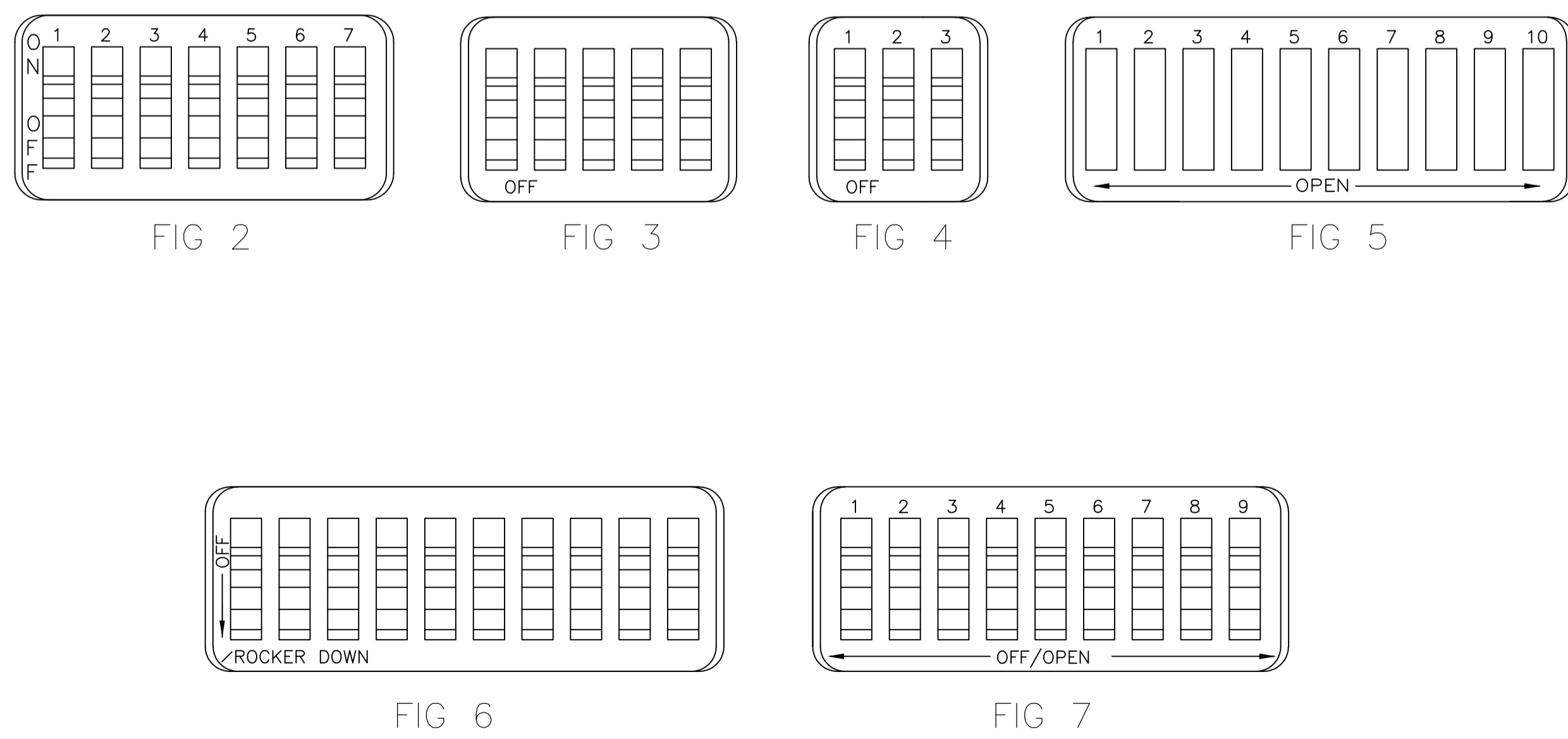
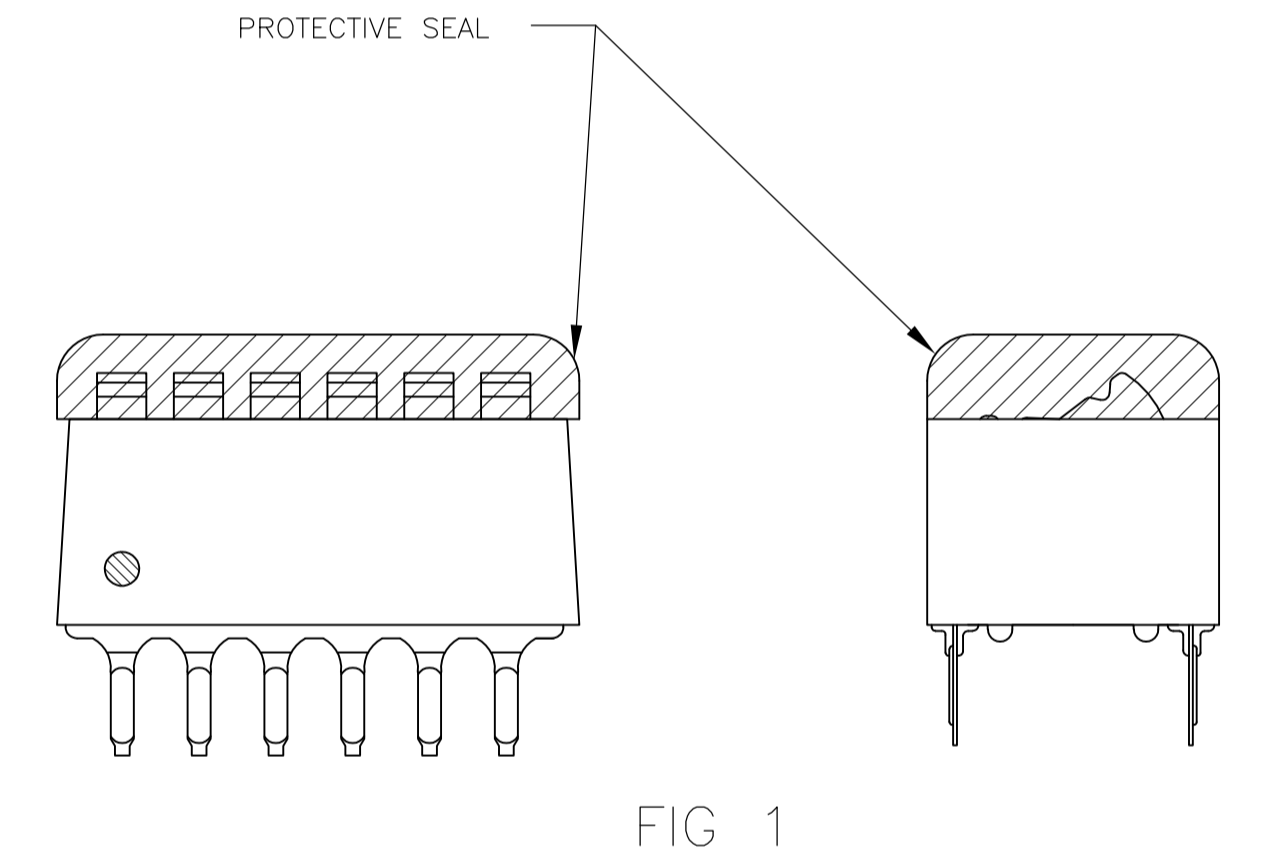


FIG	INCHES	NO OF POSN	PART NO.
FIG 6	1.08	10	6-5435640-1
FIG 7	.58	5	6-5435640-0
	.48	4	5-5435640-9
	.88	8	5-5435640-8
FIG 5	.98	9	5-5435640-7
	.68	6	5-5435640-6
	.58	5	5-5435640-5
FIG 2	.48	4	5-5435640-4
	.88	8	5-5435640-3
FIG 5	1.08	10	5-5435640-1
	.88	8	5-5435640-0
	.88	8	4-5435640-9
FIG 3	.58	5	4-5435640-8
	1.08	10	4-5435640-7
	.88	8	4-5435640-6
AS SHOWN	.98	9	4-5435640-0
	.88	8	3-5435640-9
	.78	7	3-5435640-8
	.68	6	3-5435640-7
	.58	5	3-5435640-6
	.48	4	3-5435640-5
	1.28	12	3-5435640-2
	.38	3	3-5435640-0
	.28	2	2-5435640-9
	AS SHOWN	1.08	10
.98		9	5435640-6
.88		8	5435640-5
.68		6	5435640-4
.58		5	5435640-3
.48		4	5435640-2
AS SHOWN	.78	7	5435640-1
	1.08	10	5435640-0

THIS DRAWING IS A CONTROLLED DOCUMENT.

DIMENSIONS: INCHES	TOLERANCES UNLESS OTHERWISE SPECIFIED:	0 PLC ± -	1 PLC ± -	2 PLC ± -	3 PLC ± .005	4 PLC ± -	ANGLES ± -
MATERIAL: SEE NOTES	FINISH: SEE NOTES	WEIGHT: -	SIZE: A1	CAGE CODE: 00779	DRAWING NO: 5435640	RESTRICTED TO: -	

CUSTOMER DRAWING SCALE 4:1 SHEET 1 OF 1 REV B

THIS DRAWING IS A CONTROLLED DOCUMENT. BSN 08JAN2005 CJK 13SEP05 M SARVER 13SEP05 NAME: SWITCH ASSY, DIP, TYPE C, 7100 SERIES, SPST, STANDARD

Tyco Electronics Corporation Harrisburg, PA 17105-3608