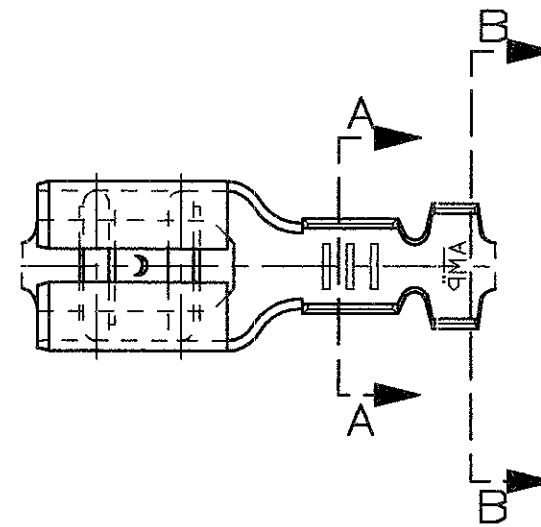
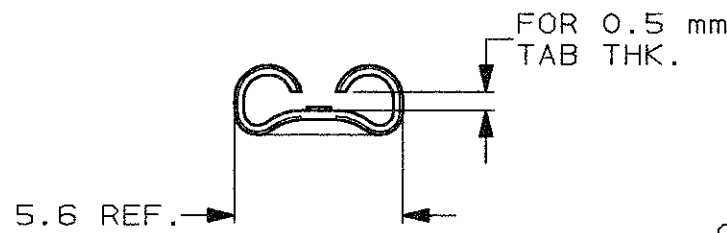
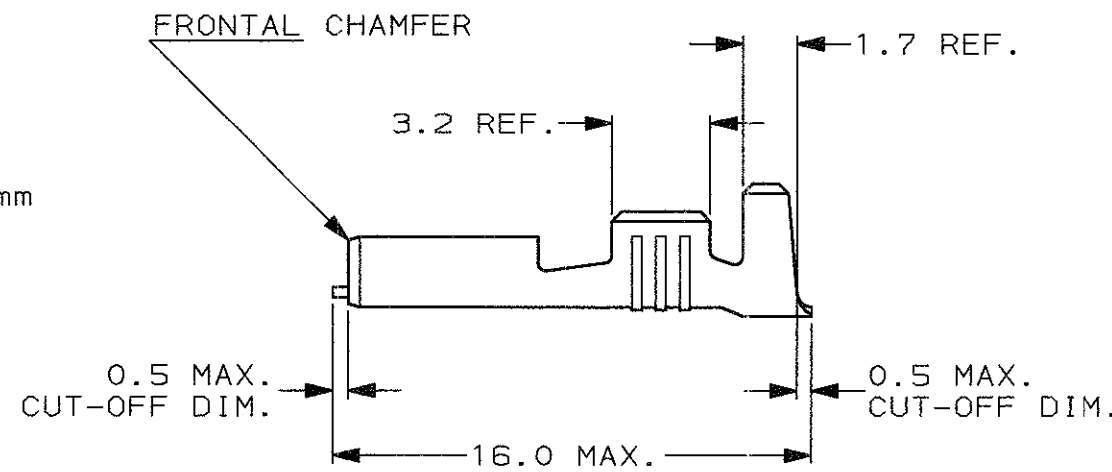


SCALA NON IMPEGNATIVA
(DO NOT SCALE)
DIMENSIONI IN mm
(DIMENSIONS IN IN)

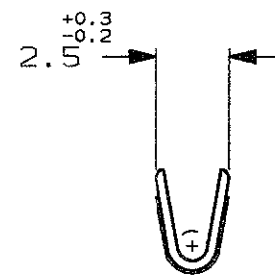
METRIC



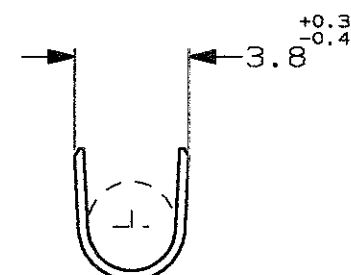
- 1) PER PEZZI IN NASTRO
VEDERE DISEGNO 160433
(FOR STRIP VERSION SEE DWG. 160433).
 - 2) CONFEZIONAMENTO IN ACCORDO ALLA
SPECIFICA AMP 107-20201.
(PACKAGING ACCORDING TO AMP SPEC. 107-20201)
- 3** OBSOLETE PARTS: OBSOLETE CIS STREAMLINING
PER D.RENAUD/D.SINISI



SEZIONE A-A
(SECTION A-A)



SEZIONE B-B
(SECTION B-B)



OBSOLETE 3	STAGNATO (TIN PLATED)	BRONZO FOSF. (PHOS. BRONZE)	5-160493-8	J
	PRE NICHELATO (PRE-NICKEL PL.)	ACCIAIO (STEEL)	5-160493-4	J
	STAGNATO (TIN PLATED)	OTTONE (BRASS)	5-160493-2	J
	NUDO (PLAIN)	OTTONE (BRASS)	5-160493-1	J
	FINITURA / COLORE (FINISH / COLOUR)	MATERIALE (MATERIAL)	NUMERO (AMP P/N)	REV

CUSTOMER DWG. FOR REFERENCE ONLY DISEGNO PER CLIENTE SOLO PER RIFERIMENTO

THIS DRAWING IS UNPUBLISHED RELEASE FOR PUBLICATION 19

© COPYRIGHT 19 BY AMP INCORPORATED, HARRISBURG, PA. ALL INTERNATIONAL RIGHT RESERVED. AMP PRODUCTS MAY BE COVERED BY U.S. AND FOREIGN PATENT AND/OR PATENT PENDING

TOLLERANZE, SE NON DIVERSAMENTE SPECIFICATO (TOLERANCES, UNLESS OTHERWISE SPECIFIED)	DIAM. ISOLANTE (INS. DIA. RANGE)	RANGO FILO (WIRE RANGE)	SCALA (SCALE)
± 0.3	2.3-3.3	0.5-1.5	4:1

ANGOLI (ANGLES) ± 2°

AMP AMP ITALIA S.p.A.
Corso F.lli Cervi, 15
COLLEGNO (TORINO)

J1	REVISED PER ECO-09-022178	KK	28SEP 09
J	FIRST EMISSION ET00-0198-01	CH. Y.	27 JUL 2001
REV.	REVISIONI (REVISION RECORD)	DIS. DATA (DR) (DATE)	APP. (APP.)

DESCRIZIONE (DESCRIPTION) FASTON Connector, .187" sr. REC. CONTACT (LOOSE PIECE VERSION)

LOC. (LOC.)	SIZE (SIZE)	NUMERO (DWG NO)	REV.	FOGLIO (SHEET)
I	A3	C-160493	J1	1 DI (OF) 1

DISTRIBUZIONE (PRINT DIST.)