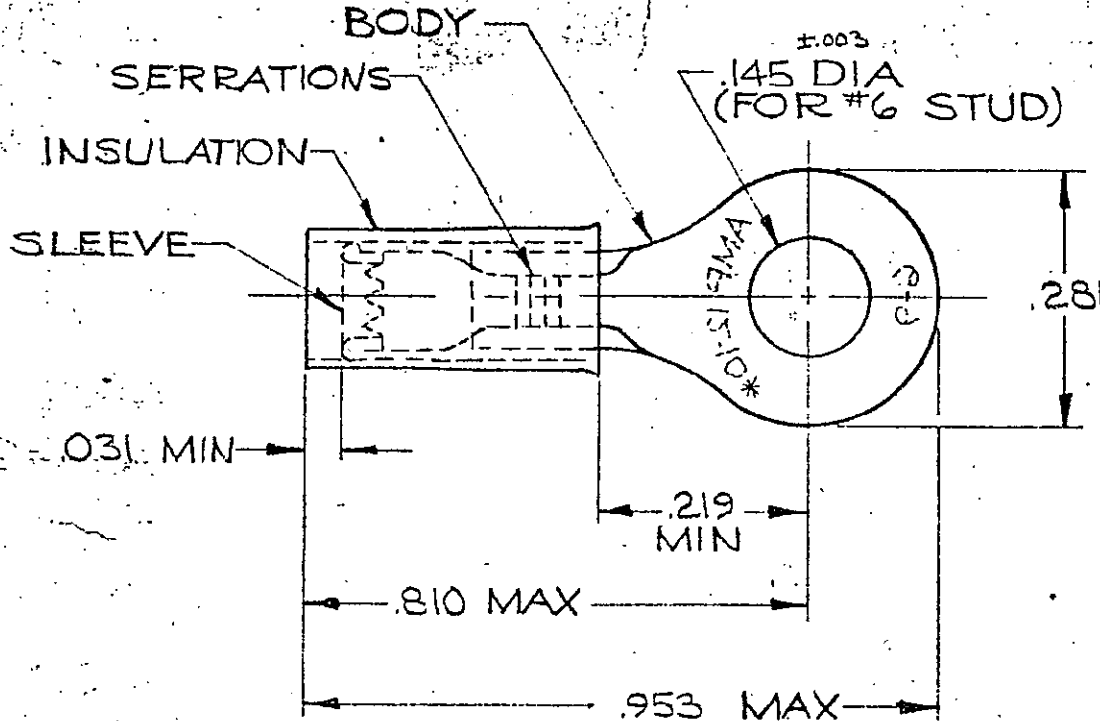


DRAWING MADE IN AMERICAN PROJECTION

LOC G PRINT DIST 141

© 1951 BY AMP INCORPORATED. ALL RIGHTS RESERVED. AMP PRODUCTS COVERED BY PATENTS AND/OR PATENTS PENDING.

REVISIONS			
LTR	DESCRIPTION	DATE	APPROVED
B	REDRAWN, REV. 4 ADDED TAPE NO. P-6080 WM	4-20-70	FZY
C	REV PER G-4732	JT 7/26/88	<i>[Signature]</i>
D	REV./ 0720-10036-93	TQ 3-5-93	<i>[Signature]</i>
E	REV/ 0620-0273-97	TM 1-12-98	ME



FOR .150" TO .250 WIRE INSULATION DIA.
TONGUE MATERIAL THK. = .040 ±.002

50	LD05E PC. BOX	8-35149-2	
1	35149 ON TAPE	2-35149-1	BODY: COPPER (ASTM B.152) TIN PL (ASTM B545)
1	WIRE TERMINAL	35149	SLEEVE: COPPER (ASTM B.152) INSULATION: YELLOW NYLON
QTY	DESCRIPTION	PART NO.	MATERIAL & FINISH

UNLESS OTHERWISE SPECIFIED DIMENSIONS ARE IN INCHES TOLERANCES ON: DECIMALS ±.008 ANGLES ± 5°	CONTRACT NO. #		AMP	AMP INCORPORATED HARRISBURG, PENNSYLVANIA		
	DR. <i>W. J. Milburn</i> 4-17-70	CHK. <i>[Signature]</i> 4-20-70		NAME		
	MATERIAL	APPD. <i>[Signature]</i> 4-20-70	WIRE TERMINAL P. I. D. G-RING TONGUE WIRE SIZE: 12-10			
	SEE TABLE	REL. <i>[Signature]</i> 4-21-70	DSGN APPD. <i>[Signature]</i>	SIZE A	CODE IDENT NO. 00779	NUMBER 35149
OTHER APPD.			SCALE NTS	SHEET 1 OF 1		