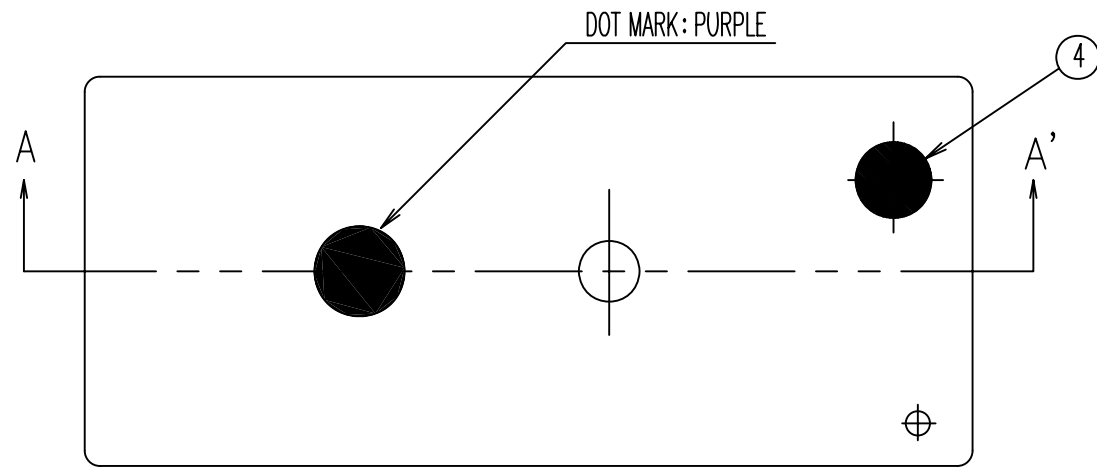
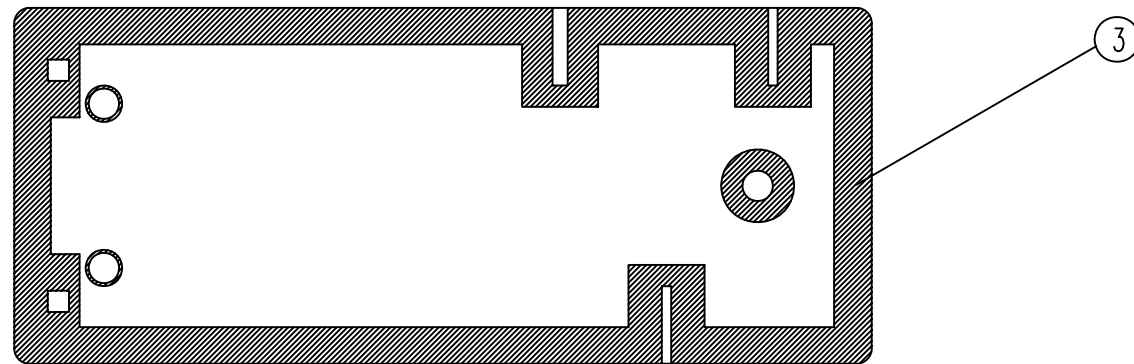
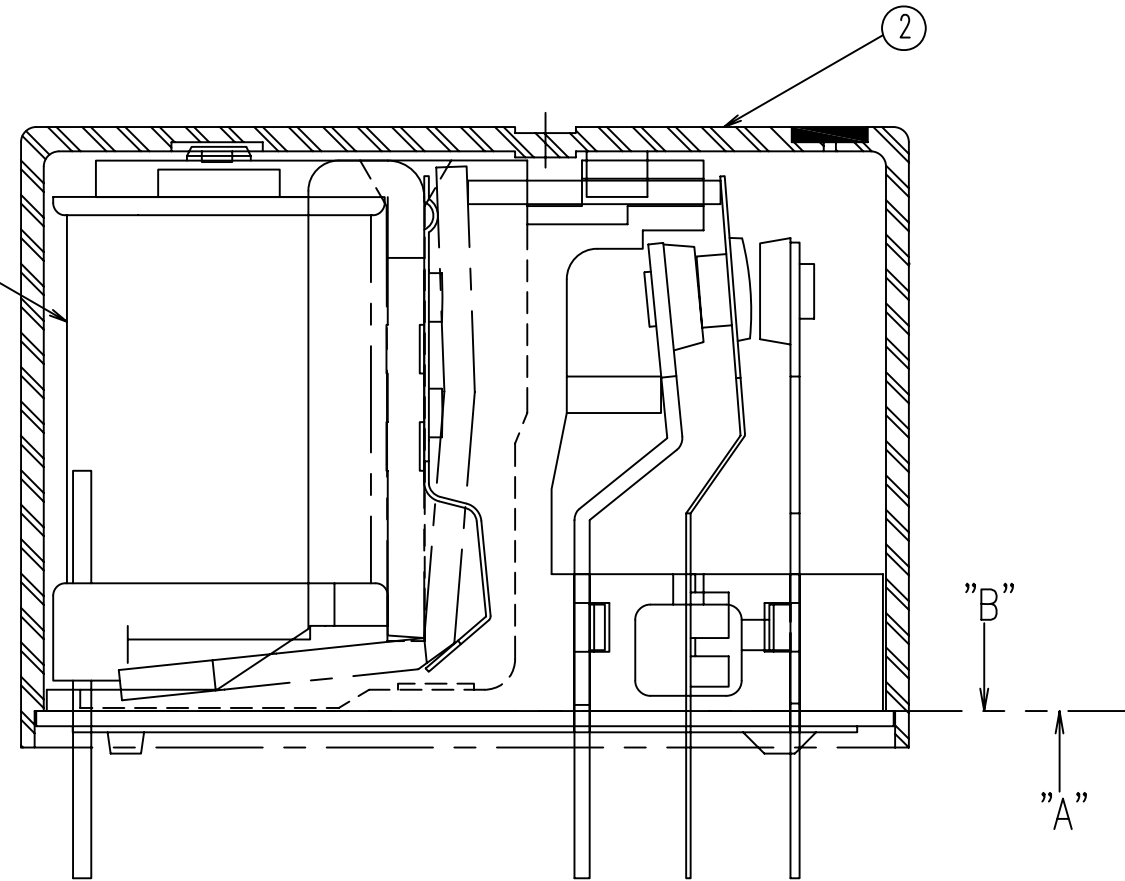
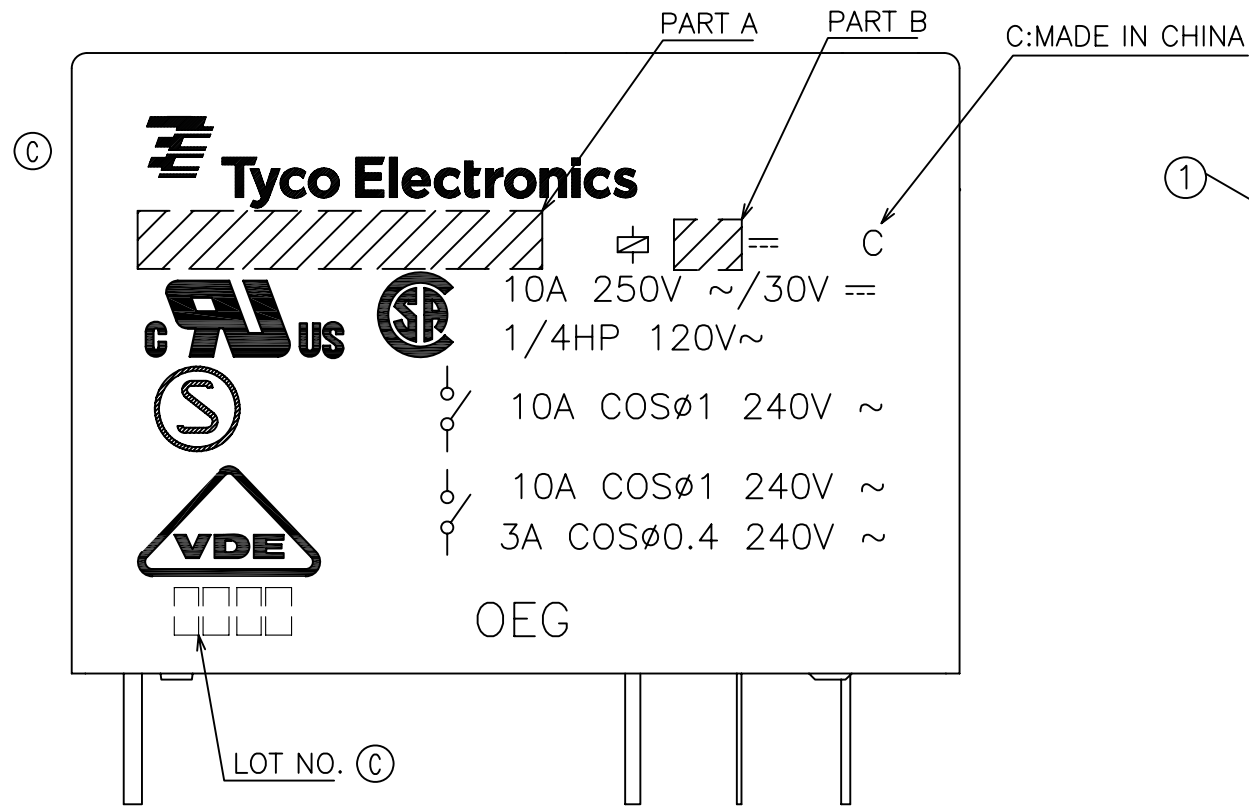


USED ON



NOTE.  
1.PART "B" SHOULD FIT PART "A" AFTER CASE INSERTION PROCESS

A-A' SECTION



C	CHANGE NEW LOGO	ECO-08-019312	27-NOV-08	D.L	BH.Y
B1	ADD TYPE	ECO-06-017496	2-AUG-06	G.L	N.F
A1	MODIFY	FK00-0069-04	31-MAY-04	H.S	A.N
P	LTR	REVISION RECORD	ECN	DATE	DWN APVD

DIMENSIONS: mm		TOLERANCES UNLESS OTHERWISE SPECIFIED:	
		0 PLC	±
		1 PLC	±
		2 PLC	±
		3 PLC	±
		4 PLC	±
ANGLES ±		SURFACE TEXTURE	
		✓	

DWN H.Sasaki	MATERIAL	HEAT TREAT
CHK Y.Oikawa	Tyco Electronics Corporation Shenzhen, China	
APVD A.Nagai		
NAME OMI-SH-112D SPEC,394 PRODUCT DRAWING		
SCALE 4:1	SIZE A3	DRAWING NO 3-1440000-8
SHEET 1 OF 2		REV C

THIS INFORMATION IS CONFIDENTIAL AND PROPRIETARY TO TYCO ELECTRONICS CORPORATION AND ITS WORLDWIDE SUBSIDIARIES AND AFFILIATES. IT MAY NOT BE DISCLOSED TO ANYONE OTHER THAN TYCO ELECTRONICS PERSONNEL WITHOUT WRITTEN AUTHORIZATION FROM TYCO ELECTRONICS CORPORATION, HARRISBURG, PENNSYLVANIA USA.

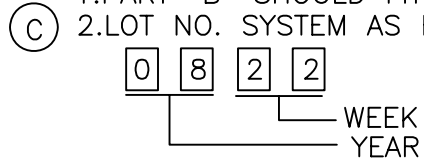
LOC HB  
DIST

USED ON

DWG NO 3-1440000-8

THIS DRAWING IS A CONTROLLED DOCUMENT

- NOTES:  
 1.PART "B" SHOULD FIT PART "A" AFTER CASE INSERTION PROCESS.  
 2.LOT NO. SYSTEM AS FOLLOWING:



1-1461330-5	OMI-SH-124D,394	OMI-SH-124D	24V	f
1461330-2	OMI-SH-148D,394	OMI-SH-148D	48V	e
1461330-1	OMI-SH-148L,394	OMI-SH-148L	48V	d
4-1440000-3	OMI-SH-124L,394	OMI-SH-124L	24V	c
4-1440000-0	OMI-SH-112L,394	OMI-SH-112L	12V	b
3-1440000-8	OMI-SH-112D,394	OMI-SH-112D	12V	a
TE PART NO	DESCRIPTION	PART A	PART B	No.

RELAY TYPE

(B1)

(B)

AR	AR	AR	AR	AR	AR	AR	AR	1-1440802-0	UV SEAL 3056C(VENT HOLE)	4
AR	AR	AR	AR	AR	AR	AR	AR	1-1440802-3	SEAL 4616-50K(BASE&CASE)	3
			1					2-1461438-0	CASE MARKING ASSY ( 48V,TYPE L)	
	1	1						1-1461438-9	CASE MARKING ASSY ( 48V,TYPE D)	
				1				1-1461438-8	CASE MARKING ASSY ( 24V,TYPE L)	
1								1-1461438-7	CASE MARKING ASSY ( 24V,TYPE D)	2
					1			1-1461438-6	CASE MARKING ASSY ( 12V,TYPE L)	
						1		1-1461438-5	CASE MARKING ASSY ( 12V,TYPE D)	
			1					4-1721100-6	COIL ASSY(48V,TYPE L)	
	1	1						4-1721100-4	COIL ASSY(48V,TYPE D)	
								4-1721100-2	COIL ASSY(36V,TYPE D)	
				1				4-1721100-0	COIL ASSY(24V,TYPE L)	
1								3-1721100-8	COIL ASSY(24V,TYPE D)	
					1			3-1721100-4	COIL ASSY(12V,TYPE L)	1
						1		3-1721100-3	COIL ASSY(12V,TYPE D)	
								3-1721100-2	COIL ASSY(9V,TYPE L)	
								3-1721100-0	COIL ASSY(6V,TYPE L)	
								2-1721100-9	COIL ASSY(6V,TYPE D)	
								2-1721100-8	COIL ASSY(5V,TYPE L)	
								2-1721100-7	COIL ASSY(5V,TYPE D)	
f	e	e	d	c	b	a		TE PART NO	DESCRIPTION	ITEM
REQUIRED PER ASSY										

THIS INFORMATION IS CONFIDENTIAL AND PROPRIETARY TO TYCO ELECTRONICS CORPORATION AND ITS WORLDWIDE SUBSIDIARIES AND AFFILIATES. IT MAY NOT BE DISCLOSED TO ANYONE OTHER THAN TYCO ELECTRONICS PERSONNEL, WITHOUT WRITTEN AUTHORIZATION FROM TYCO ELECTRONICS CORPORATION, HARRISBURG, PENNSYLVANIA USA.

LOC HB DIST

P	LTR	REVISION RECORD	ECN	DATE	DWN	APVD
---	-----	-----------------	-----	------	-----	------

DIMENSIONS: mm

TOLERANCES UNLESS OTHERWISE SPECIFIED:

0	PLC	±
1	PLC	±
2	PLC	±
3	PLC	±
4	PLC	±

ANGLES ±

SURFACE TEXTURE ✓

DWN	MATERIAL	HEAT TREAT
CHK	Tyco Electronics Corporation Shenzhen, China	
APVD		
NAME OMI-SH-112D SPEC,394 PRODUCT DRAWING		
SCALE 5:1	SIZE A3	DRAWING NO 3-1440000-8
SHEET 2 OF 2		REV C

8 | 7 | 6 | 5 | 4 | 3 | 2 | 1