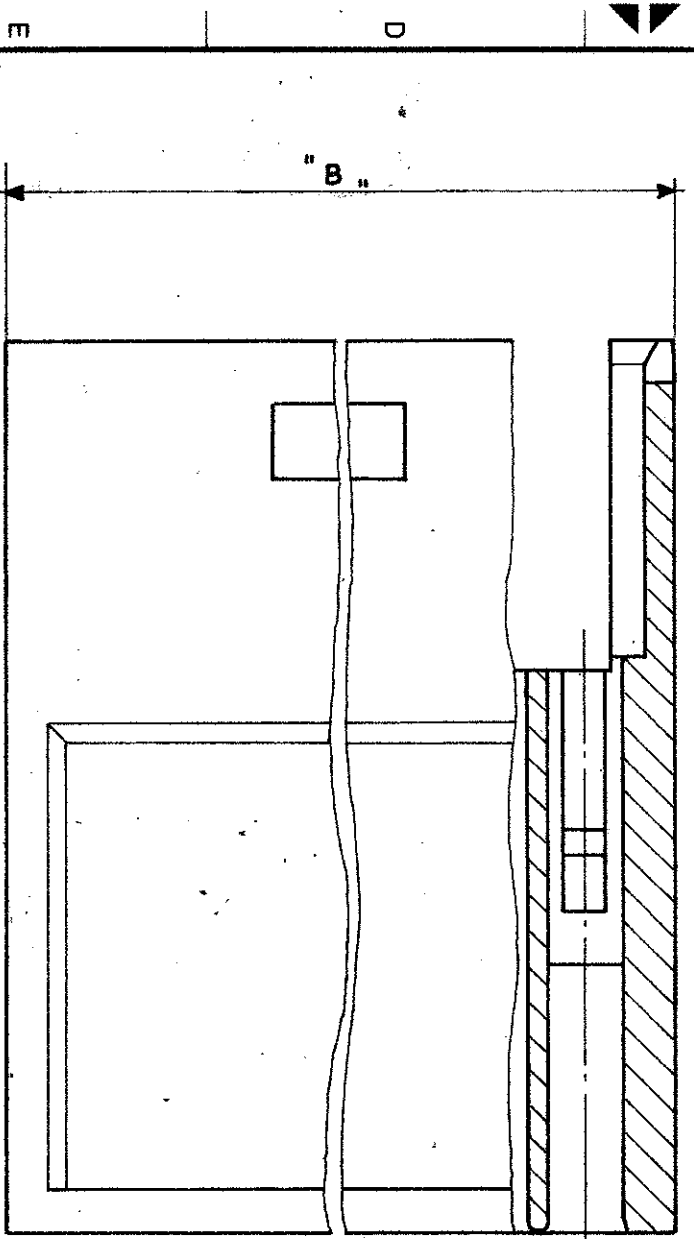
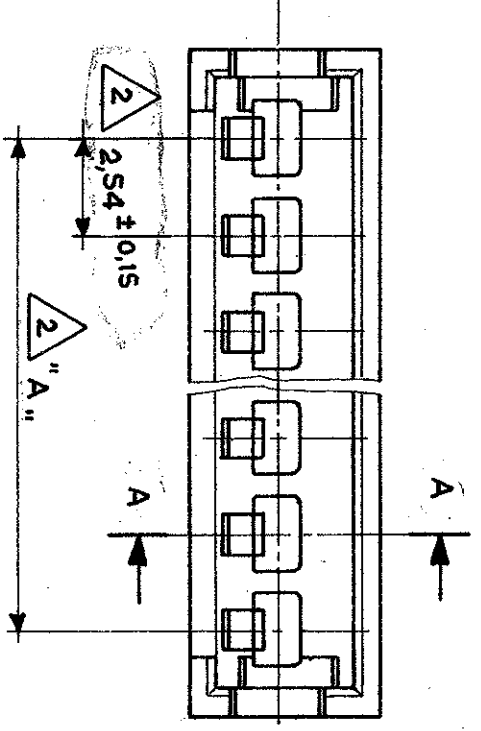
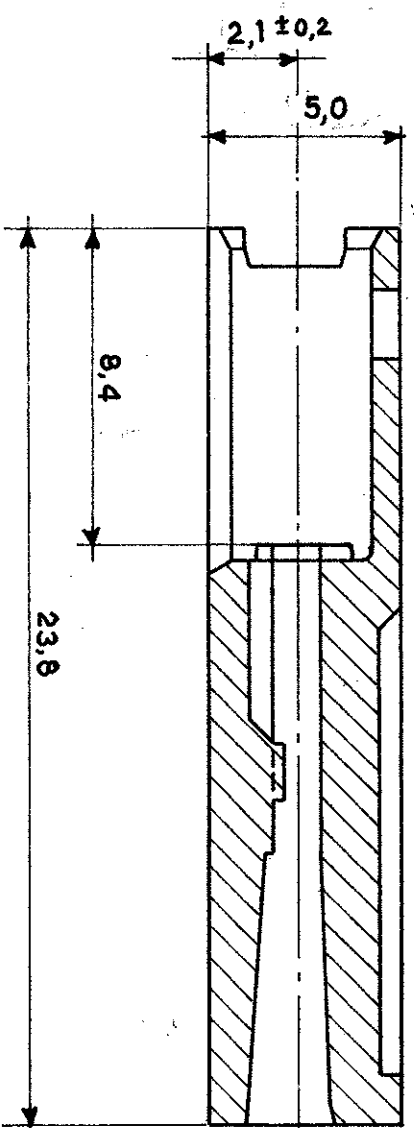


Sezione A-A
 (Section)



Note: (Notes)

- 1 Noryl (UL94-VI) colore Nero (Black colour).
- 2 Tolleranza non cumulativa. (Non-cumulative Tolerance.)
- 3 PA 6.6 45g.g.f. masterizzato Rosso (PA 6.6 45g.g.f. masterized - Red)
- 4 OBSOLETE PARTS: OBSOLETE CIS STREAMLINING PER D.RENAUD/D.SINISI

4 OBSOLETE
 OBSOLETE

N° Pos.	Part. Number	Dim. "A"	Dim. "B"	Mat.
4	284072-1	7,62	12,5	
2	284071-1	2,54	7,4	
22	280636	53,34	58,2	
15	280635	35,56	40,4	
12	280634	27,94	32,8	
10	280633	22,86	27,7	
9	280632	20,32	25,1	
8	280631	17,78	22,6	
6	280630	12,70	17,5	
4	280629	7,62	12,5	
2	280628	2,54	7,4	

REV.	REVISIONI (REVISION RECORD)	DIS. DATA (DR. DATE)	APP. (APP.)
1	Revised and redrawn	29.9.86	[Signature]
2	Revised note		
H1	Revised note		
H2	Revised note		
H3	REVISED PER ECO-10-000445		

CUSTOMER DWG. DISEGNO PER CLIENTE
FOR REFERENCE ONLY SOLO PER RIFERIMENTO

© COPYRIGHT 1986 BY AMP INCORPORATED, HARRISBURG, PA. ALL INTERNATIONAL RIGHTS RESERVED BY U.S. AND FOREIGN PATENT AND/OR PATENT PENDING.

RELEASE FOR PUBLICATION

AMP ITALIA S.p.A.
 Corso Filli Cervi, 15
 COLLEGGNO (TORINO)

DESCRIPTION: AMP MODU II Pin Housing,
 Single Row, Crimp Snap-In.

LOC. SIZE (DWG. NO.) I A3 C (Master Dwg.)

REV. (SHEET) H3 1 (OF) 1